

Historic, archived document

Do not assume content reflects current scientific knowledge, policies, or practices.

.... BOUNTIFUL RIDGE NURSERIES



Princess Anne
Maryland



LIBRARY
RECEIVED
MAR 12 1938
U. S. Department of Agriculture

YOUR GUIDE

to

Protected by Plant Patent No. 168
THE "COLORA" RED YORK **BETTER FRUITS**
AND MORE BEAUTIFUL HOMES FOR 1938

**GOLDEN JUBILEE
PEACH**



● During the 1937 Peach season **GOLDEN JUBILEE** proved its leadership as America's Greatest Early Freestone Peach. Bringing profits beyond expectation to growers throughout the U. S. and Canada. For full description see peach section.

THE NEW WONDER OF THE CHERRY WORLD



A
NOBLE
GIFT
OF
NATURE

—
See Full
Description
and Prices
in Cherry
Section.

U. S. PLANT PAT. NO. 94

New "Sweet September" Fall-Bearing Cherry

"ATTENTION"

We are one of America's foremost growers of dependable fruit trees and small berry plants. We offer you one of the most complete listings available. Follow our listings carefully throughout this catalogue, they mean greater consumer satisfaction and increased profits to you.



Bartlett Pear

A 5-POINT WINNER

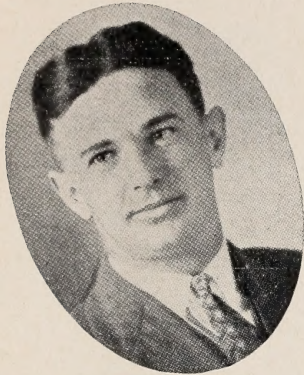
BEAUTY - QUALITY - ADAPTABILITY
PRODUCTIVE - DEPENDABLE

GALLIA BEAUTY—RED ROME

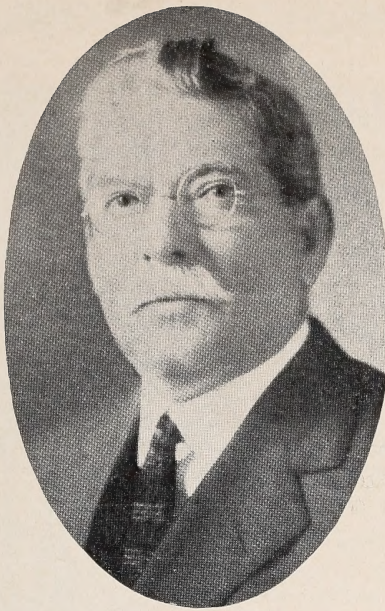
A glorified leader of the Red Rome type apple. One of the youngest bearing and heaviest producing varieties ever introduced. The pride of every grower and a money maker.

**We Personally Supervise
Every Department of
Our Nursery**

**Our Long Experience in
The Nursery Means Quality
Stock to You**



HOMER S. KEMP
Assistant Manager



GEO. W. KEMP
General Manager



EDGAR H. KEMP
Assistant Manager

Service and Dependability

Satisfying service and dependable merchandise are essential to the success of every business. Every purchaser is entitled to expect this and we are making every effort possible to improve our service and grow superior and dependable nursery stock for our patrons. For the past 9 years we have been supplying one of the larger mail order houses with nursery stock. Their volume has increased consistently each year and the conditions which they impose on their sources of supply have become so exacting that we felt they were interfering with the service we owed our customers, therefore, after due consideration we have severed our relations with them. This was done in the interest of better service to the many thousands of our customers who send their orders to us each year. You can realize the sacrifice we are making when you consider that last year we shipped more than 15,000 individual orders for this mail order house, most of which came from 4 states and we are confident you will approve our action for it will mean more personal attention to your orders, better stock and better service.

We are constantly trying to improve our stock and our service to our customers for we know this is essential to their satisfaction. Our propagating methods are the results of a lifetime experience in producing nursery stock, supplemented by the results of all known practical research and scientific work, to produce hardy, thrifty, healthy, disease resistant trees and plants. We do not hesitate in purchasing new equipment for the growing and digging of our stock if we can do the job better by having this new equipment. We bought the modern power digging equipment, you see illustrated in this catalog, in 1933 while other Nurseries are just now beginning to realize the advantages of this type digger. We have also purchased a new Sprayer designed for our special use to spray fruit trees of all sizes as they stand in the Nursery Rows as well as other types of stock. We know of no other Nursery in the East that will have this efficient equipment. These are examples of the progressiveness of our Nursery. We want you to have the best stock available, and sincerely believe we produce it here at Princess Anne, where soil and climatic conditions are ideal for growing Nursery Stock.

We are traveling thousands of miles each year in our search for new fruits and better types of the older varieties to propagate and pass on to our patrons. We have established a test block and scion orchard here at Bountiful Ridge of the varieties we list and many others so as to have comprehensive information about them and bud wood that we know will be true-to-name. Our travels bring us in contact with the many problems of the growers relating to varieties, orchard location, soil, cultivation, diseases of trees, etc. Our suggestions and recommendations are often helpful and we hope you will feel at ease to present your problems to us.

You should visit our exhibit at the various Horticultural Meetings, see the type of stock we grow, have a personal talk with a direct representative of our Nursery; let us show you motion pictures in actual colors on the trees just as though you were right on the scene looking at them. Let us show you scenes of our Nursery Stock as it grows in the rows, how it is propagated, how it is dug, graded, bundled and packed for shipment to you. Few people realize the intricacies involved in the operation of the up-to-date nursery so we purchased this equipment that you might know more about us and that we might give you more authentic information about our newer varieties of fruits, as well as the older varieties which have been in production for years. We want you to know what we are doing at Bountiful Ridge in an effort to grow and deliver stock that will please you and make you feel that the Bountiful Ridge Nurseries is a dependable place for you and your friends to secure your planting needs in Nursery Stock.

We want all of our old customers to know that the Kemp Boys at Bountiful Ridge deeply appreciated their orders last year and we hope it will again be our privilege to have their orders and their friends' orders this year. Our best customers are those who have planted Bountiful Ridge Grown Stock and their friends who they have referred to us. Note some of the fine letters we have received from our customers as they are listed in this catalog. We are alert to your planting needs in the type of stock and varieties, essential for your success wherever you are located and are making every effort possible to grow stock which represents 100% value and stock which will give results wherever it is planted, if it is cared for properly. We are strengthening the weak links in our chain of service to you each year. You will find our recommendations and descriptions authentic and dependable. We want you to think at all times of the Bountiful Ridge Nurseries as the most dependable source to secure your planting needs in Nursery stock. We pledge ourselves to give improved service and the same dependable stock in the future.

Facts Every Apple Grower Should Know!

Agriculture Bureau Statistics Report on Apple Industry

Number apple trees different census year and average production.

Year	Bearing Trees	Non-bearing Trees	Total Crop Bushels
1910	151,300,000	65,800,000	215,592,000
1935	82,500,000	17,500,000	155,074,000
Decrease	68,800,000	48,300,000	60,518,000

The above decrease covers a period of 25 years in the apple industry that reflects a shortage of trees that is bound to have an effect on production for several years to come and is of deep interest to every apple grower.

■ ■ ■

Population U. S. Different Census Years

1910—Approx.	92,000,000
1935—Estimated	130,000,000
Increase—Estimated	38,000,000



Our 2-yr., 5 to 6 ft. and 2-yr., 4 to 5 ft. Apple Trees. Note the well branched tops and excellent root system.

The above facts are very significant when considered as a basis for future apple tree plantings, because,

1—A heavy and constant decrease in the number of apple trees has taken place in the period 1910-35, the number in 1935 being not greatly more than half of 1910.

2—The number of non-bearing trees in 1935 but little more than 25% of the number in 1910.

3—An increase in average tree production from 1910 to 1925 has taken place, but the difference in average tree production since then has not been significant, for a material gain.

4—The normal increase in population of more than one million each year means increased consumption of apples and 130 million people must be eating a lot more apples than 92 million in 1910.

Therefore if we are to believe these census figures America will consume more apples from this time forward than ever before in history. Surely the apple grower today has every reason to increase his planting for the future and we cannot help but feel that the wise grower will continue to invest each year in trees to insure his future success in meeting this new demand for apples.

Millions of older trees have passed their profitable production age as to tree and variety and should be replaced with new and improved types.

Each year it becomes more apparent that the farsighted grower should bring his plantings up-to-date with the newer types of apples which have quality and commercial merit, looking forward to the time when our national demand will be doubled, tripled and redoubled for better apples.

We here at Bountiful Ridge feel the planter should select his future plantings carefully, he should know the source of his fruit trees to be dependable. It is our aim to be such a source of supply for we want to give our customers the very best their dollar will buy in hardy, thrifty dependable nursery stock.

Our listings are selected with the greatest care to give our customers the best types of the old popular varieties and all the newer fruits available which show commercial merit.

You will find our descriptions honest and reliable, they have in most cases been checked by actual observation by our fruit staff in bearing orchards throughout the country. We know you will be pleased with what you buy from us and ask you to give our stock a trial.

"It pays to plant Bountiful Ridge Grown Fruit Trees and Berry Plants. Proved Best by Test."

A PROGRESSIVE AND MODERN NURSERY

THERE IS NO GUESS WORK WHEN YOU PLANT BOUNTIFUL RIDGE GROWN STOCK.

You know what you are getting is going to be right. Uniform grades, disease free, true to name stock, is the beginning of a profitable orchard.

THE WORLD'S GREATEST AUTHORITIES ON THE IDENTIFICATION OF FRUIT TREE VARIETIES BY LEAF AND GROWTH CHARACTERISTICS, INSPECT OUR NURSERY EACH YEAR AS AN ADDED ASSURANCE OUR VARIETIES ARE TRUE-TO-NAME.

TO WHOM IT MAY CONCERN:

This is to state that we have examined for trueness to name all the saleable apple, pear, cherry, and plum stock of Bountiful Ridge Nurseries, near Princess Anne, Maryland, and as they now stand in the Nursery Row all varieties are, to the best of our knowledge and belief, true to name.

A. P. French
Prof. of Pomology

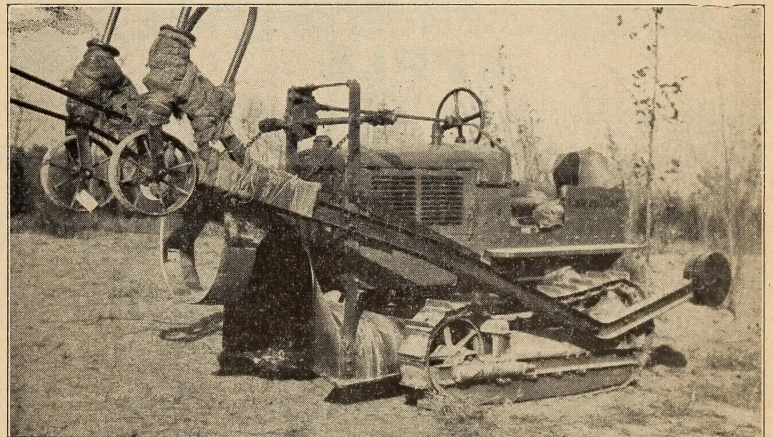
Amherst, Massachusetts
August 30, 1937

J. K. Shaw
Research Prof. of Pomology

Ideal soil and climatic conditions - Nearly 50 years fruit tree production experience - Modern nursery equipment - Personal supervision and a genuine desire to deliver to you the best it is possible to grow are some of the reasons you should plant nothing but Bountiful Ridge Nursery Grown Stock.

THE BOUNTIFUL RIDGE NURSERIES' IMPROVED MODERN DIGGING EQUIPMENT.

We quickly grasped the advantages of this modern digging outfit and purchased the equipment in 1933. The dreadnaught digger attached to a high clearance Caterpillar tractor is your answer to better rooted stock. Note the wide cutting blade which runs about 18 in. in the ground making a complete cut of the root system of trees and other nursery stock. You get the full root system in this way with no damaged stock. Bountiful Ridge leads the way in modern Nursery equipment for the production of fruit trees and plants.



This modern digger at work in one of our peach tree blocks. The blade running at full depth giving full root system to every tree. This outfit is operated by one man and is capable of cutting and lifting ready for pulling and grading 100,000 trees a day. It is indispensable at Bountiful Ridge where we have growing more than 1,000,000 fruit trees of the various species.

"It Pays to Plant Bountiful Ridge Grown Trees and Plants—Proved Best by Test"

FRUIT DEPARTMENT

BOUNTIFUL RIDGE NURSERIES.



ARE YOU PLANTING THE BEST

New and Improved Apples

OF RECENT
INTRODUCTION

BLAXTAYMAN

TRADE MARK REG. U.S. PAT. OFF.

APPLE

● The Planters' Dream Has Come True. ● Here Is A Highly Colored, Dependable Staymans Type Apple.

It's Record in 1937 Will Establish the BLAXTAYMAN Generally as One of America's Foremost Commercial Apples.

"THIS IS THE MOST BEAUTIFUL CROP OF STAYMANS TYPE APPLE I HAVE EVER SEEN. THIS SHOULD BE THE GROWERS' ANSWER TO THEIR DEMANDS FOR A BETTER STAYMANS APPLE". An apple buyer made these remarks when looking at a 7-year old Blaxtayman orchard near Bridgeville, Delaware.

The story of a 7-year old Blaxtayman Orchard near Bridgeville, Del., in 1937.

The season of 1937 proved a great year for the Blaxtayman. Apple growers in all sections of the Eastern fruit belt have been waiting patiently for their young plantings of Blaxtayman to fruit for them and their fondest wishes for a definite improved Staymans type apple were realized. They watched their young trees zealously as the fruit began to color early in the season and continued to color until it reached a beautiful, full bright, red color, without a trace of stripe and best of all 100% of the apples attained good color regardless of location on the tree. What more could a grower desire? One orchardist near Bridgeville, Del., picked his Blaxtayman more than two weeks before he picked his regular Staymans and while we were in this orchard taking some photographs of the trees on September 20th, an apple buyer came through the orchard and stated: "This is the most beautiful crop of Staymans type apple I have ever seen; this should be the growers' answer to their demands for a better Staymans apple." We were taking motion pictures of these trees in actual colors and they were a beautiful sight. These trees which were 7 years old averaged about 8 bushels to the tree. In order to get more definite information on this we bought the product of two of these trees and let them remain on the trees until October 9th when we picked every apple from the trees and again took colored photographs of the fruit on the trees and after picking, and instead of the apple turning too dark it continued to attain even a brighter, more attractive red and then truly it was all a grower could desire in a Staymans type apple. We shall be glad to show these motion pictures of this orchard, taken in colors, at our various exhibits and give you the opportunity to see for yourself what this Great Apple will do.

Today more than ever before the consumer is demanding better color and finer quality in the fruit they buy, therefore it is absolutely necessary that the grower plant trees of and produce the best strains of fruit available so as to command the highest prices obtainable for his fruit in the future. We have watched closely other strains of the improved of Staymans being off-

ered and from observation we say unhesitatingly that the Blaxtayman leads in the field improved types of Staymans being offered at the present time. It was certainly gratifying to us as we traveled among the orchardists in the Staymans producing sections of the East this past season and saw the satisfaction the Blaxtayman was giving. Many orchardists are starting to replace their old Stayman orchards by interplanting while others are planning to make new plantings of the Blaxtayman so as to keep pace with the times and grow the best for the future markets. These are simple facts every Fruit grower must realize and face and you should consider them carefully when planning your plantings this year.

ORIGIN—Original tree planted in the State of Washington, in 1906. Its ability to produce large, brilliantly colored, solid red apples with texture and quality and shape of the Staymans Winesap, was brought to our attention in 1925. Second and third generation grafts bore in 1929, producing the same type of fruit. Introduced to the Eastern Fruit Grower, Spring 1930. For many years the fruit growers realized the weakness of the Staymans variety was the fact that it failed to get an attractive color. In the Blaxtayman, we have every characteristic of the Staymans Winesap with the exception that the fruit colors a beautiful solid red, making it an extremely attractive apple.

First offered by the Bountiful Ridge Nurseries in the Spring of 1930, we consider it one of the most valuable apples of recent introduction to the Eastern fruit grower. See back cover for color illustration.

The fruit is equally as large or larger than the regular Staymans. The tree is equally as thrifty as the old Staymans. The apple has a slightly tougher skin, which tends to make it keep better in storage and carry better to the markets. The apple will not scald in storage as readily because of its clear bright red color without any stripe. The apple has the same shape as the old type of Staymans Winesap. Because of its solid red color you can pick the apple earlier if desired and seek the export markets with one of the best quality apples now in cultivation. Because of its solid red color you can harvest almost 100% extra fancy grade and fancy grade apples.

See Prices of BLAXTAYMAN TREES Next Page.

RICHARED

TRADE MARK REGISTERED
IN U.S. PATENT OFFICE

THE DELICIOUS SUPREME

SEE OUTSIDE BACK COVER
FOR COLOR ILLUSTRATION

INTRODUCED TO THE EASTERN FRUIT GROWER IN 1928

IT HAS SUCCESSFULLY TRAVELED THE EXPERIMENTAL ROAD

THE RICHARED DELICIOUS IN 1937 WAS GENERALLY RECOGNIZED AND TRULY PROVED TO BE "THE DELICIOUS SUPREME". ITS SUPERB QUALITY, ITS BEAUTIFUL, BRIGHT, SOLID RED COLOR TYPIFIES ITS NAME—"RICHER-RED"

Origin—Original tree planted by Mr. G. T. Richardson near Monitor, Washington, in 1910. The tree bore these bright solid red apples from the beginning of its production. The first grafts taken from the original tree bore in the Fall of 1925. In 1926 and 1927 two other generations of this remarkable variety bore fruit which was identical to that of the parent tree. The variety was trade marked in 1927 as the Richared Delicious. The Bountiful Ridge Nurseries introduced it to the Eastern Fruit Grower in 1928.

DESCRIPTION—The RICHARED DELICIOUS is a blood-red mutation of the Famous Delicious Apple that promises to revolutionize the growing of Delicious apples. No orchardist can overlook these facts about the RICHARED. You have a tree of the same hardy characteristics as the old Delicious, producing an apple with that same appetizing delicious flavor, producing an apple that colors a full bright red, with out a trace of stripe, on every part of the tree, the apple attaining this color weeks before we usually pick the regular Deli-

icious, thus enabling everyone who grows it to eliminate the loss from drop apples, to pick earlier, to market earlier, if he desires to do so, to seek a foreign market with a high quality apple that has superior carrying qualities when picked early and to keep it longer in storage for our late markets if desired. These advantages combined with the fact that better than 80% of the apples will grade extra fancy grade, if properly cared for, should make it one of the most profitable apples for the fruit grower.

This great apple is now fruiting quite generally thru out the U. S. and each year its advantages over other Delicious sports being offered by various nurserymen become more pronounced.

The higher prices received during 1937 for the fruit of the improved strains of the Delicious apple proved that the grower can "CASH IN ON AMERICA'S MOST POPULAR APPLE WITH THE RICHARED DELICIOUS" and you should plant this year for the future markets when quality and beauty of fruit will prevail.

Prices on RICHARED DELICIOUS and BLAXTAYMAN

These Prices are for Spring 1938

ONE YEAR TREES

	1 to 10	10 to 50	50 to 300	300 to 600	600 or more
1 year, 5-6 ft.	\$.75	\$.65	\$.50		
1 year, 4-5 ft.70	.60	.45	.40	.35
1 year, 3-4 ft.65	.50	.40	.35	.30
1 year, 2-3 ft.50	.45	.35	.25	.20

TWO YEAR TREES

	1 to 10	10 to 50	50 to 300	300 to 600	600 or more
2 year, 5,6 ft., 11/16 up.	\$1.00	\$.70	\$.60	\$.50	\$.45
2 year, 4-5 ft., 9-11/16...	.85	.60	.50	.45	.40
2 year, 3-4½ ft., 8-9/16...	.65	.50	.45	.40	.35
2 year, 2-3 ft., 5-7/16...	.50	.45	.35	.30	.25

GALLIA BEAUTY

SEE INSIDE FRONT COVER
FOR COLOR ILLUSTRATION

THE GROWERS' CHOICE WHEREVER IT IS PRODUCING

IT LEADS ALL OTHER RED ROME BEAUTY TYPE APPLES. IT CAN RIGHTFULLY BE CALLED "ONE OF AMERICA'S MOST BEAUTIFUL APPLES". DEMAND THE GALLIA BEAUTY WHEN PLANTING THE RED ROME TYPE APPLE.

We had the privilege of seeing this wonderful apple fruiting in several of the Eastern states this year and regardless of its location the Gallia Beauty was the pride of the grower. We have never seen a variety adapt itself to varied conditions, bear as young and produce as heavy on young trees as the Gallia Beauty and we are quite proud of the fact that we were one of the first Nurseries to recommend the variety and have grown more trees of them than any other Nursery in the U. S. There are many types of red rome being offered today by various nurseries and most of them are of an inferior strain and we urge the planters to know definitely the strain of red rome they are planting. The Gallia Beauty originated in Ohio and is a typical Rome type tree, being thrifty, hardy and productive. The fruit of the Gallia Beauty colors a brilliant bright red, without stripe and seems to be of higher quality than the regular Rome Beauty, and keeps exceptionally well in storage. The Gallia Beauty will size up equal to the regular Rome but many of the other inferior so-called Red Rome types will not size up satisfactory and again we urge you to plant only the Genuine Gallia Beauty. We offer you the best and charge you no more; Prices of Gallia Beauty trees are the same as other standard varieties listed on page 8 of this catalogue.

OHIO RED ROME Among the first of the Red Rome types to be offered to the planting public and the nearest rival to the Gallia Beauty Red Rome type of apple. From observation it would be hard to distinguish this variety from the Gallia Beauty Red Rome. However, there may be some sections where possibly this type would be equally as satisfactory as the Gallia Beauty.

The "COLORA" Red York

Granted Plant Patent No. 168 March 10, 1936

SEE FRONT COVER FOR COLOR ILLUSTRATION

**"The Planters Dream of A Bright, Solid Red, York Imperial Apple
Has Come True"**

NOW YOU CAN HARVEST 100% U. S. FANCY AND NO. 1 YORK IMPERIAL APPLES BY PLANTING THE "COLORA RED YORK." WITHOUT QUESTION THE FINEST TYPE OF RED YORK IMPERIAL APPLE NOW BEING OFFERED.

THE 1937 APPLE SEASON AGAIN DEMONSTRATED CLEARLY THE NEED OF AN IMPROVED YORK IMPERIAL APPLE.

NO GROWER CAN MINIMIZE THE IMPORTANCE OF EARLIER COLORING AND BETTER COLOR ON THE YORK IMPERIAL APPLE.

THE "COLORA RED YORK" IS YOUR ANSWER

IT NO LONGER PAYS TO PLANT THE OLD TYPE YORK WHETHER YOU ARE REPLANTING YOUR OLD ORCHARD OR MAKING NEW PLANTINGS.

TREES GROWN and FOR SALE EXCLUSIVELY by **BOUNTIFUL RIDGE NURSERIES**

ORIGIN—During the planting season of 1908, Lloyd Balderston III's father made a planting of several hundred York Imperial Trees on his farm at Colora, Cecil County, Maryland. When these trees came into fruiting, Mr. Balderston found among them a tree which seemed to produce fruit which was equally as large as the fruit on the other trees in the same orchard and still a typical York Imperial in every respect except that it started coloring earlier and at maturity every apple on the tree was very highly colored fruit. He continued to observe this for a number of years, the tree never failing to produce this type of fruit according to his observations. During a conversation with Mr. Lloyd Balderston, III, at the Winter Meeting of the Maryland Horticultural Society, held in College Park, Maryland, January 1933, he told us of the type of York Imperial which he had on his place.

FACTS ABOUT THE "COLORA RED YORK"—As soon as we knew definitely where the original tree was, grafts were set from the original tree to reproduce the fruit so as to know whether it would come true to type. We observed this original tree very closely during the fruiting seasons of 1933, 1934, and 1935 and each year all of the fruit which it bore would be extremely highly colored apples attaining this color at least three weeks before the regular York Imperial in the same orchard. Our main interest then was to know whether our grafts which we set would produce true to type and during the fruiting season of 1935 some of these grafts bloomed and set fruit and the fruit which they bore were identical to the highly colored fruit borne on the original tree. Again in 1936 more grafts which were set came into fruiting and bore this splendid type of fruit, proving to us without question that we had in this tree a definite variation from the old type of York and an improved apple which would mean millions of dollars to the growers of the York Imperial type of apple.

After these grafts reproduced this splendid type of fruit in 1935, we made application during the month of October for a patent on the variety through Mr. Balderston and on March 10, 1936, the Plant Patent Authorities, recognizing the "COLORA" Red York as a new and distinct improved type of the York apple granted plant patent No. 168 on the "COLORA" Red York Imperial. Exclusive propagation and distribution rights, being assigned to the BOUNTIFUL RIDGE NURSERIES, Princess Anne, Md. **THE TRUE "COLORA RED YORK" CANNOT BE SECURED FROM ANY OTHER SOURCE AND PLANTERS SHOULD BE ESPECIALLY CAUTIOUS IN ACCEPTING ANY TREES FROM ANY OTHER NURSERY WHICH ARE REPRESENTED TO BE THE COLORA RED YORK.**

In 1935 the "COLORA" Red York started to color around August 1st, whereas the regular York Imperial began to color around August 12th. On September 2nd the fruit of the "COLORA" Red York Imperial was sufficiently colored throughout the tree to pass U. S. No. 1 grade on color, whereas you could hardly find any fruit on the regular York Imperial in the same orchard, regardless of its favorable location, that would pass U. S. No. 1. We picked all of the fruit from the "COLORA" Red York Imperial tree on October 7th. A large portion of it would have gone into the extra fancy and fancy grades and all of it would have graded a high grade of U. S. No. 1. At the same time, Mr. Balderston had just begun to pick the regular York Imperial and it was necessary to spot pick the trees in order to get fruit with sufficient color to pass inspection. Here alone are advantages which are well worth the consideration of every grower of the York Imperial type of fruit.

It has been our privilege to have some very prominent fruit growers to see this original tree as well as some of the better authorities on apples from various colleges of the Eastern States, all of whom have expressed themselves as being very favorably impressed with the "COLORA" Red York Imperial when compared with

the old type of York Imperial being produced in the same orchard.

We say without hesitation that this bids fair to become the most important apple to the fruit growers in the York Imperial producing area that has been offered to them in many years, for without question it will revolutionize the production of the York Imperial type of apple giving to the growers fruit that will color 100% over the entire tree under most any condition and will enable them to pick their York Imperial apples at least a week earlier if desired and to pick the entire tree at one picking and will enable them to pack out a fancy pack of York Imperial apples if desired.

These are the simple facts in regard to the "COLORA" Red York. We are not trying to paint a flowery picture that will deceive the planters as to its real value. The fruit which we have displayed during the past few years and which we are displaying this year came from the original tree and is grown at an elevation of approximately 300 ft. Most of the growers can realize what wonderful color this apple would show in the principal York producing area where the elevation ranges from 900 ft. to 1400 ft.

If there are further questions that any grower wishes to ask in regard to this variety, we will be glad to answer them if possible to do so.

The following prices prevail on "COLORA RED YORK IMPERIAL" Trees. These prices are subject to our usual discount of 5% and free delivery on orders of \$50.00 or more. Prices listed are per tree.

ONE YEAR TREES	1-10	10-50	50-300	300-600	600 up
1 year, 4-5 feet.....	\$.75	\$.60	\$.45	\$.40	\$.35
1 year, 3-4 feet.....	.65	.50	.40	.35	.30
1 year, 2-3 feet.....	.50	.45	.35	.30	.25
TWO YEAR TREES					
2 year, 5-6 ft., 11/16 up....	\$1.00	\$.70	\$.60	\$.50	\$.45
2 year, 4-5 ft., 9-11/16.....	.85	.60	.50	.45	.40
2 year, 3-4 ft., 7-9/16.....	.65	.50	.45	.40	.35
2 year, 2-3 ft., 5-7/16.....	.50	.40	.35	.30	.25

OUR LISTINGS OF NEW AND IMPROVED FRUITS TYPIFY THE MARCH OF PROGRESS IN THE FRUIT PRODUCING WORLD

THEIR PLANTING MEANS LARGER PRODUCTION, HIGHER QUALITY, BETTER SATISFACTION TO THE CONSUMER AND GREATER PROFITS TO THE GROWERS.

A McIntosh Type Apple for the Entire Year

THESE SPLENDID VARIETIES ARE OF THE FAMOUS McINTOSH PARENTAGE. THEY ARE TAKING THEIR PLACE AMONG OUR LEADING COMMERCIAL VARIETIES IN MANY SECTIONS. NO PLANTER CAN AFFORD TO IGNORE THEIR MERITS.

WE HAVE A FINE LOT OF TREES OF ALL THESE IMPROVED AND NEW TYPES OF THE McINTOSH THIS YEAR.

MILTON Typical McIntosh, coloring full red; very good quality, about equal to McIntosh, being same textured apple. Tree hardy and vigorous. Ripens three to four weeks before McIntosh or just before Wealthy.

KENDALL Of all the McIntosh seedlings originated at the Geneva Station, Kendall, the last one to be introduced, is by far the most attractive. It is handsomely colored over the entire surface with dark red covered with a rich bloom. It has attracted more attention from fruit growers than any other new apple. Its season is about that of McIntosh, but it keeps a little longer. The apples are large, trim in outline, and possess the whitish, fine-grained flesh of McIntosh. The flavor is much the same but more sprightly than that of McIntosh. The apples hang better than McIntosh but not as well as Cortland. Kendall promises to be the "apple of apples" in the McIntosh season.

MACOUN Very highly colored, having no stripe. Same quality as McIntosh, same textured fruit, hangs to the tree better than McIntosh, and ripens two to three weeks after Cortland. Tree about equal to McIntosh, a regular bearer, and strongly recommended to lengthen the McIntosh season and give the Middle Atlantic and Southern growers a McIntosh fruit they can grow successfully.

EARLY McINTOSH A McIntosh Hybrid being almost solid red in color, very crisp and juicy, with the same high quality as the well-known McIntosh. A thrifty grower and a regular bearer. Your opportunity to have the McIntosh

LAWFAM A product of the Central Experimental Farm, Ottawa, Canada. The Lawfam can possibly be termed the most beautiful of all improved Types of McIntosh. The Lawfam is the result of an actual cross between the Lawver and Fameuse. The tree has proven very hardy, equal to the Old McIntosh, it is a very heavy yielder and the fruit is very uniform and regular in shape. The apples are very highly colored and hang well to the tree so that they may be picked from one to two weeks later than the Regular McIntosh if desired. Apparently the Lawfam has overcome the greatest weakness of the McIntosh Apple in that it hangs well to the tree. The fruit of the Lawfam is particularly crisp and juicy, being mild in flavor or very similar to that of the Regular McIntosh. As the fruit is being produced in the Canadian Experimental Grounds, it keeps well in to the Early Spring months and we believe that this variety will lengthen the marketing period of the Famous McIntosh apple considerably. It is certainly worthy of a trial planting in any section the Regular McIntosh Apple can be produced successfully. The fact that the Lawfam is of distinct McIntosh type fruit and tree and the fact that it hangs well during the ripening period is indeed gratifying and it seems our constant search for an apple of the Famous McIntosh type that combines these important features has at last brought the Fruit Growing Industry a variety which can be planted to replace the Old Type of McIntosh. Our supply of trees is limited this year to a small amount of two year stock and about fifteen hundred one year old trees. (Prices are 10c per tree extra over other standard varieties as listed on page 8.)

YELLOW DELICIOUS This apple has received almost national publicity during the last few years and is famous for its unique quality, embracing a combination of flavors which is hard to equal. This, combined with the fine, firm textured flesh of the apple and the beautiful, golden yellow skin at once attracts the eye of the consuming public. The tree, while not a large growing type, is thrifty and extremely productive, coming into fruiting and giving an abundant crop while very young. We are offering this splendid apple to our customers at the same price as all other varieties listed in our General Catalog. This apple should be picked at just the right period and placed in cold storage for late winter use.

IMPROVED ALL RED JONATHAN

A special bud selected strain of the famous Jonathan apple. We hunted a good while before we found what we considered the right type of improved Jonathan apple to offer our customers. We have a fine lot at this time to sell and if you are not getting enough color on

type as a very early apple. Cash in on the popularity of the McIntosh by growing Early McIntosh for your markets.

IMPROVED ALL RED McINTOSH

A special bud selected strain of the famous McIntosh apple, coloring a solid red without a trace of stripe. Without question this is the finest type of McIntosh that has come to our attention and will say that if you are not getting sufficient color on your present plantings of McIntosh you should make your new plantings of this Improved Type this year. We can supply these in both one and two year old trees.

LOBO Same season as the McIntosh, larger apple, and colors a more full red than the regular McIntosh. Extra good quality. Tree equal to McIntosh. Comes recommended highly to replace the regular McIntosh for the Middle Atlantic and Southern growers.

CORTLAND is an improved late McIntosh, The fruits of the two varieties are similar, but those of Cortland are more oblate, average larger, and are more uniform in size; they have more color and the red is lighter and brighter and the stripings and splashes are laid on differently; the taste of Cortland can hardly be distinguished from that of McIntosh; the flesh is firmer but just as juicy; the apples do not drop as readily and ship better.

MELBA A real McIntosh in quality and appearance only more flat in shape, ripening just before early McIntosh. Of Canadian origin. Tree vigorous and productive. 1 yr. trees only.

your Jonathan plant this improved strain and you will be well satisfied with the results. Can supply in both one and two year old trees.

TURLEY The Turley is a Winesap seedling from the orchard of the Indiana State Horticulture Society. The tree is a vigorous grower resembling that of the Staymans Winesap. The apples are large, almost a solid red color, the texture of the fruit being almost identical to that of the Staymans. It is extremely productive. While not largely distributed this apple promises to become a favorite wherever the Winesap type of apple can be grown successfully.

ANOKA One of Prof. Hansen's hybrids and noteworthy for its beautiful red striped fruit and early bearing, often producing apples the second year after planting. This apple comes to us highly recommended. Fruit good quality; ripening shortly after the Transparent. It is worthy of trial. It should be more adapted to the central and northern districts than to the eastern seaboard fruit sections. We can supply 1 yr. trees only.

Apple Varieties Continued on Next Page

FOR PRICES ON ABOVE SEE PAGE 8

General List of Varieties and Prices of

APPLE TREES

No other fruit can take the place of the apple whether it is planted for home use or in a large commercial planting for profit. No other fruit will thrive over so wide a range of soil and climate. No other fruit has the general health-giving merits of the apple. **THE APPLE TODAY IS THE KING OF ALL FRUITS.** We have listed here some varieties that are adapted to most any section of the **WORLD**, and you can select the varieties which you know will succeed for you wherever you wish to plant them. Statistics gathered over a period of years show that **FRUIT GROWING HAS PROVEN ONE OF THE MOST PROFITABLE BRANCHES OF AGRICULTURE.** NOW IS THE OPPORTUNE TIME TO START A NEW ORCHARD SO IT WILL BE IN FULL FRUITING IN A FEW YEARS AND YOU CAN REAP THE BENEFITS DURING THE BETTER DAYS WHICH ARE BOUND TO COME SOON.

Again our prices on apple trees are within your reach so that you can go ahead with your proposed plantings for 1938.

"THE THOUGHTFUL FRUIT GROWER ANTICIPATES HIS PLANTING NEEDS AND BUYS EARLY WHEN HE CAN SECURE EXACTLY WHAT HE WISHES TO PLANT". YOU WOULD DO WELL TO FOLLOW THE LEADERS OF THE FRUIT GROWING INDUSTRY.

"ORDER EARLY WHILE OUR ASSORTMENT IS COMPLETE".

Figure your order on apple trees at the following rates: (Prices listed are per tree).

	1-10	10-50	50-300	300-600	600 up
ONE YEAR TREES					
Extra Fine, 5-6 ft.....	\$.50	\$.45	\$.40	\$.32	\$.30
Planters Grade, 4-5 ft.....	.45	.40	.33	.27	.25
Medium size, 3-4 ft.....	.40	.35	.30	.27	.25
Small size, 2-3 ft.....	.35	.30	.25	.22	.20
TWO YEAR TREES					
Largest size, 5-6 ft., 11/16 in. up..	.65	.55	.45	.42	.40
Medium size, 4-5 ft., 9-11/16 in....	.60	.50	.40	.37	.35
Small size, 3½-5 ft., 7-9/16 in.....	.55	.45	.35	.30	.25
Light grade, 2½-4 ft., 5-7/16 in....	.45	.35	.30	.25	.20

(IF INTERESTED IN LARGE QUANTITIES GIVE YOUR DEFINITE LIST FOR LETTER QUOTATIONS.)

THE FINEST MAN'S INGENUITY CAN GROW—THE CHEAPEST MONEY CAN BUY

The Reliability of the Nursery and the Quality of the Tree Being Considered

NOTE—Unless otherwise stated can supply varieties in both One and Two Year Trees.

SUMMER VARIETIES

CRIMSON BEAUTY Originated in Maine. Very hardy, strong grower and very productive; extremely early bearer, earliest ripening apple known. A handsome red apple. Flesh sub-acid, pleasant to eat out-of-hand. Ripens July 1st. 1 yr. trees only

YELLOW TRANSPARENT Tree upright, and a very early and abundant bearer. Fruit of good size, skin clear white, turning to a pale yellow; flavor acid and very good. Ripens from ten days to two weeks earlier than Early Harvest. Ripens July 1st to 10th.

ANOKA See description page 7.

WILLIAM'S EARLY RED Among the earliest to ripen and the largest of all early apples, a better name for it is "Big Red Apple." Flesh is white, juicy and slightly tart, tender and crisp. A very good one, like Transparent, bears heavily on young trees. July 10th to 15th. 1 yr. trees only.

EARLY HARVEST (YELLOW HARVEST) Medium to large; pale yellow; beautiful; fine flavor. Tree moderate, erect grower, good bearer. Ripens July 15th to 30th. 1 yr. trees only.

Our Trees Inspected by Prof. Shaw and Prof. French for Trueness to Name

Amherst, Massachusetts
August 30, 1937.

TO WHOM IT MAY CONCERN:

This is to state that we have examined for trueness to name all the saleable apple, pear, cherry, and plum stock of Bountiful Ridge Nurseries, near Princess Anne, Maryland, and as they now stand in the Nursery Row all varieties are, to the best of our knowledge and belief, true to name.

A. P. French
Prof. of Pomology

J. K. Shaw
Research Prof. of
Pomology



Mr. Geo. W. Kemp, General Manager of our Firm, standing among some of our one year budded apple trees. Stock such as this is hard to equal. We have thousands of this kind of trees to deliver to our customers this year. Buy your requirements now before other progressive planters absorb our available supply of this fine stock.



McINTOSH RED

EARLY McINTOSH See full description on page 7.

DUCHESS OF OLDENBURG Vigorous grower; Russian origin; large; striped; tender, juicy, sub-acid; good; regular and abundant bearer. One of the hardiest kinds known. Ripens July 20th.

STARR One of the finest early apples grown in New Jersey. Can be picked over a long period of time; large and of fine yellowish color; a great bearer and valuable market variety; comes into fruiting very young. July 15th to 30th.

MELBA See full description on page 7.

RED GRAVENSTEIN Ripens continuously during a period of several weeks and should have two or three pickings, beginning July 25th. 1 yr. trees only.

MONMOUTH BEAUTY Introduced by us in 1925 and is one of our finest summer apples. Tree very hardy, fruit large, well colored, excellent for cooking or eating. It excels all others during its season. Can only supply in 1 yr. trees.

MILTON See full description on page 7.

AUTUMN VARIETIES

WEALTHY This beautiful, moderate sized, brilliant red apple is of fine quality, one of the best of its season. It is a relatively good keeper, and owing to the hardness of the tree, its adaptability to cold climates and early bearing habits, it can be profitably planted as a filler. Season August 15th to 25th.

SUMMER RAMBO Large, flat, streaked red and yellow; very tender, juicy and fine flavored. Tree an upright grower, hardy and productive. Ripens August 20th to 25th.

TWENTY OUNCE Fruit exceptionally large, juicy and crisp, sub-acid, color green with slight blush and red stripe. Tree thrifty and very productive, generally recognized as our best summer baking apple.

GRIMES GOLDEN An apple of the highest quality. It is one of the fancy dessert apples and ranks with Delicious and Jonathan on the market. Medium to large; bright yellow with pink cheek; flesh fine grained, juicy, with a very pleasing spicy flavor. The tree is hardy, grows upright, and is quite disease resistant. Highly recommended and widely planted to polonize self-sterile varieties. Ripens Sept. 5th to 15th.

SMOKE HOUSE Comes into bearing moderately young. It has a thin skin of yellow, striped with rather a dull red, and is very attractive. Ripens September 10th to 20th. 1 yr. trees only.

NORTHWESTERN GREENING Tree vigorous grower, quite hardy. Fruit large to very large; green, becoming yellowish-green when ripe; flesh yellow, fine grained and firm; flavor a good sub-acid; very smooth and attractive. Ripens September 15th to 20th.

JONATHAN The Jonathan is justly one of our great commercial apples. It is hard to equal for hardness and productiveness. The apples smooth and attractively colored being medium in size. The flesh is firm, crisp, tender, juicy, good quality. An excellent eating or cooking apple. Used extensively as a filler and polonizing variety. It is especially adapted to the Central and Northern fruit districts. No commercial orchard of the North is complete without the Jonathan for a late fall apple.

IMPROVED ALL RED JONATHAN
See full description on page 7.

OPALESCENT Very large, brilliant dark red all over. Tree bears young and very prolific. Average quality. Ripens September 20th to 25th. 1 yr. trees only.

WINTER VARIETIES

YELLOW DELICIOUS
See full description on page 7.

McINTOSH A choice variety of the Fameuse type. Tree vigorous with spreading head; a good annual bearer. Fruit above medium to large, highly perfumed; almost covered with brilliant crimson; a beautiful fruit; flesh snow white, crisp, very tender, slightly aromatic, sub-acid; very good quality. Ripens Sept. 5th to 20th.

IMPROVED ALL RED McINTOSH
See full description on page 5.

KENDALL A McIntosh seedling and a product of the Geneva, N. Y. Experiment Station. Very attractive, being handsomely colored over the entire surface with dark red covered with a rich bloom. Season about same as McIntosh but seems to keep longer. The apples are large, trim in outline and possess the whitish fine grained flesh of McIntosh. Flavor slightly more sprightly than McIntosh and the fruit hangs better to the tree than McIntosh but not as well as Cortland.

LAWFAM See full description on page 7.

LOBO See full description on page 7.

RICHARD DELICIOUS See full description page 5.

DELICIOUS A remarkable variety introduced in the West several years ago, where it is being largely planted and rapidly taking first rank both for commercial and home orchards. Fruit large, nearly covered with brilliant dark red; flesh fine grained, crisp, and melting; juicy, with a delightful aroma; of very highest quality. A splendid keeper and shipper. Tree one of the hardiest, a vigorous grower. Ripens September 5th to 25th.

MEDINA The apple resembles those of Delicious, will average large and is very attractive, having a golden ground color overlaid with a beautiful solid red. Recommended by N. Y. Fruit Testing Association as an apple to prolong the Delicious season. Our supply is limited and only have one year trees. Ripens Sept. 5th to 25th.

ORLEANS A product of the New York Experiment Station of the Delicious type. Same season as Delicious only a little better keeper in common storage. The flavor, however, is more sprightly resembling that of the Stayman's. Stock very limited. Ripens Sept. 5th to 25th. One year trees only.



BALDWIN

WINTER VARIETIES (Continued)

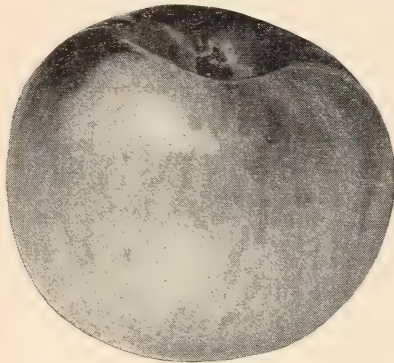
WINTER BANANA Fine, vigorous grower; large healthy foliage; early bearer. Fruit medium to large, smooth and handsome golden yellow, usually shaded with red bluish; flesh fine grained, rich, sub-acid, aromatic; highest quality. Ripens September 20th to 25th. 1 yr. trees only.

TOLMAN SWEET Medium, pale yellow, slightly tinged with red; firm, rich and very sweet; valuable baking apple; vigorous, hardy and productive. Ripens September 20th to 25th. 1 yr. trees only.

RHODE ISLAND GREENING Fruit large and handsome, smooth, dark green overspread with yellow. Flesh tender, rich, rather acid, but highly flavored and excellent; tree vigorous, spreading. Ripens Sept. 25th to 30th.

BALDWIN No variety yields larger crops or bears shipment better or is more attractive in color, size and shape than the Baldwin. It is esteemed as an eating apple and for cooking. For a commercial orchard it can be relied upon. Large, bright red, crisp, juicy and rich; tree vigorous, upright and productive. Keeps until April. Ripens Oct. 1st.

CORTLAND One of the best of the recent introduced McIntosh Types. See full description page 7.



CORTLAND

The "COLORA" Red York See full description of this great apple on page 6.

YORK IMPERIAL This is a fine, hardy, red winter apple. It succeeds over a wide range of country. Comes into bearing at four years from planting, bears regularly and heavily. The foliage and fruit are remarkably free from scab. The fruit is of medium size, skin yellow and almost wholly covered with two shades of red. Oct. 1st.

ALBEMARLE or NEWTON PIPPIN

Large, smooth skinned, beautifully colored yellow apple that usually brings the highest market price. Can only be grown successfully in certain sections of the country, principally in Virginia and New York in the east. Tree long lived and productive. Our trees propagated direct from orchards in Virginia.

NORTHERN SPY Large, roundish-conical, often flattened, slightly ribbed; handsomely striped with red; flavor rich, aromatic, mild sub-acid, fine. Keeps through winter and late into spring. Oct. 25th.

RED NORTHERN SPY Red Spy is typical Northern Spy apple except in color. The Red Spy colors a solid bright red without either stripes or splashes. If you desire more color in your Spy apples plant the Red Northern Spy.

MACOUN See full description on page 7.

BLAXTAYMAN See full description on page 4.

STAYMANS WINESAP Without question the most profitable apple ever grown in the fruit producing areas of the Central States. Tree vigorous, hardy, spreading. An early bearer and very productive. Fruit medium to large size, round approaching conic; skin smooth, slightly striped, coloring to dull red; flesh yellow, firm, tender, juicy, rich, sub-acid, aromatic; quality of the very best. A splendid late keeping variety. October 10th to 15th.

TURLEY See full description on page 7.

ROME BEAUTY Keeps in good condition till May and June. Large, round, mottled, and striped in different shades of red; flavor and quality away above the average; appearance and size are its valuable points; always sells and always brings good prices.

OHIO RED ROME See full description on page 7.

GALLIA BEAUTY RED ROME See full description on page 5.

PARAGON One of the best of the long-keeping winter varieties. Does well on almost any soil; thrifty grower and fruits young; bears regular; is of the Winesap type, good quality; coloring a deep dull red almost all over; flesh slightly yellow. November 1st. 1 yr. trees only.

MAMMOTH BLACK TWIG Excels Winesap in nearly every important point; better grower, hardier, and the fruit much larger; color even a darker red; flesh firmer; flavor milder, but fully equal. A long keeper. November 1st.

WINESAP Medium size, dark red, juicy, mild. A favorite late winter apple and a leading commercial variety on all markets, as well as a very popular home apple in the West. Is a high-class dessert apple. November 1st to 10th.

CRAB APPLES

Prices Same as All Standard Apple Trees

HYSLOP Season September to October; tree vigorous where hardy. Fruit medium; yellow ground with heavy shadings of deep crimson and splashes of maroon with heavy blue bloom. Flesh fine, firm, yellow, astringent. Bears abundantly in clusters which makes tree exceedingly ornamental. 1 yr. trees only.

TRANSCENDENT Season September; fruit medium to large; color brownish-yellow with blush of carmine; flesh firm and crisp, yellowish, fine-grained, very juicy, acid. Tree is a vigorous grower. Hardy. Subject to blight and should not be planted near other orchard trees. 1 yr. trees only.

DOLGA A Handsome Red Crab apple of medium size. The fruit jellies easily and makes rich, ruby red jelly. Tree hardy, vigorous, productive. 1 yr. trees only.

DWARF APPLE TREES

The dwarf apple trees come into bearing much earlier than the standard trees. Their low, broad heads are within reach, so that the fruit can be easily picked. These trees take up so little room that they can be planted in the garden, or even on the lawn, and with care will bear good crops within three or four years. The fruit is of extra high quality. Trees bear very early.

Because of the quarantine on all apple stock from Europe the supply of dwarf stock in this country is becoming more scarce each year. The supply is very limited this year. We can only offer the following varieties.

R. I. Greening **McIntosh** **Delicious**
2 yr., 3 to 5 ft. best.....\$1.25 each; \$10.00 for 10

French Crab Apple Seedlings for Bridge Grafting and In-Arch Work

We offer another service to our customers. We can now supply you with fine vigorous 2 yr. seedlings for the above work. You can now save those good bearing trees which have been girdled by mice or winter injury. We have a nice lot in all grades but we would advise that you order what you need as promptly as possible so as to be sure of having them when you want to do the work.

	1-10	10-50	50-100	100-500
4-5 ft.15	.12	.11	.10
3-4 ft.12	.10	.09	.08
2-3 ft.10	.08	.07	.06

PEACH TREES

WE PRIDE OURSELVES ON THE TYPE PEACH TREE WE GROW

1200 Trees Planted — 1200 Trees Growing

- Orchard Planted Dec. 10 to 15, 1936. They show an average growth of 5 ft. to 5½ ft. and 1.28 inches tree trunk diameter Oct. 1, 1937.



- THESE TREES WERE BOUNTIFUL RIDGE GROWN, 3-4 ft. GRADE, YEARLING STOCK OF THE HALE HAVEN VARIETY PLANTED AT SAND HILL EXPERIMENT STATION, COLUMBIA, S. C.
- THESE TREES WERE GROWN RIGHT - DUG RIGHT - PACKED WITH CARE - PLANTED RIGHT AND CARED FOR PROPERLY. THEY HAVE MADE AN ENVIABLE RECORD.

FUTURE OUTLOOK IN THE PEACH WORLD

PEACH ORCHARDS DURING 1937 PROVED TO BE A GREAT SOURCE OF INCOME FOR THE GROWERS.

Despite the heaviest crop generally in many years, prices remained strong and active throughout the entire season.

Millions of peach trees have been lost in the past five years due to disease and low winter temperatures, other millions have been left in a weakened unproductive condition.

The wise orchardist will remove all weak trees and inferior varieties this year and bring his orchards up-to-date with newer and better trees or recognized quality and commercial merit, thereby continuing his income through the coming years.

Fine examples of our meaning are the Golden Jubilee, Gage Elberta, Shippers Late Red, Colora and Hale Haven. These varieties brought premium prices at all times and returned the growers handsome profits over other oldtime peaches.

We were among the first in predicting the outstanding success of these peaches and have grown and sold more of them collectively than any other Nursery.

It is our belief that the Peach will continue to be the "Queen" of all fruits in the years to come if we consistently improve quality, color and marketing.

The Nation is still short many millions of peach trees under the census of 1910 and the grower need have no fear for a peach market glut for some years to come.

"Bountiful Ridge Nurseries" is constantly searching for new fruits of superior quality which will produce consistent crops and greater profits to our patrons.

We are cooperating closely with the various State Departments and the U. S. Department of Agriculture who are creating and testing many new varieties and we assure the planting public when new varieties show sufficient and definite merits, we will propagate and distribute them for general planting when available. We travel thousands of miles each year in tracing down seedling varieties and observing new and recently introduced varieties so we can pass on to our customers definite information about them. We are alert to the needs of the fruit Industry and shall endeavor to be a dependable source for the best varieties available.

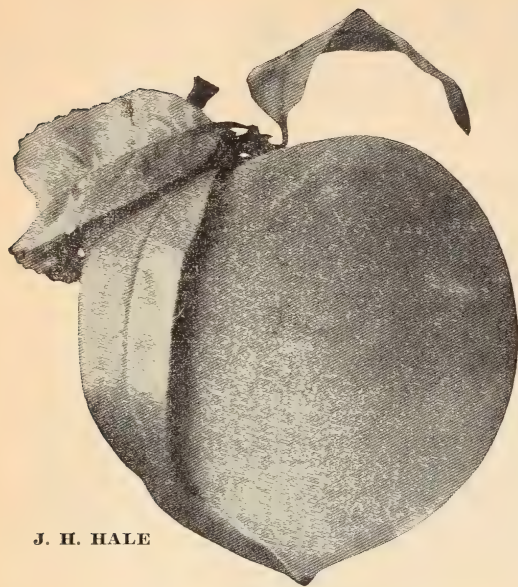
We ask you to watch our listings carefully each year and be assured that we have faith in the ultimate success of every fruit variety we introduce.

FOR THE FALL OF 1938.....WE ANNOUNCE

1. A white freestone peach, highly colored, exceptional quality, Red Bird Season.
2. A yellow freestone peach well colored, excellent quality, ripens ten days before Golden Jubilee.
3. A new apple of Duchess-Wealthy season. Very large, coloring a solid brilliant red, fine quality.

These three great commercial fruits await your approval next year. Write us for further information.

GENERAL LIST PEACH TREES



J. H. HALE

Prices On All Varieties Of Peach Trees

Figure your order for Peach trees at the following rates: (Prices listed are per tree):

If interested in large quantities submit your definite list for special letter quotations.

NOTE

Ripening order of varieties designated by bracketed numbers after name. Varieties over-lapping in ripening season indicated by sub-letter. Example, Elberta and Hale are about same season and are designated by numbers 13 and 13A. We have endeavored to give you authentic ripening order of varieties, we list, but variations may occur due to soil, fertilization and climatic conditions.

	1 to 9 trees	10 to 49 trees	50 to 299 trees	300 to 599 trees	600 trees or more
5-6 ft. high, 11/16 in. up.	\$.50	\$.45	\$.35	\$.32	\$.30
4-5 ft. high, 9-11/16 in....	.45	.35	.30	.27	.25
3½-5 ft. high, 8-9/16 in...	.40	.30	.27	.25	.22
3-4 ft. high, 7-8/16 in.....	.35	.25	.22	.20	.18
2-3 ft. high, 5-7/16 in.....	.30	.22	.18	.16	.15
2-3 ft. high, light.....	.25	.17	.13	.11	.10
18-24 in. high.....	.20	.14	.12	.10	.09
12-18 in. high.....	.15	.12	.10	.09	.08
6-12 in. high.....	.12	.09	.07	.06	.05

All prices are subject to our usual 5% discount and free delivery of all orders of \$50.00 or more up to 500 miles from our nursery.

EARLY VARIETIES

MAYFLOWER (1) Earliest peach known. Dark red all over; beautiful appearance. Carries well to market. Blooms very late, crop never entirely cut off by late frosts. Size medium, quality good. Semi-cling.

MIKADO (June Elberta) (2) A hardy productive, early, yellow peach ripening about six weeks before Elberta. Blossoms self-sterile and needs to be interplanted. Fruit medium round, semi-cling, attractive yellow flushed with red in color.

RED BIRD (Early Wheeler) (3) Earliness, high color and productiveness make it very valuable. Cling, very large. Creamy white overspread with a bright, glowing red. Good shipper.

GOLDEN JUBILEE (6A) A development of the New Jersey Experimental Station, first offered by us during the Fall shipping season of 1928. Planted and producing in every peach producing section of the United States and Canada and stands without an equal as an early, yellow, freestone peach of exceptional quality. The Golden Jubilee is a second generation seedling of the Elberta crossed with the Greensboro. The tree is unusually hardy. The buds resist low Winter temperatures better than Elberta and open later than Elberta insures a regular crop. The blossoms are self-sterile. The peach is medium to large size and firm. From observation we find that the peach develops better if a well balanced fertilizer is used and in the lighter sandy soils of the Southern Peach producing areas where Jubilee is inclined to set too heavy a crop, better fruit is obtained by thinning the fruit on the tree. As the tree grows older the fruit becomes firmer and develops more naturally. It proved to be the best money-making peach of the South this year, many sales running as high as \$4.00 per bushel and we believe it will continue to gain in favor wherever it is properly cared for. **NO GENERAL PLANTING OF PEACHES IS COMPLETE WITHOUT A LIBERAL AMOUNT OF GOLDEN JUBILEE TREES.**

GREENSBORO (Semi-Cling) (4)

Large yellow with splashes of bright red; highly colored; flesh white, very juicy and of good quality. Hardy, early.

EARLY ROSE (5) White, cling peach of very good color and quality. Our trees are grown from special selected strain as found in a large orchard of North Carolina. This variety is a favorite of the Southern peach grower as it nearly always has a crop and makes them money.

CUMBERLAND (6) A N. J. Station Product. A seedling crossed with Greensboro. The tree is a vigorous grower and as hardy as Carman. The fruit is larger than Belle of Georgia; attractively colored with red, oval in shape. The flesh is white, almost free, firmer and better quality than Carman or Alton. Ripens just before Carman.

CARMAN (6B) Large, creamy white with deep blush; skin tough, making it a good market variety; flesh tender, juicy, fine flavor. Semi-cling.

ROSEBUD (6C) Originated by New Jersey Experiment Station. Tree hardy and sets fruit well. An excellent early white peach of oval medium size completely covered with an attractive red. Flesh medium fine, juicy and melting. A good home market variety. Needs thinning.

RADIANCE (7) A N. J. Station product. A seedling of Belle crossed with Greensboro. A large, oval, white-fleshed freestone similar in form to Belle of Georgia; good quality and color. Ripens with Carman. It is proving a very good variety.

ROCHESTER (8) Large yellow and red peach. Flesh yellow, of fine quality and exquisite flavor. Stone very small and will ship well as Elberta. The tree comes into bearing when very young, is a strong, upright grower, and is hardy as an oak.

MEDIUM EARLY VARIETIES

COLORA (9) Our own introduction of a hardy peach, introduced Spring of 1936. A new frost resistant, yellow freestone peach. This peach originated in Cecil County, Maryland, as a sprout coming from the root of a Brackett tree planted about 1920. It has been producing constantly since about 1925 and came through many years with a full crop when the buds of Brackett on the same tree were entirely frozen out. Second generation trees as well as the original branch have withstood temperatures during the past winters of about 17 degrees below zero, when most other varieties such as Elberta, Hiley Belle, Belle of Georgia, Early Elberta and J. H. Hale were wiped out by these low temperatures. The peach is an attractive yellow, freestone, well-colored and of excellent quality, ripening about 15 to 20 days before Elberta. In size, it is about the same as Elberta, being typical Elberta in shape. We believe the planters will find this a valuable variety for planting in cold areas.

VEDETTE (9A) A product of the Vineland Experimental Station, in Canada, proving unusually well adapted in the various peach growing sections of the United States. A seedling of Elberta, resembling that variety in color and type of flesh, but is more globular in shape, more highly coored, and of much finer quality. The fruit is of large size, yellow fleshed, freestone. The tree is vigorous, very hardy, comes into bearing early and is very productive. The Vedette is proving very satisfactory in trial plantings near Columbia and Clemson, South Carolina, as well as other peach growing sections of the Central and Eastern States. The fruit is firm and a good shipper, ripening about one week after Golden Jubilee. A fine peach that promises to be a real money maker for the Southern Planter as well as other sections, replacing the old Hiley with a larger, better quality, yellow, freestone, productive peach.

HALE HAVEN (10) A product of the South Haven Experimental Station, in Michigan, and is one of the most promising new varieties of recent introduction for a peach ripening after the Golden Jubilee and Vedette. It is a definite improvement over the South Haven, being more resistant to low winter temperatures, always a freestone, has a tough skin, very highly colored and well adapted to large Commercial Plantings. The tree is vigorous, the fruit is large, globular in shape as the Hale, and resembles this variety, being about two weeks earlier than the J. H. Hale and Elberta, and of extremely high quality and a good shipper. We know of no peach we can recommend more highly than the Hale Haven as a Commercial Variety to follow the Golden Jubilee and Vedette and to precede the Elberta season. It now has a wide distribution and is proving its adaptability to most of the peach growing sections from the Carolinas North.

SOUTH HAVEN (10A) Introduced by the South Haven Experimental Station and proving hardy and an excellent peach. The tree is very thrifty and productive. The peach is of Elberta type, ripening from 12 to 16 days before Elberta. While not as good a shipper as Elberta we believe it will carry satisfactory to markets within a radius of 700 miles. It is a freestone, yellow fleshed peach which colors up well and ripens its crop over a period of about ten days which makes it especially desirable for local and roadstand markets. This is an excellent variety to follow the Golden Jubilee and to precede the Early Elberta.

HILEY BELL (Hiley) (11) A medium sized white fleshed freestone peach with beautiful red blush and tough skin. The flesh is juicy and tender. For many years the Souths' greatest early commercial peach.

SLAPPY (Improved) (11A) We are propagating a selected strain of Slappy that we consider superior to the original Slappy variety. The peach seems to average larger, much higher colored, and the tree seems very vigorous, otherwise it is a typical Slappy in every way. The Slappy is a yellow freestone peach of very good quality, ripening about the same time as Hiley Belle. It is especially suitable for nearby markets where quality and appearance count.

VALIANT (11B) A seedling of Elberta introduced by Experiment Station, Vineland, Ont., Canada. A large yellow fleshed, high colored peach, ripening 3 to 7 days after Vedette. Excellent quality fruit, hardy tree and very productive. We recommend it for trial.

ECLIPSE (11C) A self-pollinated seedling of Belle. A dark red, yellow-fleshed freestone peach of firm texture and good flavor, ripening with Hiley. Size equal to Hiley, tree more vigorous. Fruit oval, flesh fine grained; excellent shipper; hangs to the tree well. Recommended as a variety to replace Hiley.

CHAMPION (Free) (11D) Large, round, quite regular; yellowish white, mottled with red on sunny side; flesh white with red at the pit. One of the best in quality and a general favorite of great hardness.

CRAWFORD'S EARLY (11E) Large, roundish, bright yellow with red cheek; flesh yellow, juicy and sweet; quality good.

VETERAN (11F) A cross between Vaughan and Early Elberta; of Canadian origin. The fruit is large, round, yellow fleshed, freestone and superior to Elberta in quality. Ripens a few days after Valiant.

FITZGERALD (Free) (11G) Improved Early Crawford, a bright yellow splashed with red; flesh deep yellow and of best quality; early. Freestone.



EARLY ELBERTA

MID-SEASON VARIETIES

EARLY ELBERTA (12) A great Commercial peach in the Central and Northern peach producing areas where the markets are not so distant and quality is a deciding factor. One of the most beautiful of the Elberta type peaches. A very large, attractively colored, yellow fleshed, freestone peach ripening with Belle of Georgia or from 3 to 8 days before the regular Elberta. The highest quality peach of all the Elberta types grown commercially. The trees are hardy, thrifty, and bear consistently. The deep lemon yellow colored skin, blushed with bright red makes it very attractive and the peach retains a beautiful golden yellow color after being canned. IF YOUR MARKET DEMANDS QUALITY AND BEAUTY PLANT THE EARLY ELBERTA. Our trees are propagated from the old original strain of Early Elberta.

PRIMROSE (12A) A seedling of Belle crossed with Elberta. A Large Yellow fleshed freestone of good quality, ripening with Belle of Georgia. Recommended as a yellow fleshed variety to replace Belle and precede Elberta in home orchards and it is proving worthy of planting on a commercial basis for near-by markets.

BELLE OF GEORGIA (12B) Fruit large size; color red and white; flesh white, firm and highly flavored. This variety has become one of the standard varieties in the big commercial orchards, both north and south. Stands shipping well and brings top prices. Tree a rapid grower; very productive. Perfect freestone.

ELBERTA (13) Without question the greatest commercial peach ever introduced. It has proven its ability to adapt itself to varied climatic and soil conditions throughout the U. S. and Canada, whether the climate is hot or cold, whether the soil is light sand or heavy clay, Elberta can be depended on to give you fine results. There is no prettier peach when grown under ideal conditions.

The tree is hardy, disease resistant, very thrifty and very productive under most conditions. The fruit is large to very large, a freestone, skin a deep golden yellow and highly colored. The skin is tough and the flesh, while tender and juicy, is of such texture that the ELBERTA IS FAMOUS FOR ITS ABILITY TO CARRY TO DISTANT MARKETS. The quality is classed as good, and the slight bitter flavor is preferred by many. It is estimated that 50% of all peaches planted are Elberta. As improved types and varieties are introduced this ratio is lowered but after all is said ELBERTA STILL REMAINS THE WORLDS LEADING COMMERCIAL PEACH. We are propagating our Elberta trees from selected orchards of great bearing records and to the old original type Elberta. This year we cut budwood from 43 year old Elberta trees which had borne 38 years without a crop failure. We know our Elberta trees will give you results.

J. H. HALE (13A) A description will hardly do justice to this fine variety. In size it is one-third to one-half larger than the Elberta and is more highly colored. The skin is deep crimson, smooth, tight, and without fuzz. Flesh is golden yellow, firm, and has a most delicious flavor. The pit separates easily from the flesh. It is exceptionally valuable as a commercial peach, owing to its unusual keeping qualities. Will ship nearly as well as an apple. Fruit ripens a few days before the Elberta, but it will hang on the tree longer. Your collection is incomplete without it. **Note**—The J. H. Hale does not have an entire perfect bloom, and to get best results it should be planted with some other variety.

SHIPPERS LATE RED (Big Red) (14)

A large, very highly colored attractive red, yellow fleshed freestone and good quality peach, of distinct Hale type. Ripens just after Elberta and J. H. Hale. A good shipping peach, extremely productive, very hardy and its beauty and size enables it to bring top prices on the markets. This splendid variety should be planted more extensively as we know of no variety we can recommend more highly for a peach to follow the Elberta. We have the true type Shippers and you should plant some of them this year.

GAGE ELBERTA (14A) A DISEASE RESISTANT BUD SPORT OF THE FAMOUS ELBERTA PEACH. (Excerpts from detailed description given March issue 1929 Journal of Heredity, written by H. W. Anderson and M. J. Dorsey, University of Illinois.)

This splendid peach originated in the orchards of Mr. John A. Gage near Texico, Ill. It has been tested now for a number of years. Possibly its greatest recommendation is the fact that up to the present time it has proven almost entirely immune to bacterium pruni. The tree is very spreading in growth habits. It is equally as thrifty a grower as the Elberta and looks very much like the typical Elberta tree except that the leaves are apparently thicker and darker in color. Gage Elberta blooms from two to four days after Elberta and apparently has a very strong blossom setting a crop of fruit under unfavorable conditions. The fruit is so near the Elberta that only an expert can distinguish the difference. It ripens two to three days

later than Elberta.

This variety is proving well adapted to the Southern conditions in the trial plantings at Columbia and Clemson, South Carolina, and is to be preferred over the Elberta in many respects. We have a nice supply of these in yearling trees this year.

Very favorable reports are coming to us from Ohio, Indiana, and Illinois on the Gage Elberta and some large orchardists are planting it in preference to the Elberta in large quantities.

THE BRACKETT PEACH (14B)

This is a comparatively new variety in some sections, but has been tried and proven one of the most profitable peaches in the South. Its season is about five days after Elberta, with a beautiful orange-yellow skin tinged with carmine. Flesh is a deep yellow and much higher flavored than Elberta. This peach sizes up well under heavy crops and is equal to Elberta as a shipper. A perfect freestone.

MEDIUM LATE VARIETIES

HOPE FARM (15) Introduced by us in 1925 originating on Hope Farm, Bergen County, New Jersey. A large, white-fleshed freestone peach of superior quality. Follows Elberta about five days in ripening. Partially self-fertile. Extremely hardy in bud. Proving a favorite in Northern Districts.

WILMA (15A) A very large, late, yellow freestone peach. Somewhat round in shape, nicely colored and good quality. It ripens from ten days to two weeks after Elberta and is the true type of Wilma peach. Tree hardy, thrifty and productive.

CRAWFORD'S LATE (Free) (16)

Large roundish-oval, yellow with broad red cheeks; flesh yellow with red at pit; melting vinous and very good.

ROBERTA (16A) A variety that is becoming justly popular. Very similar to Elberta in all respects except its season, which is a week to ten days later. Our original buds of this variety came from the orchards of Mr. Roberts, Moorestown, N. J. An excellent variety to follow Elberta season.

IRON MOUNTAIN (17) Free, white, medium to large size, egg-shaped; color pure white, with slight blush; good quality; good keeper; very regular bearer.

LIZZIE (17A) The origin of this peach is somewhat in doubt but it is being grown quite extensively by a few large commercial orchardists of New Jersey and Conn. It is a distinct Elberta type peach, very large, freestone, fine yellow flesh of excellent quality, ripening from 12 to 20 days after Elberta. Tree is thrifty, hardy, heavy bearer of regular crops. Some growers consider it the best of our present list of late peaches.

SALBERTA (18) A large late yellow freestone peach of distinct Elberta type with good color and quality. Very similar to Roberta only ripens a week later. Can be recommended as a late Elberta type peach.

HEATH CLING (Cling) (18A) Very large, creamy white, with delicate red blush; flesh white, slightly red at the pit; tender, juicy and sweet; a valuable sort for canning and one that commands fancy prices in all markets.

VERY LATE VARIETIES

SALWAY (Free) (19) Large, roundish, deep yellow with rich red cheeks; flesh yellow, firm and juicy and sugary; trees are strong growers and bear plentiful crops. A late market sort.

KRUMMEL'S OCTOBER (20) A magnificent peach; the most prolific and best late yellow freestone, which ripens after Salway, or six weeks after Elberta. Medium large, almost round, deep yellow with a dark carmine blush; very firm, fine texture.

The New Sure Crop Nectarine

It has been difficult to find a dependable NECTARINE. We have been so favorably impressed with the SURE CROP that we feel we can recommend it to our patrons. It was imported to this country from New Zealand and is one of the finest if not the finest of recent nectarines tried in this country. The tree is vigorous and productive. The fruit is large, roundish, white, and overlaid with very attractive red. The flesh is firm, tender, free from stone, and very pleasing flavor. Late mid-season.

	Each	10	50
2-3 ft.	\$.50	.30	.25
3-4 ft.60	.40	.30
4-5 ft.70	.50	.40
5-6 ft.75	.60	.50

Unsolicited Expressions of Satisfaction From Those Who Have Planted Bountiful Ridge Grown Stock

"OHIO ORCHARDIST SAYS THE BEST IN 15 YEARS' BUYING EXPERIENCE"

Chardon, Ohio
April 5, 1937

Gentlemen:

I received my shipment of apple trees several days ago. I have been buying apple trees from different Nurseries either directly or indirectly for the last fifteen years and never have received any nicer stock or have them come in, in as nice a condition as these trees have this year.

I think a man should be as willing to give credit where it is due as he is to criticize where its due and that is why I am sending you this letter to let you know the order of trees I received was in excellent condition and was really nicer stock than I expected. Thanking you for your promptness and your fine delivery, I am,

N. T. Sorensen
Hamdben Orchards

"HEAVY, EARLY, PRODUCTION—EVERY TREE TRUE TO NAME"

Hammonton, New Jersey
September 28, 1937

Dear sirs:

Am pleased to state that the Eclipse Trees purchased from you three years ago yielded over a basket to the tree, and every tree was **True to Name**.

W. H. Parkhurst

"100% LIVING IN 500 TREE PLANTING"

Nescopeek, Pennsylvania
June 14, 1937

Dear sirs:

The 500 peach trees that you sold me this Spring were all planted in blasted holes with great care used in their planting and they all grew 100%. There is not one tree that did not grow.

Ray A. Briggs

"PERFECT TREES—NO LOSS—FAIR PRICE—PERFECT SERVICE FROM A FAR WESTERN CUSTOMER"

Green Bay, Wis.

Gentlemen:

The fruit trees received from you during the Spring of 1937 are growing fine. Lost none. Are perfect trees at a perfect price and perfect delivery service.

Adolph Libert

"TREES IN FINE SHAPE"

Berryville, Virginia
March 10, 1937

Dear sirs:

Received the trees several days ago. They were in fine shape and I am very pleased with them.

K. E. Shuler

FOOD FOR THOUGHT — WHAT IS WRONG?

Every progressive business must advertise to increase the sales of their products and their annual appropriation for advertising is from 6% to 10% of the gross volume of business done. They cannot hope to sell their products by merely having them to sell and not telling the buying or consuming public about the merits of their products. **FRUIT GROWING IS JUST AS MUCH A BUSINESS AS THE MANUFACTURING OF RADIOS, AUTOMOBILES AND OTHER MATERIALS, BUT CONTRAST THE ADVERTISING USED TO SELL THESE PRODUCTS AS COMPARED WITH THE SELLING OF APPLES AND OTHER FRUITS.**

Apples are one of our finest health giving fruits and we are not having proper distributions and consumption because:—**SOMETHING IS WRONG SOMEWHERE—WHAT IS IT?—YOU KNOW THE ANSWER?**—or may we suggest some ways of overcoming your marketing problems. Alright, consider these: Discard the Antiques in your orchards, both in trees and varieties—pack a uniform and standardized grade—**REGISTER YOUR BRAND AND ADVERTISE YOUR PRODUCTS. CREATE A DEMAND FOR YOUR FRUIT JUST AS THE RADIO AND AUTOMOBILE MANUFACTURERS DO FOR THEIR PRODUCTS. YOU HAVE MANY NATURAL ADVANTAGES IN YOUR PRODUCT—USE THEM.**

"TREES IN SPLENDID CONDITION. WELL PACKED"

Concord, New Hampshire
April 28, 1937

Gentlemen:

My trees arrived in splendid condition. Am very much pleased with the way they were packed. Never saw any better job. Hope to give you a little more business some time later.

Fred E. Cilley

"TREES GOOD SIZE AND FINE ROOT SYSTEM"

Duncan, South Carolina
January 7, 1937

Dear sirs:

I received the fruit tree order from Mr. W. C. Bishop yesterday. The trees seem to be fine, with good size and fine root systems.

Roy J. Ellison
Agriculture Teacher

"BEST EVER RECEIVED IN HIS SECTION FOR THE MONEY"

Avon, Connecticut
April 30, 1937

Dear sirs:

Nursery Stock received in fine shape. The best ever seen in this section for the money. You will hear from me next year. Thank you for the extras.

Raymond Pattison

"PROVED BETTER THAN ANY OTHER STOCK EVER PURCHASED"

Philadelphia, Pennsylvania
5919 Cedar Avenue
May 26, 1937

Gentlemen:

I did much better with your trees than any others I purchased at any time. Kindly advise me about the Cherries. Many thanks.

J. Webb Vaughn, M. D.

"WELL PLEASED WITH PEACH TREES"

Ransomville, New York
April 12, 1937

Gentlemen:

Received the peach trees and am very well pleased with them.

Paul Helmich

"VERY FINE QUALITY TREES"

Atwater, Ohio
May 25, 1937

Gentlemen:

The trees were very fine quality. Were sorry you could not finish the full order. Will order again next spring. Might want to change variety so will not order now. Many thanks.

Stanley Honeywell



Mr. Homer S. Kemp, Asst. Mgr. of our firm, is standing among some 2 yr. old Jonathan apple trees. They are specimens of vigor and are ready to give you the best of results when planted into an orchard. We have many thousands like these to deliver to our customers this year.

Plum Trees

The Plum, like the Pear and other finer fruits succeeds best in heavy soil with some clay, and being almost entirely free from disease, they can be grown very profitably. The finer kinds are excellent dessert fruits, of rich and luscious flavor; for cooking and canning they are unsurpassed.

	Each	10	100
Largest size, 2 yr., 5-6 ft.....	\$.85	\$7.00	\$60.00
Medium size, 2 yr., 4-5 ft.....	.70	6.00	50.00
Very fine, 1 yr. buds, 4-6 ft.....	.60	5.00	40.00
Medium size, 1 yr., 3-4 ft.....	.50	4.00	35.00

EUROPEAN PLUM

BRADSHAW Very large, dark violet-red, flesh yellowish green; juicy and pleasant; tree vigorous, erect and productive.

FELLEMBURG OR ITALIAN PRUNE

Our most popular Commercial plum. It succeeds under most all climatic and soil conditions. The fruit is dark purple with a dark blue bloom medium to large size, oval, pointed and tapering. The flesh is juicy and delicious and it is very fine for drying and canning. It is fast replacing the German prune in commercial plum orchards. We are glad to say we have a fine lot of one year trees of this splendid variety to offer this year. This plum and the Early Italian prune we are selling make a very profitable combination.

GERMAN PRUNE A valuable Plum of fair quality for dessert, but most esteemed for drying and preserving. Large, long, oval, purple, with a heavy blue bloom; flesh firm, sweet and pleasant, separating from the stone. Moderate to vigorous in growth. September.

IMPERIAL GAGE Large, oval, yellowish-green with marbled green stripes, heavy white bloom, flesh greenish, juicy, melting, rich and best quality; tree upright and vigorous. September.

LOMBARD Medium, roundish-oval, violet red, juicy and pleasant; adheres to stone; valuable market sort, hardy, and adapted to light soils; a reasonably sure cropper.

SHROPSHIRE DAMSON Fruit oval; tree a good grower and enormously productive; fruit of medium size produced in thick clusters or groups, dark purple color, esteemed for preserving.

DAMSON The old-fashioned blue Damson, known to every housewife for the fine jelly and preserves they make. Tree very hardy and prolific bearer.

JAPANESE PLUMS

ABUNDANCE One of the best Japan Plums. Tree is very rapid grower, healthy, and comes into bearing quite young and yields

abundantly; medium size, rich, bright cherry red with distinct bloom and highly perfumed; flesh light yellow, juicy and tender, and excellent quality. Tree vigorous and hardy.

BURBANK Medium to large, orange-yellow, dotted and marbled with red, flesh meaty yellow, sweet and good; valuable for canning and a good market plum. Hardy and most prolific of the Japan varieties.

NEW PLUMS

We offer the following new Plums for your approval. All are worthy varieties and surpass other Plums for the orchardist to grow. Our stock is limited and can only supply 1 yr. trees on Plum roots.

	Each	10
4-5 ft., 1 yr.....	\$.75	\$6.00
3-4 ft., 1 yr.....	.60	5.00
2-3 ft., 1 yr.....	.50	4.00

STANLEY A cross between Agen and Grand Duke. The fruit is of the prune type, excellent for cooking or eating out of hand. The tree is healthy, vigorous and produces full crop annually. Fruit is large in size, dark-blue with heavy bloom; flesh, greenish-yellow, juicy, fine-grained, tender, firm, sweet, pleasant; quality, good to very good. Freestone. Mid-season. Stanley and Hall are two of the New York Experiment Station's prize plums. One year old trees only.

EARLY ITALIAN PRUNE A Typical Italian prune ripening about two weeks before the regular Italian prune, same size, quality and color. Every grower of plums knows how much it would mean to them to be able to have the Italian prune two weeks earlier and that is what you have in this plum. It should prove a money maker. Can supply in one year trees only.

Apricot Trees

All Varieties, Fine 4 to 5 Feet Trees
60c each; \$5.00 for 10

ALEXANDER (Russian) Medium to small, light orange, yellow flushed with red; flesh tender, juicy, sweet and good quality; hardy; very productive. July.

MOORPARK One of the largest; orange-yellow with numerous specks and dots; flesh yellow, sweet, juicy and rich. August.

EARLY GOLDEN A good variety; very large deep golden yellow, and fine in quality.

SUPERB Rated by many as the best of our older and widely planted varieties of apricots. The tree is large, very thrifty and hardy and is extremely productive. Very good quality. Fruit is beautiful yellow with slight blush; flesh firm and solid.

**PLANT CHERRIES
FOR GREATER
PROFITS**



The Montmorency Cherry. Our Greatest Commercial Cherry.

Any well drained soil will be found to be adapted to the growing of cherries.

Write for special prices if you are interested in 100 trees or more. We will give you the advantage of any market changes if you do this.

Again our supply of Cherry is very limited. If interested in large quantities order early. Our Sweet and Sour Cherry Trees are as good as it is possible to grow.

	Each	10	100
Large size, 2 yr., 11/16" caliper.....	\$.85	\$7.00	\$65.00
Medium size, 2 yr., 9 to 11/16 caliper....	.70	6.00	55.00
Small size, 2 yr., 7 to 9/16" caliper....	.60	5.00	45.00
Extra fine, 1 yr., 3 1/2 ft. up, 1/2" up....	.70	6.00	55.00
Medium, 1 yr. 3 ft. up, 7/16" caliper..	.60	5.00	45.00
Small size, 1 yr., 2 ft. up, 5/16" caliper .50	4.00	35.00	

SOUR CHERRIES

10c less per tree on above prices

ENGLISH MORELLO Easily grown, generally producing a heavy crop. Fruit dark red, quality good; rich, acid flavor; late. Hardy for extremely cold latitudes. August.

EARLY RICHMOND One of the most valuable and popular cherries, unsurpassed for cooking purposes. It is the good old variety that yields such marvelous crops in the gardens. The most hardy of all varieties, uninjured by the coldest winters.

LARGE MONTMORENCY This is the best of all the sour varieties of Cherries. There is a greater demand on the market for this Cherry than any other. The trees are the cleanest and best growers and are less subject to disease, less affected by wet weather, and are the best bearers of the best fruit of all other sour varieties. No matter how unfavorable the season may be, Montmorency can be depended upon for a full crop. The Montmorency is a good shipper, very attractive looking, and always brings good prices.

SWEET CHERRIES

SENECA Our earliest good sweet cherry, ripening two weeks before Black Tartarian. The Cherries resemble those of Black Tartarian—large, round-cordate, purplish black, with juicy, melting flesh and a rich, sweet flavor; the pit is free and the skin does not crack. The tree is vigorous, productive, and has upright spreading habit of growth. Introduced by N. Y. Agriculture Experiment Station.

BING This valuable black cherry succeeds everywhere. Flesh very solid, flavor of the highest quality, a fine shipping and market variety. July.

BLACK TARTARIAN Very large; bright purplish black; half tender; juicy, very rich. Tree a remarkably vigorous and erect grower, and an immense bearer. One of the most popular varieties in all parts of the country. June.

GOVERNOR WOOD Large, heart-shaped; light yellow, mottled light red, juicy, sweet and rich. Tree vigorous, productive; forms a round head. An old variety still a favorite in many regions.

LAMBERT One of the largest of all Cherries. It is purple-red, firm and rich. Every year sees an enormous crop, and the tree not only grows well, but is proof against insect and fungous attacks.

NAPOLÉON BIGGAREAU (Royal Ann) A beautiful cherry of large size; pale yellow with bright red cheeks; flesh firm, juicy and sweet; one of the best for market and canning. Hardest of light yellow cherries and deservedly popular.

SCHMIDTS BIGGAREAU The fruit is of very large size, of deep mahogany color. Flesh dark, tender, very juicy, with a fine rich flavor. Fruit grows in clusters. Is an excellent shipper. July.

WINDSOR Tree upright, vigorous and a rapid grower, fruit large, roundish, oblong, very firm and juicy; flesh pinkish and sometimes streaked; quality very good; a productive bearer; has attracted attention owing to its large size and dark color; almost black. July.

SWEET SEPTEMBER CHERRY

There is no previous record in the history of Horticulture of a Fall-bearing cherry until accidentally discovered by an amateur Horticulturist in Northwestern Ohio. The sweet cherry tree, for some unknown reason, ripens in September instead of June. The tree blossoms at the same time as other standard varieties and is apparently harder in the bud than average sweet cherries. The fruits are an attractive medium dark red similar to the Windsor, deliciously sweet, excellent for eating fresh or canning. It ripens in Ohio from about September first until snow flies, which makes it valuable for roadside markets, as the fruit can be sold over a long period of time. It is a remarkable fact that the young trees produce fruit two or three years after planting and continue there-after to bear full crops. The original tree has produced a crop of fine fruit year after year without being sprayed. Apparently, the tree is free from rot, leaf spot, and curculio injury.

	each	10 rate	25 rate up
3-4 ft.....	\$1.50	\$1.45	\$1.40

Fig Trees

Any home garden should have some figs. Sprouts and suckers should be kept down and the tree pruned so the trunks are clean for at least two feet from the ground. They will bear better and stand more cold if treated this way.

MAGNOLIA FIG One of the hardiest species, doing well where the winters are not too severe. Fruit very large and of rich straw color. Fruit begins to ripen the last of June and continues to put on new fruit until frost. 2 to 3 feet, 80c each; \$6.00 for 10; \$50.00 for 100.

Quince Trees

All Varieties, 2-year, 4 to 5 Feet, 5-8 inch Caliber
90c each; \$8.00 per 10

2 yr. 3-4 ft., 80c each, \$6.00—10

ORANGE Roundish bright golden yellow, very large, fine grained, fine quality. Best for cooking. Firm, will stand shipping.

CHAMPION Fruit very large, fair and handsome. Bears abundantly while young; flesh cooks as tender as an apple without hard spot and cores; flavor delicate; quince taste.



CHAMPION QUINCE

PEAR TREES

Pear trees are not plentiful anywhere this year and we would advise that you make your reservations early.

	Each	10	100
Large size, 2 yr., 5-6 ft.....	\$.35	\$7.00	\$60.00
Medium size, 2 yr., 4-6 ft.....	.70	6.00	50.00
Smaller size, 2 yr., 3½-5 ft.....	.60	5.00	40.00
Large size, 1 yr., 4-5 ft.....	.60	5.00	40.00
Medium size, 1 yr., 3-4 ft.....	.50	4.00	35.00

SUMMER PEARS

BARTLETT Large size. Golden yellow when ripe, with a beautiful blush next to the sun. Buttery, very juicy, and highly flavored; tree a strong grower, bears early and abundantly; very popular. August and September.

CLAPP'S FAVORITE A large, fine pear, resembling the Bartlett; pale lemon-yellow with brown dots and a fine texture, melting, buttery, juicy, with a delicate flavor; tree hardy and productive. August and September.

WINTER AND AUTUMN PEARS

ANJOU (Buerre d'Anjou) A large, fine pear, buttery and melting, with sprightly flavor; tree a fine grower and very productive. One of the best. October to January.

BUERRE BOSCH Greatly esteemed. A large, yellow pear; flesh white, rich and delicious; has long stem which allows it to sway in heavy winds without dropping. Tree slow grower, but most productive; keeps until Christmas.

DUCHESS D'ANGOULEME Very large, greenish-yellow, sometimes russeted; makes a beautiful tree. A heavy bearer, buttery, melting and sweet. A depend-

DWARF PEARS

The cultivation of Dwarf Pears is very profitable, and comes into bearing usually the second or third year, and bearers and to give the best satisfaction as dwarfs:

Bartlett	Flemish Beauty	Clapp's Favorite	Duchess	Seckel
(For description of these varieties see Standard Pear).				
All Dwarf Pears 2 yr., ⅝" 4 to 5 ft.				
Prices Dwarf Pears: 80c each; \$7.50 for 10.				

NUT TREES

All our Pecan trees are grafted so as to give uniform type pecans and bring them into bearing very young. We do not recommend seedling pecan trees at any price.

SCHLEY PECAN Of all the varieties of this luscious and valuable nut family, the Schley and Stuart stand at the head of the list. The Schley is a thrifty, strong grower; nuts long, well filled, with a very thin paper-like shell. Trees 3 to 4 feet, \$1.25 each; trees 2 to 3 feet, \$1.00 each.

STUART PECAN Probably the best known and most valuable of all the Pecans. Extremely hardy and a strong grower. Nuts of good size and well filled. Shell very thin and easily opened. Trees 3 to 4 feet, \$1.25 each; trees 2 to 3 feet, \$1.00 each.

SUCCESS Nut large and oblong. Shell thin, parting freely from the kernel which is plump and of fine quality. Bears young and consistently. Widely used for polonization purposes in commercial plantings of Schley and Stuart. Trees 3 to 4 feet, 1.25 each; trees 2 to 3 feet, \$1.00 each.

BENGE BLACK WALNUT A special selected variety of Black Walnut having unusual merits; being very large and having few divisions in the nut. These trees are grafted on Black Walnut seedlings. 3 to 4 ft. trees, \$1.00 each; \$9.00 for 10 trees.

BLACK WALNUT The common Black Walnut is very productive in nuts which are liked by many. Price, 5 to 6 feet, 80c each; 10 for \$7.00; 4 to 5 feet, 70c each; 10 for \$6.00; 3 to 4 feet, 50c each; 10 for \$4.00.

THOMAS BLACK WALNUT One of the largest and finest Black Walnuts yet found and of the best quality. Kernels large, light-colored; nearly all crack out in whole halves. Tree extremely vigorous and hardy. All trees we sell of this variety are grafted so they reproduce true-to-type. Prices: 3 to 4 ft., \$1.00 each; \$9.00 for 10; 4 to 5 feet, \$1.25 each; \$11.00 for 10.

able cropper, and good market sort. October and November.

KEIFFER The old reliable pear grown in all sections of the U. S. and Canada. The tree is practically immune to blight, very thrifty and bears constant heavy crops. The fruit is large to very large, golden yellow, often blushed, juicy and one of the best pears we have for shipping to distant and foreign markets. It is said, where no other pear will succeed plant the Keiffer and it has been very profitable in recent years.

FLEMISH BEAUTY Large, juicy, melting and rich, a strong grower and good bearer; very hardy but prefers sunny situation. September and October.

SECKEL Small, rich, yellowish-brown; one of the best flavored pears known; very productive. September and October.

SHELDON A large, round, russet and red pear of very rich, fine quality; melting and delicious. Tree vigorous, bears well. October.

WORDEN-SECKEL This beautiful and delicious pear attracted wide attention when introduced recently. In quality it is rated very high. In size it is much larger than Seckel. It is shaped like Bartlett, but is not as large. October.

NEW PEARS

GORHAM Resembles Bartlett in size, color, shape, only ripens 2 weeks later. The flavor is sweet with very marked and pleasing aroma. The flesh is white, tender, buttery and juicy. The trees are vigorous and productive and very resistant to blight. 5c per tree extra.

OID Ripens in December at Geneva, N. Y. The fruit is large and resembles Bartlett. The flesh is fine grained, tender, nearly white, sweet and good in quality. Ovid promises to be a splendid late pear. 5c extra per tree.

The trees are low-headed and the fruit is easily handled. We recommend the following varieties to be good growers



BLACK WALNUT

ENGLISH WALNUT

ENGLISH WALNUT Tree Valuable for its fruit and shade; all our trees are grafted, either the Franquette or Mayette varieties. The nuts are thin shelled with full meated kernels of delicious flavor. Tree is hardy and productive. Nut groves are proving real investments and are a source of pleasure as well as income. Plant some of our selected grafted varieties for quick and satisfactory results. State variety desired. 3 to 4 ft., \$1.00 each; \$9.00 for 10 trees; \$70.00 for 100.

AMERICAN FILBERT (Hazel Nut) The family favorite, having attractive bush, yielding abundant crops of tasty round nuts. Bears young. Does not grow large tree. 2 to 3 feet plants, heavy, 60c each; 10 for \$5.00.

BARCELONIA FILBERT One of the newer varieties, widely grown in the Northwest for market purposes. Larger than our native American Filbert. 2 to 3 ft., 70c each; \$6.00 for 10.

DuCHILLY FILBERT Another very prominent variety coming to us from the Northwest where it is widely grown for market purposes. Nuts very large. We recommend this variety very highly. 2 to 3 ft., 70c each; \$6.00 for 10.

BLUEBERRIES

A new and delightful fruit becoming more popular and more profitable. Possibly no small fruit of dessert quality will give as much return in satisfaction and money as the Blueberry when properly grown. We list below what we consider the finest of all varieties being offered today.

Blueberries require an acid soil containing an abundance of peat or other partially rotted vegetable matter. They need a moderate supply of soil-moisture, and good drainage so that the roots can get air during the growing season.

Where natural Blueberry soil is not available ideal conditions can be created by mixing with the surface soil a liberal quantity of peat moss or partially rotted leaves or sawdust or chip dirt from an old woodpile. If your soil is clay the addition of sand will benefit it. Plants should be mulched with leaves, straw, lawn clippings or peat moss to conserve moisture. This mulch should not be removed or dug into the soil. Plants should be planted from three to four feet apart. Two varieties should be ordered to give proper pollenization.

Complete cultural direction mailed upon request.

RANCOCAS The bush of slender, vigorous, upright habit rarely surpasses five feet in height. The winter twigs are a dark red. The berries are somewhat larger than those of Rubel and begin to ripen several days earlier.

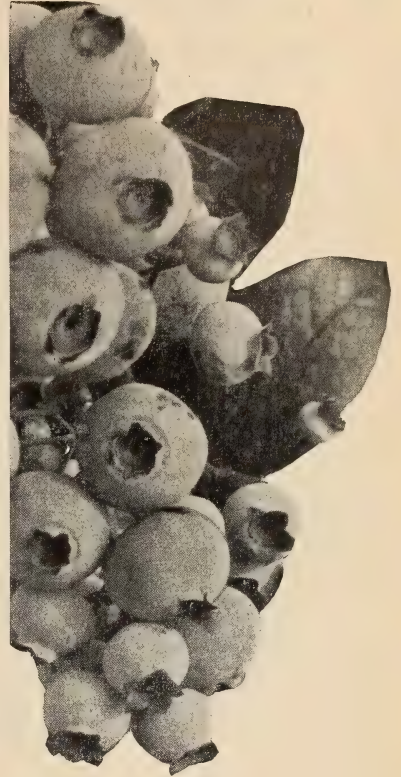
CONCORD The bush is of upright habit and at maturity exceeds six feet in height. The young growth is bright red in winter. The berries are large, frequently reaching three-quarters of an inch in diameter. They usually ripen a few days earlier than Rubel and are fine in flavor and appearance.

JERSEY The bush is of vigorous habit and grows very large. The winter color of the young growth is a light red over golden brown. The berries are the largest of any here listed, of a very light blue color and ripen about the same time as Bubel.

RUBEL Well developed bushes stand six feet or more high, vigorous and beautiful. The stems are slender, but sturdy. The winter color of the young wood is a rich red. The large berries are of a fine blue color. Planted extensively for commercial fruit production.

PIONEER (Coville Hybrid 620-A) Named by Dr. Coville of the U. S. Department of Agriculture. The bushes are stocky, seldom exceeding 4 feet in height with a tendency to be broad rather than high. Its stems are stout and stiff and the winter color of the young growth is a delightful red. Pioneer produces heavy crops of berries close set in the cluster. They are larger than Rubel; of medium blue color and fine flavor.

Prices, all varieties: 10 to 12 inch, B&B, \$1.25 each; \$10.00 for 10; 15 to 18 inch, B&B, \$1.75 each; \$15.00 for 10.



MARTHA WASHINGTON

Asparagus

Asparagus culture, where you have land that is adapted to growing it, has proven to be one of the most profitable of the farm products. It should be planted on loamy soil for best results. It does not require a lot of attention or expense in cultivation. An asparagus bed will develop in a surprisingly short time and will last for several years.

We advise that you plant the rust-resistant varieties known as Washington, for they have proven the most profitable. In fact, the demand for the other varieties is so negligible that we are only growing the Washington strains. They are the best for either home or commercial planting. A well cared for asparagus bed of a few thousand plants can always be depended on to bring you a good return and give you money when you need it during the early spring months.

Prices all varieties:	25	100	500	1000	5000
Strong 1 yr., No. 1 roots.....	\$.40	\$1.00	\$3.00	\$5.50	\$25.00
Strong 2 yr., No. 1 roots.....	.60	1.50	4.00	7.00	32.50
Strong 2 yr., No. 2 roots.....	.40	1.00	3.00	6.00	22.50
Giant Mary Washington, 1 yr.	.50	1.25	3.50	6.50	30.00
Giant Mary Washington, 2 yr.	.70	1.75	4.50	8.00	37.50

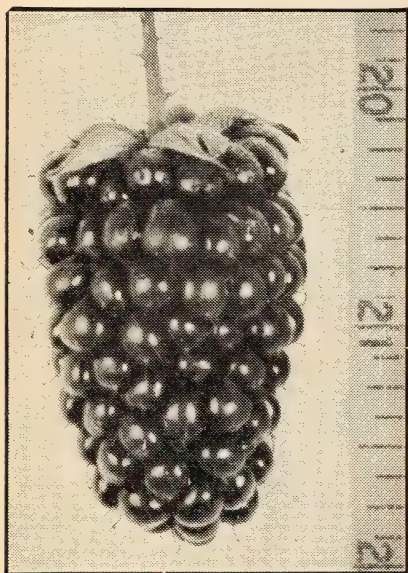
MARTHA WASHINGTON Of same hardy characteristics as the Washington Pedigreed, only considered an improvement of that variety. Very rust-resistant. The stalks are large, dark green, with a heavy purple overtone. The tips are tight and firm and do not open until well out of ground.

MARY WASHINGTON This is considered one of the best of the Washington kinds of Asparagus. It starts early and produces a heavy crop of very large, tender asparagus. Green in color and very good quality.

Shoemaker's Strein Giant Mary Washington This strain of Washington asparagus seems to produce larger stalks, and will continue to produce heavier and over a longer period in the spring cutting season than any other type of Washington Asparagus. We can supply this variety in both one and two year roots and recommend the asparagus growers try this type. It is very Rust Resistant.

PLANT SMALL FRUITS

THE GROWER OF SMALL FRUITS LEADS IN FARM INCOME FOR 1937.
GRAPES, RHUBARB AND ASPARAGUS, PROVED
PLANT A FEW ACRES THIS YEAR AND INCREASE YOUR



The NEW BOYSENBERRY

SAID TO BE THE LARGEST and FINEST VINE BERRY EVER INTRODUCED. The **BOYSENBERRY** is a new variety produced by crossing blackberries, raspberries, and Loganberries. The flavor is a very pleasing blend of these varieties. It has few and soft seeds. The plant is very vigorous and hardy, coming through in good condition, without injury, in temperatures as low as 19 below zero. **THE BERRIES ARE EXTREMELY LARGE, MANY OF THE BERRIES GETTING MORE THAN 2 INCHES LONG and OVER 1 INCH IN DIAMETER.**

Unlike many kinds of large fruit, the **BOYSENBERRY** consistently produces heavy crops. **IT COMES INTO GOOD BEARING THE NEXT YEAR AFTER PLANTING AND ONE PLANTING LASTS FOR MANY YEARS.** It is a vigorous grower and should not be planted closer than six feet apart and succeeds better when trained on wires similar to grapes. **THE FRUITING SEASON IS LONGER THAN MOST VINE BERRIES LASTING ABOUT TWO MONTHS. IT IS NOT UNUSUAL TO PICK 20 BASKETS OF BERRIES TO THE PLANT THE SECOND YEAR AFTER PLANTING.** The plant seems to be especially resistant to drouth conditions. **WE RECOMMEND THAT YOU GIVE THIS WONDERFUL BERRY A TRIAL FEELING THAT IT WILL PROVE A VALUABLE ADDITION TO YOUR PRESENT LIST OF SMALL FRUITS.**

PRICES: 20c each; 10 plants for \$1.50; 50 plants for \$5.00; 100 plants for \$9.00; 500 plants for \$35.00; 1000 plants for \$80.00. All prices are for strictly first class 1 yr. plants.

GRAPE VINES

Give List For Letter Quotations On Large Quantities

	Each	10	100	1000
Concord, 2-yr., No. 1.....	\$.20	\$1.00	\$7.00	\$50.00
Concord, 1-yr., No. 1.....	.15	.80	5.00	40.00
Moore's Early, 2-yr., No. 1..	.20	1.50	10.00	80.00
Moore's Early, 1-yr., No. 1..	.15	1.25	7.00	50.00
Niagara, 2-yr., No. 1.....	.20	1.00	7.00	60.00
Niagara, 1-yr., No. 1.....	.15	.90	6.00	50.00
Fredonia, 1-yr., No. 1.....	.25	2.00	15.00	
Sheridan, 1-yr., No. 1.....	.25	2.00	15.00	
Delaware, 2-yr., No. 1.....	.25	1.50	10.00	
Delaware, 1-yr., No. 1.....	.20	1.25	8.00	
Worden, 2-yr., No. 1.....	.25	1.50	10.00	
Worden, 1-yr., No. 1.....	.20	1.25	8.00	
Catawba, 2-yr., No. 1.....	.20	1.50	10.00	
Catawba, 1-yr., No. 1.....	.15	1.25	7.00	
Agawam, 2-yr., No. 1.....	.25	1.50	10.00	
Agawam, 1-yr., No. 1.....	.20	1.25	8.00	
Caco, 2-yr., No. 1.....	.40	3.00	20.00	
Caco, 2-yr., No. 2.....	.30	2.00	16.00	
Moore's Dmd., 1-yr., No. 1..	.15	.90	6.00	

MOORE'S EARLY (Black) Early black; similar to Concord in looks and quality; and ripens about two weeks earlier. Has a peculiarly sweet flavor all its own. Vines are healthy, vigorous, hardy and heavy bearers.

NIAGARA Occupies the same position among the white varieties as Concord among the black. Bunch and berries are large, greenish-white changing to pale yellow when fully ripe. Skin thin but tough; quality much like the Concord.

AGAWAM Bunch large, berry large, reddish, brown, tender, vinous and of excellent flavor. Very vigorous and productive. Vine hardy and one of the best in its class.

DELAWARE One of the highest qualified grapes in cultivation. Extremely hardy. Adapts itself readily to various soil conditions. Matures its crop early. Has very attractive appearance. Keeps and ships well and is immune to black rot. Clusters are well shouldered, compact. Berries are uniform, light red in color and firm.

CONCORD The standard commercial grape. The old reliable Concord—the standard by which all the other black grapes are judged—a lifetime money-maker. Whatever other varieties are grown, no vineyard or arbor is complete without a liberal planting of Concord. Our Concord vines are well rooted and are guaranteed to give perfect satisfaction, producing huge bunches of deepest purple grapes of very finest flavor.

CATAWBA Bunches medium, shouldered; berries large, deep coppery-red, becoming purple when ripe; flesh somewhat pulpy; juicy, sweet, aromatic and rich.

WORDEN Seedling of the Concord, which it greatly resembles in appearance and flavor, but the berries are larger. The fruit is said to be better flavored and to ripen several days earlier. These qualities will give it the foremost range among native grapes.

CACO (Red) This new grape is of the highest quality, being so rich in sugar and excellent flavor it can be eaten two weeks before it is ripe. The grapes are very large, bunches good size, compact and good form. The vines are strong growers, hardy and prolific. Ripens one week before Concord.

FREDONIA Gives promise of being the earliest good black grape. The vine is vigorous, hardy, and productive, and ripens its fruit 2 weeks earlier than Worden. The clusters are medium size and compact. The berries are large and round; the skin is thick and tough; the flesh is juicy, solid but tender and very good quality.

SHERIDAN A promising late-keeping grape to extend the Concord season. Under similar conditions the plants are just as hardy, vigorous, healthy and more productive than Concord. The bunches are large and compact; the berries are large and very firm; the flavor is sweeter and richer than Concord. Ripens week later than Concord.

MOORE'S DIAMOND An early white grape and a favorite in many sections. Berries are medium size, good quality and excellent for grape juice. Very hardy and productive.

FOR INCREASED PROFITS

STRAWBERRIES, RASPBERRIES, BLACKBERRIES, BOYSENBERRIES,
A DEPENDABLE CROP FOR EVERY GROWER.

INCOME NEXT YEAR AND THE YEARS TO FOLLOW.

BLACKBERRIES

Blackberries are among the best known and most valued of our berries. No fruit of any kind is more wholesome. A liberal use of berries and other good fruits will save doctor bills. Blackberries should be planted in rows 6 to 7 feet apart, 3 to 4 feet in the row. Keep the ground light, rich and clean, and pinch the canes back when they have reached four feet in height.

Prices—Strong Rooted Cutting Plants, All Varieties:
\$1.00 per 25; \$2.50 per 100; \$20.00 per 1000

BLOWERS Large size, jet black, good shipper, best quality and unexcelled productiveness are the main characteristics of this splendid new sort. Most widely planted upright growing commercial blackberry of today.

ELDORADO Vine is vigorous and hardy; berries are very large, black, borne in clusters; ripens well together; sweet, melting and pleasant to the taste.

ALFRED One of the finest of all early Blackberries. Very productive, superior in quality, berries very large, and practically free from seed, very juicy. Plant is a thrifty grower being extremely hardy; bears young. Suitable for home or market use.



ACME THORNLESS YOUNGBERRY

We are glad to offer our patrons a thornless type of youngberry that promises to entirely take the place of the old type of youngberry. It is a very vigorous grower; an abundant bearer and equally as large or larger in most cases with the added advantage of

being able to harvest your berries with your bare hands. This variety is covered by U. S. Plant patent No. 4 and therefore is sold only for planting. The youngberry is becoming more and more popular and we believe every producer of small fruits should have some of them.

	Tip Plants	Transplants
6 plants \$ 1.00	(prepaid) \$ 2.65
12 plants 1.75	(prepaid) 5.00
25 plants 3.00	(prepaid) 8.25
50 plants 3.95	(not prepaid) 13.50
100 plants 6.95	(not prepaid) 22.50
200 plants 12.75	
500 to 1000	@ \$5.00 per 100	

Complete cultural methods sent upon request.

DEWBERRIES

The dewberry is a dwarf and trailing form of the Blackberry. The fruit is highly prized as a market fruit owing to its large size and fine quality. Set the plants two feet apart in the row and cover in winter with coarse litter. Should be mulched in the spring to keep them off the ground.

LUCRETIA Perfectly hardy and remarkably productive; said to be the best of this class of fruit; ripens early, is often 1½ inches long by 1 inch in diameter; sweet, luscious and melting. This variety is highly recommended.

AUSTIN'S DEWBERRY Fruit very large. Enormous bearer. The most productive market variety we have ever grown, and is 8 to 10 days ahead of any other. Strong and vigorous grower.

Price, No. 1 Plants—75c per 25; \$1.50 per 100;
\$10.00 per 1000.

"TREES IN FINE SHAPE"

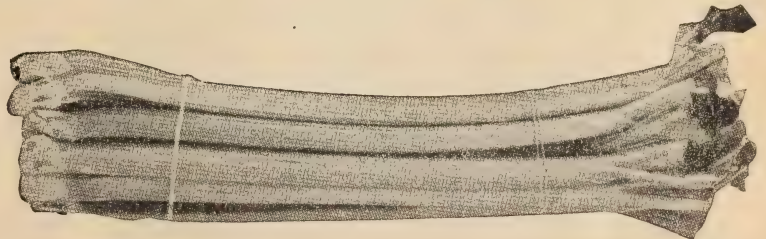
Berryville, Virginia
March 10, 1937

Dear Sirs:
Received the trees several days ago. They were in fine shape and I am very much pleased with them.
K. E. Shuler

Rhubarb

MYATT'S LINNAEUS

The market growers choice Rhubarb is today proving one of our most profitable truck crops. Easy to grow it brings great returns and no truck farm or garden is complete without Rhubarb.



Those who have never grown this variety, which is of superior quality, will hardly recognize the old "Pie Plant". It is an early, tender variety, without being in the least tough or stringy, with a mild sub-acid flavor and can be cut well into the summer. It leads in prices on our large commercial markets. We offer 2 grades one year whole root plants this year which are ideal crowns to give quick lasting results.

	Each	10	25	50	100	500	1000
Strong 1 yr. whole roots, 1 to 1¼ in. caliper.....	\$.10	\$.70	\$ 1.50	\$ 2.50	\$ 4.00	\$ 16.00	\$ 30.00
Strong 1 yr. whole roots, ¼ to ½ in. caliper.....	.12	.90	1.90	3.25	5.00	20.00	37.50

PLANT SMALL FRUITS

Whether you are a large grower or a small grower, Small Berries, Asparagus

RASPBERRIES

A ready market can always be found for raspberries. When well cared for they are sure to return a good profit. A patch of raspberries should be renewed about once in five years as by that time the quality of the berries deteriorates and the fruit becomes small. The plants should be well manured and cultivated at frequent intervals. In training allow only a few canes to grow from each plant, cutting away all suckers to throw the strength into the stalk for bearing; all old canes should be removed immediately after the fruit is all picked. Cut out old and weak shoots each year.

Prices of Raspberry plants except as noted. Every plant well rotted and triple inspected. They must be right. \$1.00 for 25; \$1.50 for 50; \$2.50 for 100; \$7.00 for 300; \$11.00 for 500; \$20.00 for 1000.

ST. REGIS Everbearing (Red) The new everbearing variety. It gives a crop of fruit all summer and autumn, fruiting on the old canes in generous quantities until late in August. By this time berries begin to ripen on the young canes and continue until late in autumn. Berries are a bright crimson of large size and of surprising quality; sugary with raspberry flavor. Without an equal and the only dependable everbearing Raspberry.

CUMBERLAND The most widely planted commercial black raspberry. A universal favorite. The largest of all black caps; healthy, vigorous grower, throwing up stout, well-branched canes that produce immense crops of magnificent berries. Fruit very large, firm; quality about the same as Gregg. 75c for 25; \$1.25 for 50; \$2.25 for 100; \$6.00 for 300; \$8.50 for 500; \$16.00 for 1000.



A bunch of 25 Latham 1-year plants. Strong, disease-free canes and abundance of roots, dependable plants that will give results. The kind we are filling your order with this year.

LATHAM

Leads all Red Raspberries in commercial planting and profits to the grower

The new mosaic free hardy red raspberry. Without question Latham is the most profitable Red Raspberry for commercial planting. It is absolutely hardy. It cannot be surpassed in productiveness, out-yielding even Cuthbert. Due to its rich brilliant red color it sells readily on market stands, and in addition is a delightful table berry and almost perfect for canning. The berries are large, round and unusually firm, exceptionally well suited for shipping to distant markets. It ripens evenly over a very long season.

We have some of the finest Latham plants we have ever grown. All 1-year No. 1 plants. Prices: 90c for 25; \$1.50 for 50; \$2.50 for 100; \$6.75 for 300; \$10.00 for 500; \$19.00 for 1000.

CUTHBERT (Red) Large, bright scarlet - crimson, excellent quality, firm, juicy, and refreshing; vigorous grower, hardy and productive. Very popular as a home garden and market berry.

FLAMING GIANT (Ohta)

A comparative new red raspberry becoming more and more popular because of its brilliant red color and good quality. It can well be classed among the hardest red raspberries. The fruit is large, firm-fleshed and an excellent shipper. It will continue favorably with Latham in production. Prices: \$1.50 for 25; \$2.50 for 50; \$5.00 for 100; \$12.00 for 300; \$15.00 for 500; \$25.00 for 1000.



THE RELIABLE CUMBERLAND RASPBERRY

FOR INCREASED PROFITS

and Rhubarb will guarantee you an income. Plant our triple inspected stock.

CHIEF

PROVING WITHOUT QUESTION THE LEADING EARLY RED RASPBERRY THROUGHOUT THE COUNTRY

Ripening ten days before Latham, being equally as productive as the Latham and of better quality than the Latham, it should be in every small fruit grower's planting. By using the Chief for an early red raspberry, Newburg for a mid-season and Latham for a late berry you have a combination that is bound to give you real profits. The Chief originating in the North is extremely hardy, very vigorous and especially resistant to mosaic. Our plants are unusually fine for the Chief this year and our prices are the same as for the Latham. Plant liberally of them. Prices: 90c for 25; \$2.50 for 100; \$6.75 for 300; \$10.00 for 500; \$19.00 for 1000.



CHIEF RASPBERRY

NEW LOGAN RASPBERRY



NEW LOGAN

A Leader and the Most Dependable Early Black Raspberry

One of the New Logan's outstanding characteristics is its resistance to mosaic and other raspberry diseases. It seems to outclass all other black raspberry varieties in this respect, and this is one of the primary reasons why it is gaining popularity among the growers who depend on black raspberries for their livelihood. The berry ripens one week earlier than Cumberland. It is a heavier yielder and the glossy black berries are as large as that variety. It holds well through drought and in fact the last picking has always proven as fresh and free from seediness and tendency to crumble as the first.

Another good feature of the New Logan is that it ripens its crop quickly and does not string out over a period of time, thus making picking much easier.

A thrifty grower, and, although not as upright as Cumberland, our growers find this no objection if the summer shoots are topped higher than normal.

Prices, No. 1 Tips—90c for 25; \$1.25 for 50; \$2.25 for 100; \$6.00 for 300; \$8.50 for 500; \$16.00 for 1000.

BLACK BEAUTY

An unusual thrifty and disease resistant seedling Black Raspberry which originated on the farm of Ross Cowen, Green County, Ohio, where it has been grown as a commercial variety for several years. This splendid variety was introduced by a prominent Ohio Nurseryman spring of 1932. It surely is a step forward in producing mid-season black Raspberries and gives promise of replacing to a degree the Cumberland which has been the standby for years. It is a very thrifty grower and should be planted about 5 ft. apart. You will find it hardier than Cumberland and equally as productive as the best Cumberlands. The berries are large, firm, black, with very little greyish bloom and the berry does not crumble. Up to the present time it has shown no mosaic, curl or streak although planted close to infected beds. It has shown itself to be unusually resistant to Anthracnose which alone should recommend it.

\$1.00 for 25; \$1.50 for 50; \$2.50 for 100; \$7.00 for 300; \$11.00 for 500; \$20.00 for 1000.

NEWBURG

The great New Red Raspberry. It has everything to recommend it. Fruit is large as Latham. Better quality than Latham. Plants very vigorous and disease resistant and hardy. Mid-season. Introduced by New York Fruit Testing Association. It is rapidly becoming one of our leading commercial varieties.

We have put the price down where you can buy and plant. Our trial blocks came thru with extremely heavy production this year.

Newburg, a cross between Newman and Herbert, seems to be the most promising variety in the station collection. The fruit is very large, very firm, does not crumble, and is superior to Latham in quality, but inferior to Cuthbert in that respect. The color is a bright, attractive red. In keeping and shipping quality it has no superior. The plants are vigorous, hardy, and very productive, in fact, the weight of the fruit is so great that the canes are often bent to the ground. The fruit is borne out in the open where it may be readily picked. It is necessary to support them with wire along each side of the row.

Prices: \$1.00 for 25; \$1.50 for 50; \$2.50 for 100; \$7.00 for 300; \$11.00 for 500; \$20.00 for 1,000.

"RHUBARB PLEASURES CUSTOMER"

Newfield, N. J.
March 15, 1937

Gentlemen:

Your shipment arrived in first class condition. Am very pleased with appearance of Rhubarb Roots. Thank you for the shrubs.

C. F. Coffin



STRAWBERRIES

An Early Profit-Maker For Every Farm



IN THE YEARS OF LOW FARM INCOME STRAWBERRIES HAVE PROVEN THE GROWERS' MOST DEPENDABLE SOURCE OF INCOME. THEY REPRESENT A LOW INVESTMENT COST AND ARE KNOWN AS THE FARMERS' GREATEST EARLY MONEY CROP. THERE SHOULD BE A STRAWBERRY FIELD ON EVERY FARM.



One million Bountiful Ridge Grown plants in this field. Living examples of vigor and thriftiness—they will give results wherever planted.

A liberal spreading of barnyard manure is always desirable for a new strawberry bed, being careful not to let any large chunks lay on the beds. If this is not possible, be sure and mulch the beds with some straw or other reasonably coarse litter to protect the plants during severe freezing weather. Remove litter from the beds in spring and rake to the middles of the rows to help control weed growth and keep the berries clean while ripening. We recommend that they be planted in rows $3\frac{1}{2}$ to 4 feet apart, putting the plants from 15 to 24 inches apart in the rows, depending on the variety. Putting the rows $3\frac{1}{2}$ feet apart and plants 18 inches apart in the row requires about 8000 plants to the acre. Putting the rows 4 feet apart and plants 18 inches apart in the row requires about 7250 plants to the acre. It is always desirable to plant on a slightly elevated row and continue to build this up while hoeing and cultivating the plants to insure drainage for the beds during the picking season. Liberal applications of manure, applied after plowing and worked well in the soil, are the best things to build up the land ready for planting.

We have developed our strawberry plant business till we are now shipping plants by the million each season, and our plants are grown on land that will produce clean-rooted stock. Each field is personally examined each year several times for mixtures, and we feel confident that we have as nice plants to offer as can be grown by anyone. We are practicing the same policy of grading and packing our strawberry plants as we are in the balance of our nursery, and you will find our plants and methods of packing superior to many other nurseries. We have tried to make our prices as reasonable as it is possible to make them and still maintain our standard of quality. **IT DOES NOT PAY TO BUY CHEAP STRAWBERRY PLANTS, AND AT THE PRICE THEY ARE NOW SELLING IT DOES NOT PAY YOU TO DIG FROM YOUR OWN BEDS AND LIMIT YOUR YIELD.** Our plants are all grown on sandy loam soils and they can be dug at most any time with their full root system. We have cut our list of varieties till we are only listing what we consider the best, except for a few new varieties which we are listing for trial, and we know they are worthy but we advise they be tried in your section before planting heavy of them. They have proven up well in our test blocks here and we would like for you to try them. Good Plants are not so plentiful this year. We have a supply of several million, but if there is a normal demand there will develop a plant shortage, so do not wait too long in placing your order this spring. **Our shipping season opens October 1st and continues until May 10th each year.** We shall do our best to serve you in a satisfactory way in whatever strawberry plants or other nursery stock you might want to plant this spring, and we shall look forward to serving you. **SPECIAL PRICES WILL BE GIVEN TO CO-OPERATIVE BUYING ORGANIZATIONS AND CLUB ORDERS. WE WANT TO SERVE YOU IN THE WAY THAT IS TO YOUR BEST INTERESTS.**

EARLY VARIETIES

BLAKEMORE A promising New Variety that was released by the U. S. Department of Agriculture in 1930. It is a very free plant maker and responds quickly to good treatment. It is an abundant bearer, the fruit averages large and retains its bright attractive red color even after being picked several days. Quality is superior to Missionary and Klondyke but not equal to Premier. It will ripen a few days earlier than Premier.

PREMIER

An old favorite and possibly the world's greatest strawberry

No strawberry ever introduced has brought the returns to the grower that the Premier has, and it still stands unchallenged as a real money-maker. It has a record very hard to equal as an early market berry, and we cannot say too many good things about it. Consider these important facts about Premier and you can readily understand why we say this about it. Until the introduction of the Blakemore it had no equal as a variety that would adapt itself to most all soil and climatic conditions, whether the soil was sandy, clay loam or rocky; whether it was planted in North Carolina, Mass., or Ill., you always had an abundance of new plants that were thrifty and disease free. The land did not have to be rich. Of course, it will do better on good soils, but even on comparatively poor soil Premier always makes a showing for you. It can be considered almost frost-proof. It has never failed in a crop in this section since it was introduced. The berries average large and hold up well under heavy crops and unfavorable seasonable conditions; it ripens over a comparatively long period, from two to three weeks; the berries have an attractive bright red color and unusual quality that is only surpassed by Chesapeake and possibly Red Gold. It is moderately firm and will carry well to markets up to three hundred miles and further if handled properly. It is the best of the tried and proven early varieties. As an assurance for next year's income, plant an acre or more of Bountiful Ridge grown PREMIER this spring.

HOWARD 17 Conceded by all eminent horticulturists to be the same as Premier.

DORSETT *The Berry Supreme*

THE GREATEST OF ALL RECENTLY INTRODUCED BERRIES, FAIRFAX AND CATSKILL BEING ITS ONLY RIVALS. THE IDEAL COMMERCIAL BERRY COMBINING VIGOROUSNESS, PRODUCTIVENESS AND QUALITY

Released for introduction by the U. S. Department of Agriculture spring 1933. The Dorsett surely makes a worthy companion for the Fairfax as each of them seem to have their advantages. The foliage of Dorsett resembles that of Blakemore to some extent, apparently not being as vigorous as Fairfax but equally as resistant to diseases. The foliage and fruiting stems are more erect than Premier and it is a free plant maker. The fruit is usually conic in shape. The color is bright red similar to Blakemore. The berries will average much larger than Blakemore although not quite so large as Fairfax. The flavor of Dorsett is not equal to Fairfax but superior to other Early berries and can be classed among the best. In production test made season of 1932 it outyielded the Fairfax considerably and naturally had a wide margin on all other varieties. Premier being its nearest rival. The Dorsett is not as firm as the Fairfax but is equal to Blakemore and more firm than Premier so should be a good commercial variety because of its productiveness, attractive color, and excellent quality for an early berry.

FAIRFAX *Aristocratic Rival of the Dorsett*

NO BERRY INTRODUCED IN RECENT YEARS HAS PROVED A GREATER SUCCESS. THEY ARE TRULY MAGNIFICENT IN APPEARANCE, EXAMPLES OF PRODUCTIVENESS AND WONDERFUL QUALITY.

Released for introduction by the U. S. Department of Agriculture spring 1933 we predicted the Fairfax to be a great success and it has fulfilled our prediction. It has proved all that has been claimed for it and no grower of strawberries can afford to be without them. The foliage of the Fairfax seems very vigorous, even more so than the Premier, our old standard of comparison. The foliage and fruit stems extend well above the ground which tends to give clean fruit and make the fruit ripen more uniformly. The Fairfax ripens about the same time as Premier, and its fruiting season extends over a long period. In production tests for season of 1932 the Fairfax did not yield quite as heavy as Dorsett but held a big lead over Premier, its nearest rival, and twice as many as many of our old standard varieties. The quality of the Fairfax is equal to the best of our older varieties. The berries are large to very large, of a bright red color at picking time. Like the Bellmar it turns dark after being picked for several days but retains its flavor and firmness. The Fairfax should be planted for both home and commercial use.

NANCY LEE A seedling of our own with unknown parentage. It has many of the characteristics of the Premier and Aroma. We have tested it thoroughly here in the Nursery and its main points of merit are its unusual thriftiness and resistance to all diseases; its ability to crop under most trying conditions; its resistance to frost injury; its productiveness, and its superior quality to all other Early berries we have tested. Its starts ripening a week before Premier and continues to give an abundance of Berries for nearly a month. The berries average large to very large, most of them having a double cap. It is shaped like the Premier and produces its berries near the ground like Premier.

MISSIONARY The leading berry of the south for several years. Popular because of its ability to make plants on light sandy soil as on loamy soils; its thriftiness and productiveness of medium to large berries, which are dark red and very firm, so as to carry to distant markets and because it is a favorite of the "cold pack" and "juice" men. It will possibly be replaced entirely by the Blakemore in a few years.

SEN. DUNLAP

(Dr. Burrell). An old-time universal favorite of the Warfield type berry. Conceded to be the same as the Dr. Burrell. Makes abundance of thrifty plants even under adverse soil and climatic conditions. Very productive of medium-size berries of average quality.

DR. BURRELL

Same as Senator Dunlap. For description see Senator Dunlap.



PREMIER



MASTODON

Living examples of vigor. Healthy foliage, clean fibrous roots; all fresh dug. They must give you results if properly planted and cared for.

COMPLETE PRICES
FOR STRAWBERRY
PLANTS ON PAGE 28

MID-SEASON VARIETIES

CATSKILL ONE OF THE MOST SUCCESSFUL MID-SEASON BERRIES OF RECENT INTRODUCTION

IT HAS PROVED ITS RIGHT AS A LEADER OF MID-SEASON VARIETIES.

A vigorous grower; somewhat frost resistant; extremely productive, equaling Dorsett and Premier; berries very large, firm and of good quality.

The Catskill is a product of the New York Experiment Station, being a cross between Marshall and Premier. It has proved up under test for the past six years and is now recognized as one of the best mid-season berries in cultivation. The foliage is healthy in this latitude. It is a good plant maker and has proved to be extremely productive. The berries are large as Big Joe and Chesapeake and of good quality although not rated quite up to Premier and Fairfax. We strongly recommend Catskill for this and more Northerly sections. (See Inside back of cover in color)

ABERDEEN A comparatively new variety. The plants show unusual thriftiness, making abundance of new plants. The Aberdeen is unusually productive, equaling or surpassing the Premier. The berries will average larger than Premier, being somewhat pointed in shape, and most every berry is perfect in shape. Its ripening period extends from two to three weeks.

BIG JOE OUR MOST POPULAR MID-SEASON BERRY

A Beautiful Berry - A Money-Maker

No other mid-season berry has stood the test of varied soil and climatic conditions to which the Big Joe has been subjected to for the past twenty years and come through with the fine record it has for general hardiness, productiveness and being a profitable berry to grow. It will withstand as much rough treatment as any variety we know and still come through. It is a very large, attractive, dark bright red berry that will sell on any market. It can always be depended on to make a good set of plants and come through with a crop, a combination which makes it one of the most popular and profitable berries to grow.

AROMA One of the best for its season, following closely on the Big Joe. The plant is very thrifty, and readily adapts itself wherever it is planted. The fruit is medium to late, dark bright red, the color carrying through the berry. It is firm and a good shipper. It is a good plant maker and very productive, the blossoms being very resistant to frost injury.

LATE VARIETIES

CHESAPEAKE QUALITY - BEAUTY - PRODUCTIVE
A THREE POINT WINNER

GIVEN GOOD CARE NO OTHER LATE BERRY WILL EQUAL IT

It will not stand abuse, seeming to do best in dark, loamy soil and heavier soils where there is plenty of moisture. It will thrive on well tilled new land. Like the Premier, it is about frost-proof and bears abundantly, the plants having large, healthy foliage. The berries are large and attractive, being superior in quality. The berry is very firm, so you can ship it to distant markets.

WILLIAM BELT This variety is the standard of excellence for quality. Berries average large in size, being somewhat irregular in shape, having an attractive cap, and the berries themselves are a bright, glossy red, which makes them very handsome. On any market where quality and appearance pre-dominate among the buyers the Wm. Belt will prove a good money-maker for the grower.

CULVER A product of the New York Experiment Station. We consider it the best of the late berries which they have released. It is a good plant maker; not so susceptible of leaf spot. The berries are very large, bright red color and excellent quality, and seemed quite firm here with us in our test block.

GANDY A tried and proven real late berry. A vigorous grower, making plants freely, preferring springy soil to come to its best. Berries are large, very firm and attractive.

LUPTON A WORTHY RIVAL OF CHESAPEAKE

A fancy late shipping berry similar to Chesapeake in size and appearances but does not have the quality the Chesapeake has. We recommend it where you cannot get satisfactory beds of plants of Chesapeake, because the Lupton will do equally as well on most soils, making abundance of plants and being a vigorous grower, and you can always depend on a good crop of Lupton berries.



BIG JOE

1 1/3 ACRES BRINGS GROSS RETURN
OVER \$1300.00—1937

**YORK COUNTY, PA. GROWER BOOSTS
BOUNTIFUL RIDGE GROWN PLANTS.**

York County, Pa.
Oct. 15th. 1937

Gentlemen:

My plants bought April 1936 grew well in spite of unfavorable growing season that summer and I sold more than \$1300.00 in berries from about 1 1/3 acres of Premier and Dorsett varieties this summer. My plants bought April 1937 have made an exceptional growth this summer as well as the older field I am carrying over to another year. I take pleasure in recommending your plants to my friends.

Wm. Fitz, York, Pa.

**PRICES OF STRAWBERRY PLANTS
ON PAGE 28.**

EVERBEARING VARIETIES

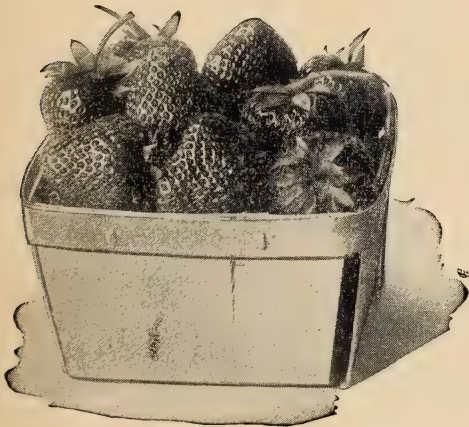
THE
GIANT**MASTODON**THE KING OF ALL
EVERBEARING STRAWBERRIES

Harvest a crop three months after planting the plants and continue to pick the berries 'till frost comes. A few thousand Mastodon plants planted on good soil and cared for means an independent income. They require good, fertile soil, and if given this and good cultivation they will delight you with a fine crop of large, beautiful, luscious berries. Our stock of Mastodon plants are genuine and selected for productiveness.

This variety is supreme among all ever-bearing varieties even as the Premier is supreme among the early spring bearing varieties. It outyields some of our best June bearing sorts during their season and continues to bear throughout summer and fall berries of amazing size and superior quality, being very firm and attractive. For best results newly set plants should be disbudded up to July 1st. They will then bear very successfully by hill culture methods as well as matted bed row system. Where hill culture is practiced, set the plants 15 inches apart in the row and have rows from 2 to 2½ feet apart. This produces strong, robust hills that produce very heavily.



THE MASTODON EVERBEARING



GEM EVERBEARING

LUCKY STRIKE Introduced recently by an Eastern plant grower and is worthy of planting. We do not consider this variety equal to Mastodon, but it is superior to Progressive and Champion ever-bearing sorts. It is a persistent yielder of medium to large berries of very good quality and good appearances. Makes plants quite freely and is a vigorous grower.

GEM A NEW AND
OUTSTANDING EVERBEARER

The most promising of all everbearing varieties recently introduced. Coming from the Middle West, it has adapted itself to our conditions on the Eastern Shore very readily. We find it to be an excellent plant maker, very productive. Berries are large and are real beauties of excellent quality. This is the Mastodon's closest rival. We can recommend it for trial.

Complete prices of strawberry plants on page 28.

"PLANTS ARE COVERED TO PREVENT WINTER INJURY TO CROWNS"

Investigations over a period of years have proven that many strawberry plants are injured in the crown by sudden low temperatures in early winter and by extreme low temperatures during the winter. This injury is not severe enough to kill the plants but reflects directly in the growth and productiveness of the plants the following summer. Plants GROWN IN THIS IMMEDIATE SECTION HAVE SELDOM SHOWN SERIOUS INJURY OF THIS KIND, due to our mild winters and IS AN IMPORTANT REASON WHY YOU CAN SECURE THE BEST PLANTS AVAILABLE HERE AT PRINCESS ANNE. AS AN EXTRA PRECAUTION FOR THE BENEFIT OF OUR CUSTOMERS HOWEVER WE ARE COVERING EACH YEAR SEVERAL HUNDRED THOUSAND PLANTS OF THE LEADING VARIETIES AS AN ADDED GUARANTEE OUR CUSTOMERS WILL GET ABSOLUTELY UNINJURED, THRIFTY PLANTS FOR THEIR PLANTINGS WHEN REQUESTED. PLANTS DUG AND DISTRIBUTED FROM OUR COVERED PLANT FIELDS LAST YEAR HAVE GIVEN UNUSUAL RESULTS DURING THE PAST GROWING SEASON. WE ARE COMPELLED TO CHARGE A LITTLE EXTRA FOR THESE PLANTS, THIS ADDED COST HOWEVER IS VERY SMALL AND WE ASK THAT YOU SUBMIT YOUR LIST OF VARIETIES AND QUANTITIES FOR SPECIAL QUOTATIONS ON THIS TYPE STOCK. THE BOUNTIFUL RIDGE NURSERIES WILL ALWAYS LEAD IN PRODUCTION METHODS THAT WILL INSURE GREATER SUCCESS TO THOSE WHO PLANT THEIR STOCK.



"THE STAMP OF QUALITY"



This seal on the label of your Strawberry plants indicates they are Bountiful Ridge Grown and is your guarantee of True-To-Name, Thrifty, Productive, Dependable plants. Bountiful Ridge Plants are grown with extreme care, dug carefully without exposure, properly cleaned and packed in fresh clean moss so as to carry to all planting sections in the best of condition and are becoming FAMOUS FOR GROWTH AND PRODUCTIVENESS.

PRICES FOR ALL VARIETIES OF STRAWBERRY PLANTS

ALL PLANTS GUARANTEED TO BE OF FIRST QUALITY, TRUE-TO-NAME AND FREE FROM ALL INJURIOUS DISEASES

Plant a field of Strawberries this Spring for a guaranteed income next Spring. Write to us if you are interested in making a large planting for special quotations. Prepaid rates quoted to any place on request. Submit quantity and variety, and we will give delivered price on your planting needs so that you may know the exact cost. Samples gladly submitted if interested in large quantities. All plants are field grown, all prices net, no discount for cash with order. Prices are f.o.b. Princess Anne, Maryland.

Prices given in 1000 to 5000 lots are per 1000 plants.

Early Varieties	25	50	100	300	500	1000	2000	3000	4000	5000
BLAKEMORE	\$.25	\$.40	\$.60	\$1.35	\$2.00	\$3.75	\$3.65	\$3.55	\$3.40	\$3.25
NANCY LEE30	.45	.75	1.80	2.50	4.50	4.40	4.30	4.15	4.00
DORSETT30	.45	.75	1.80	2.50	4.50	4.40	4.30	4.15	4.00
PREMIER30	.45	.75	1.80	2.50	4.50	4.40	4.30	4.15	4.00
HOWARD 1730	.45	.75	1.80	2.50	4.50	4.40	4.30	4.15	4.00
FAIRFAX35	.50	.80	1.95	2.75	5.00	4.90	4.80	4.65	4.50
MISSIONARY25	.40	.60	1.35	2.00	3.50	3.40	3.30	3.15	3.00
DR. BURRELL30	.40	.70	1.65	2.25	4.00	3.90	3.80	3.65	3.50
SENATOR DUNLAP30	.40	.70	1.65	2.25	4.00	3.90	3.80	3.65	3.50

Mid-Season Varieties

CATSKILL35	.50	.80	1.95	2.75	4.75	4.65	4.55	4.40	4.25
ABERDEEN30	.40	.70	1.65	2.25	4.00	3.90	3.80	3.65	3.50
BIG JOE30	.45	.75	1.80	2.50	4.50	4.40	4.30	4.15	4.00
AROMA30	.40	.70	1.65	2.25	4.25	4.15	4.00	3.90	3.75

Late Varieties

CHESAPEAKE35	.50	.80	1.95	2.75	5.00	4.90	4.80	4.65	4.50
WM. BELT30	.45	.75	1.80	2.50	4.50	4.40	4.30	4.15	4.00
LUPTON30	.45	.75	1.80	2.50	4.50	4.40	4.30	4.15	4.00
CULVER30	.45	.75	1.80	2.50	4.50	4.40	4.30	4.15	4.00
GANDY30	.40	.70	1.65	2.25	4.25	4.15	4.00	3.90	3.75

Everbearing Varieties

MASTODON40	.60	1.00	2.40	3.50	7.00	6.90	6.80	6.65	6.50
GEM40	.60	1.00	2.40	3.50	7.00	6.90	6.80	6.65	6.50
LUCKY STRIKE40	.60	1.00	2.40	3.50	7.00	6.90	6.80	6.65	6.50

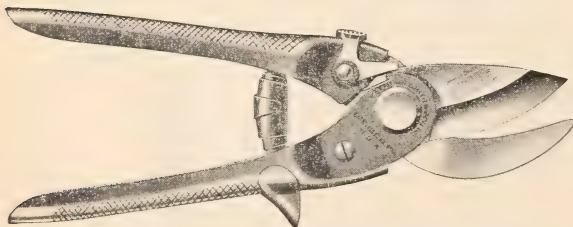
Parcel Post Rates

	25 Plants	50 Plants	100 Plants	500 Plants	300 Plants	1000 Plants	More than 1000
1st and 2nd zones, up to 150 miles.....	8c	9c	12c	\$.20	\$.26	\$.46	1.00
3rd zone, 150 to 300 miles.....	10c	12c	18c	.34	.46	.86	Ship
4th zone, 300 to 600 miles.....	12c	16c	28c	.60	.84	1.48	By
5th zone, 600 to 1,000 miles.....	15c	21c	39c	.87	1.23	2.19	Express
6th zone, 1,000 to 1,400 miles.....	18c	26c	50c	1.14	1.62	2.90	
7th zone, 1,400 to 1,800 miles.....	22c	32c	62c	1.42	2.02	3.52	

If you wish your plants shipped by Parcel Post, please add enough for postage according to the above rates, otherwise they will be shipped by express or C.O.D. for the amount of postage.

SEYMOUR SMITH DE-LUX MODEL

"CLIPPER" HAND PRUNER



Without question the most efficient hand clipper with two way cutting blades we know of today. It is moderately priced, strongly built, easy cutting and just what every orchardist should use for thinning out those small branches and succors.

8 inch size Chrome finish.....\$1.50 each
10c extra for postage

SEYMOUR SMITH

ORCHARD PRUNER



A moderate priced, double cutting, strongly constructed pruning shear that we have found to be very efficient. A practical easy cutting and durable pruner for average work. Will make cuts up to 1 1/4 in.

24 Inch size.....\$2.00 each

12c extra for postage

Garden Seed Department

Vegetable and Flower Seed - Season 1938

In response to many hundreds of inquiries received during the past several years we are including a seed department in our 1938 catalog. We have given much time and consideration in the selection of listed varieties to give you absolutely the best strains obtainable.

They are germ-tested and inoculated to insure success for you no matter where planted. They have proven their superiority in every part of the country and can be depended upon to produce full crops in the least number of days from planting.

The Bountiful Ridge Seeds listed in this catalog guarantee your garden the most accurately described, surest-to-mature vegetable and flower seeds which are obtainable in seed form.

Our prices are low for these quality seeds. They are sent POSTPAID to any part of the United States unless otherwise stated. Give Bountiful Ridge Seeds a trial when you plant this year; they are Best by Test.

Note: For prices on larger quantities than quoted, write us your needs. Quantity prices gladly quoted.

All prices are postpaid up to 10 pounds on vegetable seeds.

SPECIAL GET ACQUAINTED OFFER

To acquaint you with the quality of our garden seeds we make this FREE offer. Send your order to us for one dollar (\$1.00) in vegetable seeds (your choice) and we will send you FREE 50¢ worth of choice selected flower seeds from all over the world. They will bloom many beautiful color combinations from early to late. Don't wait! Send your order today as this offer is for a limited time only.

You may add an extra package of any 10¢ seeds when you order five packets of assorted items, at no charge.



BUSH LIMA BEANS

Seventy to eighty days. Two lbs. plant 100-yard row.

Henderson's Bush Lima. Sometimes called Dwarf Carolina. Very early bush variety, of splendid quality and rich flavor. Very popular for pkt. 7c; ¼ lb. 15c; 1 lb. 35c. 1 lb. 30c.

Burpee's Bush Lima. (Improved). Larger and heavier than the original. Highly productive and mature a week earlier than the original. 2 oz. pkt. 8c; ¼ lb. 15c; 1 lb. 39c.

WAX OR YELLOW POD BUSH BEANS

Mature 50-70 days. Two lbs. plant 100-yard row.

Improved Golden Wax. Small erect plant, rust proof, yellow, fine home garden variety. Productive. 2 oz. pkt. 10c; ¼ lb. 15c; 1 lb. 40c.

Pencil Pod Black Wax. Absolutely stringless and very meaty. Best round podded wax bean. 2 oz. pkt. 10c; ¼ lb. 15c; 1 lb. 35c.

Sure Crop Wax Beans. Known as Bountiful Wax. Desirable for shippers. Flat Golden Yellow pods. Very early, stringless. 2 oz. pkt. 8c; ¼ lb. 15c; 1 lb. 30c.

GREEN POD BUSH BEANS

Mature 50-70 days. Two lbs. plant 100-yard row.

Giant Stringless Greenpod. Fine for canning. Wonderful quality, very early. For home or market. 2 oz. pkt. 7c; ¼ lb. 15c; 1 lb. 35c.

Bountiful. Important early variety. Long flat pod. Wonderful quality, prolific and absolutely stringless. 2 oz. pkt. 8c; ¼ lb. 12; 1 lb. 35c.

Burpee's Stringless Greenpod. Plant large, matures early, fine quality, very productive, stringless. 2 oz. pkt. 10c; ¼ lb. 15c; 1 lb. 40c.

Tender Green. Dependable bearer, pods straight and meaty. Fine for market gardeners and canners. 2 oz. pkt. 8c; ¼ lb. 15c; 1 lb. 35c.

POLE or RUNNING BEANS

Mature 65-75 days. Three lbs. to 100 poles.

King of the Garden. White lima. One of the best and most productive pole lima beans. Heavy producer, stands drought well. 2 oz. pkt. 8c; ¼ lb. 15c; 1 lb. 35c.

Carolina or Sewee. Small early variety of lima similar to Henderson only more prolific and of longer bearing. Very fine. 2 oz. pkt. 8c; ¼ lb. 15c; 1 lb. 30c.

Kentucky Wonder. Most prolific of all pole beans. Good for home markets or canning. Stringless and tender. 2 oz. pkt. 5c; ¼ lb. 10c; 1 lb. 30c.



BEETS

Matures 45-60 days. Three ozs. plants 100-yard row.

Early Blood Turnip. Very hard to equal. Top shaped, early in maturity, deep blood red in color, very tender. ½ oz. pkt. 10c; ¼ lb. 30c; 1 lb. 90c.

Crosby's Early Egyptian. Extra early, flat in shape, mottled, bright red color. One of the best and latest strains. ½ oz. pkt. 10c; ¼ lb. 30c; 1 lb. 90c.

Detroit Dark Red. Best for truckers, shippers, or canning. Dark red color, free from strings, matures early. ½ oz. pkt. 10c; ¼ lb. 30c; 1 lb. 90c.

Mangel or Stock Beet. Matures 95-110 days. Three ozs. plant 100-yard row.

Mammoth Long Red. Very productive. Yields from 30 to 50 tons per acre. Fine food for cows. ½ oz. pkt. 10c; ¼ lb. 29c; 1 lb. 50c.

CABBAGE SEED

Matures in 65-125 days. One oz. makes about 1000 plants.

Copenhagen Market. Early round head cabbage, excellent quality, very early shipper, fine grained and tender. Pkt. 10c; 1 oz. 25c.

Early Jersey Wakefield. The most popular of all early cone shaped head varieties. Standard everywhere. Valuable for home gardens. Pkt. 10c; 1 oz. 20c.

Early Flat Dutch. Successful everywhere, fine for Southern states for its ability to resist heat. Pkt. 10; 1 oz. 20c.

Late Flat Dutch. Produces large solid heavy uniform heads. Best cropper obtainable. Pkt. 10c; 1 oz. 20c.

Danish Baldhead. Produces very solid good quality, round head. Popular with market gardeners. Best for Northern latitudes. Fine for South. Pkt. 10c; 1 oz. 20c.

Marion Market. Yellows resistant strain, of Copenhagen Market. Earlier by ten days. Round head. Produces crop when others fail. Pkt. 10c; 1 oz. 40c.

"BOUNTIFUL" LEADER COLLECTION VEGETABLE GARDEN

1 Pkt. Each of our 15 most popular varieties

Detroit Dark Red Beet
Early Jersey Wakefield Cabbage
Chantenay Carrots
Arlington White Spine Cucumber
Iceberg Head Lettuce
Golden Bantam Sugar Corn
Hales Best Cantaloupe

Yellow Globe Danver Onion
Guernsey Hollow Crown Parsnip
Bonny Best Tomato
Kleckley Sweet Watermelon
Early Sralet Globe Radish
Blight-resistant Savoy Spinach
Patty Pan Squash
Amber Globe Turnips

Total Value \$1.50

Postpaid for 75c.

**CARROT SEED**

Matures 60-80 days. Three ozs. plants 100-yard row.

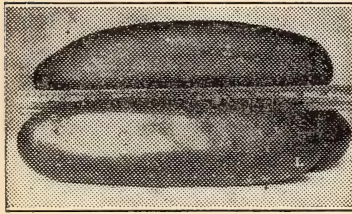
Danvers Half Long. Extra fine strain, for home gardeners and shipping. Flesh orange-red, crisp and tender. Pkt. 10c; 1 oz. 15c.

Chantenay. Medium early, half long, red-orange color. Best for canning and table use. Pkt. 10c; 1 oz. 15c.

COLLARDS

Matures 80-90 days. One oz. plants 100-yard row.

Georgia or Creole. Plant and cultivate same as cabbage. Often used as greens. Pkt. 10c; ¼ lb. 25c.

**CUCUMBERS**

Matures 55-75 days. Four oz. plants 100-yard row.

Long Green Improved. Black Spine variety, deep green color, when ripe clear yellow. Pkt. 10c; 1 oz. 13c; ¼ lb. 45c.

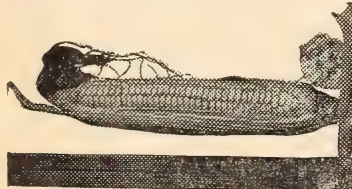
Davis Perfect. Flesh very white. Most desirable variety for home and market. Pkt. 10c; 1 oz. 15c; ¼ lb. 45c.

Arlington White Spine. Standard White Spine type for years. Best in this type. Pkt. 10c; 1 oz. 15c.

Snow's Prolific Pickle. High quality, widely used, pickling variety. Pkt. 10c; 1 oz. 15c; ¼ lb. 45c.

SWEET or SUGAR CORN

Ripens 72-90 days. One lb. of seed plants 100-yard row.



Howling Mob. Very early and of fine flavor. Good bearer. 2 oz. pkt. 10c; ¼ lb. 15c; 1 lb. 35c.

Golden Bantam. Sweetest of all sweet corn. Hardy, productive. 2 oz. 10c; ¼ lb. 15c; 1 lb. 35c.

Country Gentleman. Prolific variety, especially good for canning, sweet and tender. 2 oz. pkt. 10c; ¼ lb. 15c; 1 lb. 35c.

Stowells Evergreen. Best known late variety. Popular with market gardeners and canners. Large tender sweet ears. 2 oz. pkt. 10c; ¼ lb. 15c; 1 lb. 35c.

CAULIFLOWER

Matures 90-130 days. ½ oz. plants 100-yard row.

Extra Early Dwarf Erfut. Fine earliest maturing known. Pkt. 10c; 1 oz. 65c.

Autumn Goliath. Finest of all. Dense foliage, stiff heads, sow early. Pkt. 10c; 1 oz. 45c.

CELERY

Matures 130-150 days. 2 oz. seed plants 100-yard row.

Giant Pascal. Best large green celery. Very productive and profitable, best for Winter use. Pkt. 10c; 1 oz. 25c.

Golden Self Blanching. Best of this type, big hearted type, crisp tender. Pkt. 10c; 1 oz. 40c.

White Plume. Finest variety today for private garden. Blanching easily, soon ready for use. Pkt. 10c; 1 oz. 25c.

**LETTUCE**

Matures 50-70 days. (Header) 2 oz. plants 100-yard row.

Black Seeded Simpson. Standard leaf American variety. Large crisp leaves, grows quickly. Pkt. 10c; 1 oz. 15c.

Early Silesian. Most popular of curled varieties. Fast growing. Pkt. 10c; 1 oz. 15c.

Big Boston. Fine header, high reputation with all truckers. Pkt. 10c; 1 oz. 20c.

Iceberg. Early maturing green variety. Very solid. Pkt. 10c; 1 oz. 15c.

MUSTARD

Matures 28-45 days. 4 oz. plants 100-yard row.

Giant Southern Curled. Most popular Mustard on the market today. Leaves large, yellowish green. 1 oz. pkt. 10c; ¼ lb. 25c.

Mustard Spinach. Mild mustard with a distinct Spinach flavor. Rapid grower, first cutting 3-4 weeks. Pkt. 10c; 1 oz. 15c.

ONIONS

Matures 88-130 days. 4 oz. plants 100-yard row.

Yellow Globe Danvers. Best early yellow, crisp and mild. Pkt. 10c; 1 oz. 25c.

Yellow Prize Taker. Large producer, 15 days earlier than Southport. Good keeper. Pkt. 10c; 1 oz. 25c.

Southport Red Globe. Very desirable main crop. Globe shaped, smooth glossy. Heavy producer, fine shipper and keeper. Pkt. 10c; 1 oz. 30c.

Silverskin. Best of all white Onions. Matures well, a good keeper and an all-round favorite. Pkt. 10c; 1 oz. 30c.

OKRA or GUMBO

Matures 50-60 days. 6 oz. plants 100-ard row.

Long White Velvet Pod. Exceedingly productive, unusually long, smooth, green-white, pods. Pkt. 10c.

PARSLEY

Matures 60-90 days. 2 oz. plants 100-yard row.

Fine Double Curled. Leaves finely cut and curled. Desirable for garnishing and drying. Pkt. 10c. pods. Pkt. 10c; 1 oz. 30c.

**MUSKMELON or CANTALOUPE**

Matures 85-110 days. 3 oz. sow 100-yard row.

Rocky Ford. Famous wherever raised. Heavily netted, thick green sweet flesh, even size, good shipper. Pkt. 5c; 1 oz. 15c; ¼ lb. 35c.

Fordhook. Thick orange flesh, small cavity, well ribbed, very appetizing flavor. Pkt. 5c; 1 oz. 15c; ¼ lb. 35c.

Hales Best. Very early, thick salmon flesh, oval shaped, remarkable flavor. Pkt. 5c; 1 oz. 15c; ¼ lb. 35c.

Hearts of Gold. Very fine variety, cavity small, deep salmon flesh, well netted. Pkt. 5c; 1 oz. 15c; ¼ lb. 35c.

PARSNIPS

Matures 90 days. 3 oz. plants 100-yard row.

Hollow-Crowned Guernsey. Most popular and generally planted type. Pkt. 10c; 1 oz. 15c.

GARDEN PEAS

Mature 54-65 days. 4 lbs. sows 100-yard row.

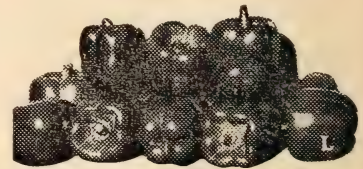
Early Alaskan. Earliest pea grown, hardy and prolific. Peas small, round and tender. ¼ lb. 10c; 1 lb. 30c; 5 lbs. \$1.25.

Early Morning Star or First and Best. Very fine flavor, creamy, white seeded, extra early, highly recommended. ¼ lb. 10c; 1 lb. 30c; 5 lbs. \$1.25.

Early Bird. Very popular wherever grown. Pods large and well filled. ¼ lb. 10c; 1 lb. 30c; 5 lbs. \$1.25.

Gradus or Prosperity. Very large, tender quality, and prolific bearer. ½ lb. 18c; 1 lb. 30c; 5 lbs. \$1.25.

Telephone. Large, wrinkled, and creamy green color. Very popular as late variety. ½ lb. 18c; 1 lb. 30c; 5 lbs. \$1.25.

**PEPPERS**

Mature 100-130 days. 1 oz. plants 100-yard row.

Wonder Pepper. One of the largest red peppers. Flesh thick, mild, tender and sweet. Pkt. 10c; 1 oz. 40c.

Large Bell or Bull Nose. Deep green color when young, bright crimson when ripe. Pkt. 10c; 1 oz. 30c.

Long Red Cayenne. Colors bright crimson, very hot, long slender

PUMPKINS

Matures 108-120 days. 3 oz. plants 100-yard row.
Big Tom. Large rich orange-yellow, tender and tasty. 1 oz. 10c; ¼ lb. 25c.
Large Cheese. Excellent kitchen variety, high in favor for cooking. Pkt. 10c; 1 oz. 15c.



Brown Special. A new late variety of great merit for canning especially suited to the South. Fruit resembles Stone and Greater Baltimore but larger. Color dark red, heavy structure, very solid. Best of recent introductions. Pkt. 10c; 1 oz. 75c.

Marglobe. Resistant to wilt. A superior red variety suitable for shipping and home gardens. Fine general purpose tomato. Pkt. 10c; 1 oz. 55c.

Market Champion. Ripens early, heavy yielder, good market and canning variety. Pkt. 10c; 1 oz. 55c.

Write us for quotations if interested in larger quantity for field planting.

TURNIPS

Mature 40-80 days. 4 oz. sows 100-yard row.

Early Flat Red or Purple Top. Very early, white flesh, tender and mild in flavor. 1 oz. 10c; ¼ lb. 20c.

Early Flat White Dutch. Top small and strap leaf. Roots or bulbs are all white, flesh tender and tasty. 1 oz. 10c; ¼ lb. 20c.

Large Red or Purple Top White Globe. Large size, attractive in appearance. Most popular and largely used of all white varieties. 1 oz. 10c; ¼ lb. 20c.

Amber Globe. Finest of all yellow Turnips. Flesh is light yellow, fine texture. 1 oz. 10c; ¼ lb. 20c.

Rutabaga. Improved purple top strain, heavy cropper, flesh yellow with purple crown. Grown by market gardeners. 1 oz. 10c; ¼ lb. 20c.

Seven Top (For Greens). Used entirely for greens of salad, may be left to stand in the ground all Winter. Much in demand in Spring. 1 oz. 10c; ¼ lb. 20c.



WATERMELONS

Ripens in 85-100 days. 3 oz. to 100 hills.

Florida Favorite. Vigorous productive vines, producing long fruit. Flesh sweet, deep red in color and of excellent quality. 1 oz. 10c; ¼ lb. 25c; 1 lb. 75c.

Georgia Rattlesnake. An old Southern Standby. Excellent shipper, ready seller, long bright yellowish-green melon good size, with bright

scarlet flesh. 1 oz. 10c; ¼ lb. 25c; 1 lb. 75c.

Kleckley Sweets. Most popular of all melons. Fruit oblong. Rind thin very dark green. Ripens early. Flesh scarlet, sugary and crisp. 1 oz. 10c; ¼ lb. 25c; 1 lb. 75c.

Stone Mountain. Largest melon in cultivation, early for its large size, almost round, with dark green rind. Solid scarlet flesh, few seed. Sweet, tender and juicy. Most popular melon on the market today. 1 oz. 15c; ¼ lb. 35c; 1 lb. \$1.00.

Tom Watson. Oblong dark green melon, finely marked, flesh deep red, fine flavor no core. Most popular shipping variety on the market today. 1 oz. 10c; ¼ lb. 25c; 1 lb. 80c.

Write us for quotations if interested in larger quantity for field planting.

EGG PLANT

Matures 120-130 days. 1 oz. of seed will provide enough plants for 1/8 acre.

Black Beauty. Earliest maturing variety. Size large, color black, and does not change. Popular variety for market gardening. Pkt. 10c; 1 oz. 40c.

Large Round Purple. Productive and vigorous, fruit often reaching weight of 10-12 lbs. Color deep purple, almost black. Very popular. Pkt. 10c; 1 oz. 40c.

POPCORN

Matures 95-115 days.

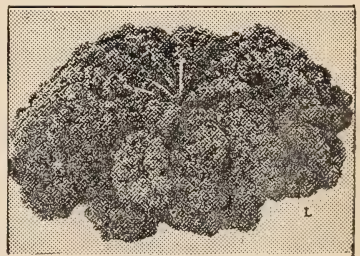
Golden Queen. Golden grained, creamy white when popped. ¼ lb. 15c; 1 lb. 35c.

White Rice. Very prolific bearer. Considered one of the best varieties for popping. ¼ lb. 15c; 1 lb. 35c.

BROCCOLI

Matures in about 65 days. 1 oz. sows 100-yard row.

Early Italian. Plant much resembling Cauliflower. Very popular wherever known. Should be sown early in the Spring for July markets. A money-maker. Pkt. 10c; 1 oz. 40c; ¼ lb. \$1.35.



KALE

Matures 30-50 days. 1 oz. of seed will sow 100-yard row.

Spring or Smooth Leaf Kale. Much planted for table greens, also feeding crop for hogs and cattle. 1 oz. 10c; ½ lb. 25c; 1 lb. 45c.

Dwarf Curled Scotch or Norfolk. Great favorite for garnishing. Foliage dark green, very finely curled and excellent variety. 1 oz. 10c; ¼ lb. 30c; 1 lb. 60c.

RAPE

Matures 6-9 weeks, 5 lbs. to acre broadcast.

One of the best plants for pasturing cattle, sheep and swine. Thrives best in cool weather. Plant in early Spring or late Fall.

1 lb. 20c; 10 lbs. \$1.75.

RADISHES

Mature 23-30 days. 4 oz. plants 100-yard row.

French Breakfast. Olive shaped half long radish, deep red shading to white at tip. Pkt. 10c; ¼ lb. 30c.

Early Scarlet Globe. Adapted for field or greenhouse. Very early, mild and tender. Pkt. 10c; ¼ lb. 30c.

Long Scarlet. Standard variety for home garden, roots long, crisp, and tender. Pkt. 10c; ¼ lb. 30c.

White Icicle. An early maturing long white radish of fine quality. Pkt. 10c; ¼ lb. 30c.

SPINACH

Matures 45-75 days. 4 oz. sows 100-yard row.

Blight resistant Savoy. Very resistant to mosaic disease, yellows, or blight. Fall planting only. Pkt. 10c; ¼ lb. 20c.



SQUASH

Matures 48-70 days. 3 oz. plants 100-yard row.

White Bush or Patty Pan. Color creamy white, most popular of early Squash. Pkt. 10c; 1 oz. 15c.

Golden Summer Crook Neck. Most used of all Summer squashes. Meat fine in texture and very tasty. Pkt. 10c; 1 oz. 15c.

Hubbard Improved. Main crop or winter squash. Excellent keeper lasting all Winter. Pkt. 10c; 1 oz. 15c.

TOMATOES

Mature 90-115 days. 1 oz. produces 1500 plants.

(Certified seed only)

Improved Stone. Medium late, good main crop variety, fine for canning and shipping. Pkt. 10c; 1 oz. 50c.

Greater Baltimore. Main crop or mid-season variety in the South. Earlier than the Stone, very firm and of good color. Vigorous and healthy. Pkt. 10c; 1 oz. 55c.

Flower Seed Department

In offering our patrons the following flower seeds we were guided in our selections by memories of the beautiful flowers we have known for years. They are found in all the old gardens and flower yards wherever flowers are grown.

Our listings include the finest selected strains of all varieties which have been developed in recent years for flower lovers and in order to acquaint you with these new strains, we have listed "Special Offers" of the best known varieties. For lack of space we only list the most popular varieties and ask you to write us about any special flowers which you may wish to plant.

Your flower garden will be a success and a thing of beauty when planted with "Bountiful Ridge Seeds", Best by Test.

The following list of seeds are sent **POSTPAID** to any part of the United States or Canada.

Use order blank in back of catalog to list varieties or collections when ordering.

- *Annual
- **Perennial
- ***Biennial

■ 10c Packets ■

- *Argeratum, Mixed.
- *ASTER, Crego Giant, Mixed.
- *ASTER, Crego Branching, Mixed.
- *Aster, Single Chinensis, Mixed.
- *Aster, Needle, Mixed.
- *Aster, Giant Calif. Sunshine, New.
- *BABY'S BREATH, White.
- **Baby's Breath, White.
- *BALSAM, Rose Flowered.
- *Balsam, Corenella Flowd.
- *BACHELOR'S BUTTON, Double.
- *Bachelors Button, Imp. Mixed.
- *Bachelors Button, Candissamum.
- *BLACK EYED SUSAN, Mixed.
- *BLUE LACE FLOWER, Bedding
- ***CANTERBURY BELLS, Single Mixed.

NON-WARRANTY

We give no warranty express or implied as to description, purity, productiveness or any other matter of seeds we sell and will not be responsible in any way for the crop.

- *Canterbury Bells, Pyramidal.
- *CANDYTUFT, Fine Mixed.
- *Candytuft, Hyacinth Flowd.
- *CARDINAL CLIMBER.
- *CASTOR BEANS.
- *COXCOMB, Dwarf Mixed.
- *Coxcomb, Tall Giant.
- ***CHRYSANTHEMUM, Single Mixed.
- *Chrysanthemum, Double Mixed.
- *CATHEDRAL BELLS.
- *COSMOS, Extra Early Double.
- *Cosmos, Extra Early Mammoth.
- **COLUMBINE, Single Mixed.
- *CYPRUS VINE.
- *CALLIOPSIS, Golden Dwarf.
- *Calliopsis, Mixed Tall.
- *CALIFORNIA POPPIES, Sunst. Mixed.
- *DELPHINIUM, Hybrid Mixed.
- *Delphinium, Chinensis Mixed.
- **ENGLISH DAISY, Giant Double.

Special Collection Offer

Six Queen of the Market Asters
Dark blue, light blue, crimson, shell-pink, deep rose, and white. One pkt. each of the six colors (value 60c) for 45c.

- ***FOXGLOVE, Giant Hybrids.
- **EVENING PRIMROSE, Yellow.
- *FORGET-ME-NOT, Chinese Mixed.
- *GODETIA, Dwarf Azalea Flowd.
- *GILLARDIA, Single Mixed.
- *Gaillardia, Double Mixed.
- *Gaillardia, Bronze Red.
- *HELIOTROPE, Choice Mixed.
- **HIBISCUS, Giant Mixed.

- ***HOLLYHOCKS, Single Mixed.
- *Hollyhocks, Double Mixed.

Special Collection Offer

(Six Giant Crego Asters)

Each collection contains Azure-blue, crimson, shell-pink, deep rose, violet, and white.

One pkt. each of the six separate colors (value 60c) for 50cs. Two pkts. each of the six separate colors (value \$1.20) for 85c.

- *KOCHIA, (FIRE BUSH).
- *LARKSPUR, Imp. Finest Mixed.
- *Larkspur, Dwarf Dble. Mixed.
- *LOBELIA, Crystal Palace Compacta.
- *LOVE-IN-MIST.
- *MARIGOLDS, Tall Double.
- *Marigold, Mixed Double.
- *Marigold, Pastel Mixture.

Special Collection Offer

Five Very Showy Giant Ruffled Petunias

Copper Red, Evening Star (white, yellow throat), Mauve Queen, Robin Hood, (red, black center), and Ruffled Pink. One pkt. each (Value \$1.75) for \$1.00.

Special Collection Offer

Six stately Double Flowering Hollyhocks.

Crimson, Salmon-pink, Rose, Scarlet, White, and Yellow. One pkt. each (value 60c) for 40c.

- *Marigold, French Mixed.
- *MIGNONETTE, Giant Flowered.
- *MORNING GLORY, Jap Mixed.
- *MOONFLOWER, Fragrant.
- *MOURNING BRIDE, Mixed.
- *MIXED ANNUAL FLOWERS, BEDDING.
- *MIXED ANNUAL FLOWERS, Cutting.
- *NASTURTIUMS, Golden Gleam.
- *Nasturtium, Tall Single Mixed.
- *Nasturtium, Dwarf Single Mixed.
- *Nasturtium, Genl. Mixture.

Special Collection Offer

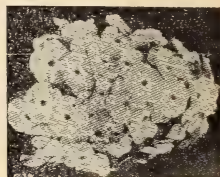
Six Magnificent Tall Double Larkspurs.

A wonderful collection containing Dark Blue Spire, Sky-Blue, Carmine, Orchid, Exquisite Pink and White Spire. One pkt. each (value 75c) for 50c.

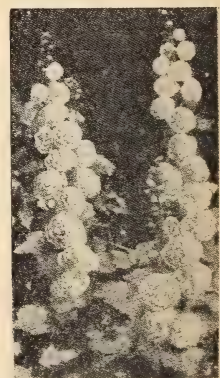
- *POPPY, Oriental.
- *Poppy, Iceland, New.
- *Poppy, California.
- ***POPPY, Shirley Mixed.
- *PANSY, Trimardeau Mixed.
- *Pansy, Fine Bedding Mixed.
- *PERENNIAL SWEET PEAS, Mixed.



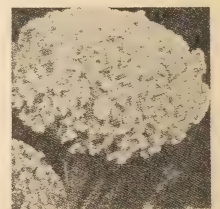
Giant Asters



Gleam Nasturtiums



Double Hollyhocks



Afri Marigold

■ 10c Packets ■

- *PETUNIAS, Mixed.
- *PHLOX, Giant Mixed.
- *Phlox, Dwarf Mixed.
- *PORTULACCA, Single Mixed.
- *Portulacca, Double Mixed.
- *PAINTED TONGUE, Mixed.
- *PERIWINKLE, Mixed.
- *SCARLET SAGE.
- *STOCKS, Large Mixed.
- *Stocks, Beauty Nice.

Special Collection Offer

Six Double Large-Flowering Dwarf Ten Weeks Stocks

Every gardener should include this colorful collection in his garden this year. It contains the six fine colors. Light Blue, Bright Pink, Purple, Blood-Red, Pure White, and Canary-Yellow. One pkt. each (value 60c) for 45c.

- *SUNFLOWER, Field Culture.
- *Sunflower, Double Flowering.
- *SNAPDRAGON, Magus Mixed.
- *Snapdragon, Semi-dwarf Mixed.
- *Snapdragon, Rust Proof.
- *Snapdragon, Tall Mixed.
- *STRAW FLOWER, Mixed.
- *SNOW-ON-THE-MOUNTAIN, MIXED.
- *SWEET ALYSSUM, White.

Special Collection Offer

Six Popular Large-Flowered Half-Dwarf Snapdragons.

Climax, Empress, Golden Monarch, Laura, Mauve Beauty, and Purity. One pkt. each (value \$1.00) for 65c.

- *Sweet Alyssum, Creamy Yellow.
- *Sweet Alyssum, Lavender.
- *SWEET SULTAN, Mixed.
- *SWEET WILLIAM, Single Mixed.
- *SWEET WILLIAM, Double Mixed.
- *TUFTED PANSY, MIXED.
- *VERBENA, Choice Mixed.
- *Verbena, Hybrids, rose to red.
- **WALLFLOWER, Single Mixed.

Special Collection Offer

SIX COLORFUL DWARF ANNUAL PHLOX

Cinnabar (red), Fireball, Isabellina (primrose), Pink, Sky-Blue with White Eye, and Snowball. One Pkt. each (value 90c) for 60c.

- *SWEET PEAS, Early Spencer Mixed.
- *Sweet Peas, Late Spencer Mixed.
- *ZINNIAS, Hybrid Double Mixed.
- *Zinnia, Giant Dahlia Mixed.
- *Zinnia, Giant Mam Mixed.
- *Zinnia, Dwarf Finest Mixed.
- *Zinnia, Imp Pom pom Mixed.

Special Collection Offer

Six Superb Giant Mammoth Zinnias One Pkt. each (value 60c) for 35c.

Special Collection Offer

Four Gorgeous Annual Poppies

American Legion, Fordhook Fairy, Fordhook Hybrids and Wild Rose. One Pkt. each (value 40c) for 25c.

■ 15c Packets ■

- *ASTERS, Sunshine Mixture.
- *COREOPSIS, Double Mixed.
- *COSMOS, New Orange Color.
- *DELPHINIUM, Choice Mixed.
- *HELIOTROPE, Giant Hybrids, Mixed.
- *MARIGOLD, Harmony Mixed.
- *Marigold, Yellow Supreme.
- *MOON FLOWER, Heavenly Blue.
- *NASTURTIUM, Double Sun Gleam.
- *Nasturtium, Double Supreme.
- *VERBENA, Giant Mixed.
- *SWEET PEAS, Choice Mixed.

Special Collection Offer

BURPEE'S EIGHT GIANT RUFFLED SWEET PEAS

These collections contain all the named Ruffled Sweet Peas introduced to date. One Pkt. each (enough seed for 25 ft. of row) (value \$1.45) for \$1.00.

Special Collection Offer

Four Large Tall African Double Marigolds

Guinea Gold (Orange-gold), Lemon Ball, Orange Ball, Yellow Supreme. One pkt. each (value 55c) for 35c.

■ 25c Packets ■

- *PETUNIAS, Fringed Double Mixed.
- *Petunias, Yellow Dainty Lary.
- **Petunias, Nana Comp Mixture.
- *Petunias, Balcony Mixture.
- *PANSIES, Giant Trimardeau.
- *SWEET PEAS, Giant Ruffled.

Special Collection Offer

EIGHT MAGNIFICENT GIANTS OF CALIFORNIA ZINNIAS

This collection will be found ideal for a colorful garden. One Pkt. each (value \$1.20) for 95c.

■ 50c Packets ■

- *PANSIES, Triumph Giant Mixed.
- *Pansies, Engels Giant Mixed.

Special Collection Offer

SIX GIANT PANSIES

Golden Queen (golden yellow), Hortense Rose, Imperial Blue, Lord Baltimore, (yellow, blotched black), President Carnot (purple, edged white) and Victoria (vine-red). One Pkt. each (value 75c) for 50c.

Old-Fashioned Flower Garden Collection

One packet each of the following:

- Snap Dragon (Giant Flowered Mixture).
- Lady Slipper (Balsam)
- Double, mixed colors
- Cosmos (Early Mixed).
- Dianthus (Carnation Flw. Mixed).
- Hollyhocks (Double Mixed).
- Marigold (Sweet Scented).

- Mignonette (Giant Flowered).
- Phlox--Double and Single.
- Poppy--Double and Single.
- Portulacca--Single.
- Dwarf 10-week Stocks.
- Zinnia (Giant Crego Mixed).
- Asters (Single and Double Mixed).

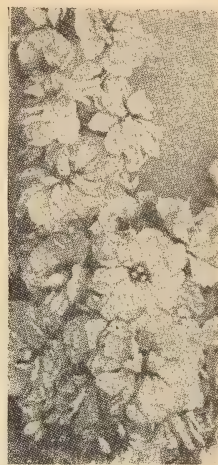
Also an ounce of the following:

Dwarf Mixed Nasturtiums

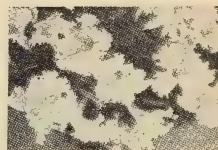
Special Mixture Sweet Peas (Spencer).

Total Value \$1.25

- Postpaid for 75c



Giant Stocks



Dainty Lady Petunias



Double Larkspur



Giant Pansy



Sweet Williams

Kemp's Bountiful Sure Crop Yellow Dent Field Corn

BECOMING MORE AND MORE POPULAR AS IT IS PLANTED OVER A WIDER AREA.

THE REAL VALUE OF THIS CORN IS IN ITS ABILITY TO GIVE YOU A CROP
UNDER NORMAL TO ADVERSE CONDITIONS. IT IS TRULY
THE FARMER'S FRIEND



ORIGIN. Mr. Geo. W. Kemp, General Manager of our nursery, has been selecting to a type of corn after making a definite cross of Reids Yellow Dent and the Mammoth Yellow Dent. His efforts were rewarded with almost 100% reproduction to type, as the same time giving a medium-sized stalk that produces to a maximum under all conditions. The ears are produced from three to five feet from the ground on the stalk and under good growing conditions will run largely to two well-developed ears to the stalk. We have never given this corn much fertilization, trying to instill in it the habit of producing a maximum crop on just average soil, and this we have succeeded in doing. It can be termed as a 100-day corn and will do equally as well on practically all types of soil.

In spite of the abnormally dry season, this corn came through practically a full crop this year and is the best corn we know of in the county and possibly in the state. The ears average long, with small to medium-sized cob and very deep grains.

We sell only the shelled corn for seed. All ears are carefully selected and the end grains shelled off before shipment to you. It is all tested for germination, which insures you of good stands. Rest assured the corn is right, or the Bountiful Ridge Nurseries would not offer it to you.

Half Peck, 60c; Half Bushel, \$1.50; 1 Bushel, \$2.50.

PEONIES

THIS FINE ASSORTMENT OF PEONIES AT EXTREMELY LOW PRICES

Now is Your Opportunity to Plant That Peony Bed of Choice Varieties

All varieties: 25c each; \$2.00 for ten plants. All 3 to 5 eye divisions.

FESTIVIA MAXIMUM. Large full bloom, pure white, with an occasional carmine spot; strong grower. One of the best early white varieties.

FLORAL TREASURE. Large compact flower of delicate pink borne in great profusion on erect stems. One of the best peonies for home and commercial use. Mid-season.

FELIX CROUSSE. Large, compact, deep rose red, and fragrant. Strong grower; free bloomer. Considered the best one-color red in cultivation. Mid-season.

EDULUS SUPERBA. Large, bright pink with slight violet shading at the base of the petals. Fragrant, early, strong grower, very free-bloomer. The best early commercial pink.

EDUARD ANDRE. Crimson, Maroon color. Very attractive. Mid-season.

L'ECLATANTE. Velvety crimson. A color one never forgets. Truly a beautiful mid-season peony.

LOUIS VAN HOUTTE. Deep rose red. One of the good late red peonies. Fragrant.

MESSONIER. Brilliant, rich crimson. A rival for Felix Crousse. One of the best mid-season red peonies.

MONS. DUPONT. Creamy white and very fragrant. A beautiful and delicately colored peony.

PHILOMELE. Yellow, fading to cream. Very fragrant. One of the few good yellow peonies.



FESTIVIA MAXIMUM PEONY

DWARF CANNAS

All roots strong 2 and 3 eye divisions, 10c each; 90c for 10; \$7.00 per 100.

YELLOW KING HUMBERT. A sport of King Humbert but with green foliage and golden-yellow flowers. Occasionally there will be plants with bronze foliage and scarlet flowers.

KING HUMBERT. Truly the King of Cannas. Its foliage, which is of large size and a deep bronze, is

striking. Flowers are borne in great profusion and are a rich coppery scarlet.

KING MIDAS. Finest yellow canna to date. Large heads of pure golden yellow. Vigorous grower.

THE PRESIDENT. Has no competitor as a red canna. The color is a rich glowing scarlet, flowers often 7 inches across on strong, erect stems well above the foliage. Foliage rich green.

ORNAMENTAL DEPARTMENT

FLOWERING SHRUBS

THE BEST OFFERED AT THE LOWEST PRICES IN OUR HISTORY
 BUYS YOU MAY NEVER BE ABLE TO DUPLICATE

In many cases it would be better to plant Shrubs in groups of several to one side of the lawn instead of following the method of planting one in a certain place and spoiling the effect of the open lawn. In most cases, three, six, eight or twelve of one variety should be used in a particular grouping. Several such groupings make an excellent border or foundation planting.

ALTHEA (Rose of Sharon). Double assorted colors; red, white lavender and blue. 2 to 3 feet, 25c each; \$2.00-10.

BUTTERFLY BUSH. Blooms profusely; lilac-color, tapering panicles. *No. 1 plants, 2-year, 18 to 24 inch, 30c each.

BEAUTYBUSH. General resemblance to both Weigela and Honeysuckle, beautiful trumpet-shaped flowers. Pale pink with orange veins in the throat. 18 to 24 inch, 45c each; 5 for \$2.00

INDIAN CURRANT. Valuable for planting in shady places; foliage is very persistent. The fruit is purplish-red. 18 to 24 inch, 25c each; \$2.00 for 10; 2 to 3 ft., 35c each; \$2.50 for 10.

SNOWBERRY. An upright, low-growing shrub with pink flowers. Showy white berries in fall. 18 to 24 inch 30c each; \$2.50 for 10; 2 to 3 ft., 40c each; \$3.00 for 10.

CREPE MYRTLE. Blooms throughout the summer great clusters of delicately fringed flowers. Perfectly hardy, as far north as New Jersey. We have pink and red. 18 to 24 inch, 40c each.

DUETZIA (Pride of Rochester). Produces white flowers tinged with rose; vigorous grower, profuse bloomer, earliest to bloom. 18 to 24 inch, 25c each; \$2.00 for 10; 2 to 3 feet, 30c each.

DUETZIA LEMOINE. Dwarf habit of growing. Literally covered with snow-white flowers. 18 to 24 inch, 40c each; \$3.50 for 10.

FORTUNE'S GOLDEN BELL (Forsythian Fortunei). Flowers bright yellow and appear before the leaves very early in the spring. 2 to 3 feet bushes, 30c each; \$2.50 for 10.

FORSYTHIA (Intermedia). Blooms early, frequently covered with golden flowers while the ground is still covered with snow. Not as tall as Fortunei. 2 to 3 foot plants, 30c each; \$2.50 for 10.

FORSYTHIA (Viridissima). Same habits as the Fortunei. Flowers deeper yellow and somewhat twisted. 2 to 3 foot plants, 30c each; \$2.50 for 10.

FLOWERING ALMOND, DOUBLE PINK (P. jap. flore pleno rosea). A beautiful tree; covered in May with rose-colored blossoms like small roses; hardy. 18 to 24 inch, 40c each; \$3.50 for 10.

HONEYSUCKLE, PINK TARTARIAN (L. Tartarica rosea). Pink flowers that make a lovely contrast with the foliage. Fine 2 to 3 foot bushes, 30c each; \$2.50 for 10.

HONEYSUCKLE, RED TARTARIAN (L. T. var. rubra). Blooms early in the spring; flowers a beautiful red. Fine 2 to 3 foot plants, 30c each; \$2.50 for 10.

EUROPEAN CRANBERRY BUSH. Handsome, green foliage; large bunches of crimson berries throughout winter. The flowers are pure white. 2 to 3 ft., 40c each.

JAPAN QUINCE, SCARLET (C. Japonica, also Pyrus Japonica). Flowers a bright scarlet crimson, borne in great profusion in early spring; foliage bright glossy green. 18 to 24 inch, 40c each; \$3.50 for 10.

HYDRANGEA ARBORESCENS STERILIS (Hills of Snow). Handsome foliage and snow white, ball-shaped clusters of flowers. Blooms the greater part of summer. 18 to 24 inch, 30c each; \$2.50 for 10.

HYDRANGEA (Paniculata Grandiflora). A shrub; flowers borne in huge panicles; light pink; changing to brown later in the fall; blooms in August and September. 18 to 24 inch, 35c each; \$3.00 for 10.

HYDRANGEA P. G. (Tree Form). Same as above except trained to single stem with well-formed top. Continues to grow like a tree, drooping towards ground when in bloom. 3 to 4 foot stems, well topped, \$1.00 each; \$9.00 for 10.

HYDRANGEA OTAKSA. Flowers generally blue, with a few exceptions, when they are a delicate pink. A Japanese variety. 2-year, No. 1 plants, 60c each.

LILAC, WHITE (S. Vulgaris Alba). Too well known to need description; its flowers are white and fragrant. Fine 18 to 24 inch, 40c each; \$3.00 for 10.

LILAC, PURPLE (S. Vulgaris). The well-known purple variety; always a standard sort. Fine 2 to 3 feet, 40c each; \$3.00 for 10.

LILAC (Persian). A favorite among the purple lilac, having a rich color and unusually fragrant. 18 to 24 inch, 50c each; \$4.00 for 10; 2 to 3 feet, 70c each.



EVERBLOOMING BUTTERFLY BUSH

FRENCH HYBRID LILACS

LUDWIG SPAETH. Single, very rich dark purplish red. 18 to 24 inch, 50c each; 2 to 3 feet, 60c each.

PRESIDENT GREVY. Double, bright blue. 18 to 24 inch, 50c each; 2 to 3 feet, 60c each.

SNOWBALL COMMON. The old-fashioned Snowball; pure white flowers are produced in May and June. Fine 2 to 3 feet, 45c each; \$4.00 for 10.

JAPANESE SNOWBALL. Pure white blossoms, with heavy dark leaves; shows up remarkably well, when planted as a specimen or in a shrub group. 18 to 24 inch, 50c each.

PINK KOREAN SNOWBALL. Blooms profusely in early spring; flowers are pink in color and heavily laden with spicy fragrance. 12 to 18 inch strong plants, 80c each; \$7.50 for 10.

OAK LEAF HYDRANGEA. One of the best of the newer types of hydrangeas. Upright to drooping in growth, attractive foliage. Blossoms are compact large pinnacles similar to hydrangea P. G. coming early in the season and remaining on plant until September. Flowers changing in color from white to pink. A beautiful plant that you will enjoy. 2 to 3 ft. plants, 60c each; 10 for \$5.00

SPIREA ANTHONY WATERER. Very popular low-growing bush, blooms all summer. Flower deep rose color. 35c each; \$3.00 for 10.

SPIREA VAN HOUTTE (S. Van Houttei). This is the most popular of all the Spireas. Its gracefully arching branches heaped as they are with the white blossoms in spring and its thriftiness under the most trying conditions are the reasons for its popularity. 18 to 24 inch, 20c each; \$1.50 for 10; \$10.00 for 100; \$50.00 for 1000; 2 to 3 feet, 30c each; \$2.50 for 10.

SWEET SCENTED SHRUB or CALYCANTHUS. Desirable shrub. Wood is scented, the foliage rich, and flowers of a rare chocolate color, having a peculiar delightful odor. The old fashioned shrub brush that used to be in every yard. 2 to 3 feet, 40c each; \$3.50 for 10.

PHILADELPHUS, Grandiflora (Mock Orange). Large spreading bush, graceful drooping branches; flowers slightly fragrant. 2 to 3 feet, 30c each; \$2.50 for 10.

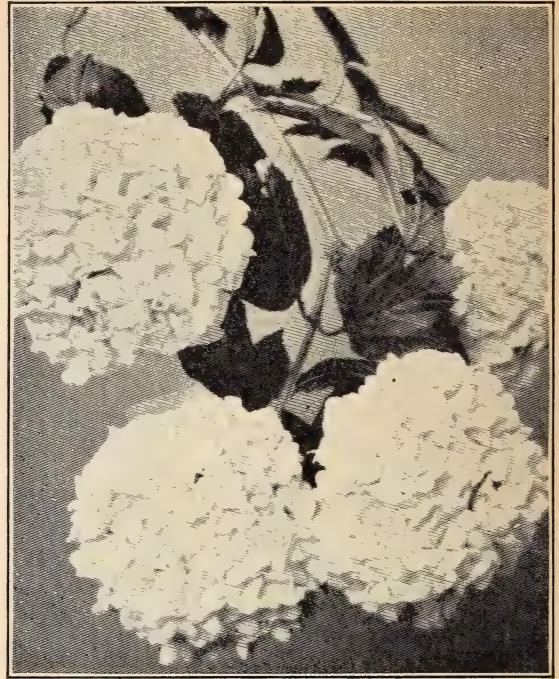
PHILADELPHUS, Virginalis (New). Finest of the new Mock Oranges. Very large flowers, blooms throughout the summer. 2 to 3 feet, 30c each; \$2.75 for 10.

PHILADELPHUS, Coronarius (Mock Orange). Pure white, very fragrant flowers; one of the first to bloom. 2 to 3 feet, 30c each; \$2.50 for 10.

TAMARIX AFRICANA. Upright habit, with airy, slender leaves and a profusion of dainty, soft pink flowers in May. 1½ to 2 feet, 30c each.

WEIGELA EVA RATHKE. Flowers a brilliant crimson; a beautiful clear, distinct shade. 18 to 24 inch bush, 40c each; \$3.00 for 10.

WEIGELA ROSEA. An elegant variety with fine rose-colored flowers appearing in June. 18 to 24 inch, 30c each; \$2.50 for 10.



COMMON SNOWBALL

ORNAMENTAL HEDGES

REAL BEAUTY AND DISTINCTION AT LOW COST

THIS IS WHAT YOU CAN HAVE BY PLANTING JUDICIOUSLY OF THE HEDGE PLANTS WE OFFER YOU HERE.

THERE IS A PLANT FOR EVERY PURPOSE—SELECT THEM AND PLANT AT THESE LOW PRICES

NEW RED LEAF BARBERRY. Similar to Barberry Thunbergii but the foliage of this new variety is of a rich, lustrous, bronzy red. Becomes more brilliant throughout the summer. Scarlet berries remain on the plant the entire winter. Should be planted in full exposure to the sun. 12 to 15 inch, 30c each; \$25.00 per 100.

JAPANESE BARBERRY. A pretty dwarf species. Handsome foliage of bright green leaves which turn to the most brilliant shades of coppery red and orange in autumn and which remain on until late Fall. The slender, graceful little branches are lined with small scarlet berries which hang on until well into winter. (Does not harbor wheat rust). 12 to 18 inches, \$1.25 per 10; \$12.00 per 100; 18 to 24 inch, heavy, \$3.00 per 10; \$25.00 per 100.

CALIFORNIA PRIVET. California Privet will give you living fences for less than you can build them of wire. Can be sheared into any shape or size. A few dollars invested in California Privet will add many times their value to your property. 12 to 18 inches, 40c per 10; \$3.00 per 100; \$25.00 per 1000; 18 to 24 inches, 60c per 10; \$4.00 per 100; \$35.00 per 1000.

AMOUR RIVER PRIVET NORTH (L. Amurense). A valuable ornamental shrub for hedges and borders; very hardy; foliage glossy green, and holds its color almost the entire year; will stand shearing to any extent. Well branched. 12 to 18 inch, \$1.00 for 10; \$8.00 for 100; 18 to 24 inch, \$1.25 for 10; \$10.00 for 100.



JAPANESE BARBERRY HEDGE

"DELAWARE PLANTER WELL PLEASED"

Wyoming, Delaware
March 9, 1937

Gentlemen:

We wish to thank you for the fine quality trees with which you filled our order.

H. C. Richardson

"FIRST-CLASS AND VERY SATISFACTORY"

The Hollow, Virginia
December 21, 1936

Dear Sirs:

Received my fruit trees in first-class condition which were very satisfactory.

G. B. Gwyn

Japanese Flowering Cherry

THE BEAUTY TREE OF AMERICA
TODAY



JAPANESE WEEPING CHERRY

KANZAN. Large, double, pink blossoms borne in profusion. Tree vigorous and upright in growth. One of the best of the pinks. 2-year 6-foot trees, \$2.00 each.

AMANAGAWA. Large double blossom, not so intense pink as Kanzan; forms a beautiful tree and should be in your collection. 2-year, 6-foot trees, \$2.00 each.

MT. FUJI. Without a doubt the very best white flowering cherry. We have never seen such clusters of snow-white double blossoms as this tree bears in the spring. Tree upright in growth, but droops naturally when in bloom. Large 2-year, 6-foot trees, \$2.00 each.

NADEN. Large pale pink flowers, being very double. Tree upright and spreading; presents a most beautiful sight when in bloom. 2-year, 6-foot trees, \$2.00 each.

KOFUGEN. One of the most profuse blooming flowering cherry. Flowers are very large and very double, sometimes being almost pure red. Tree vigorous, spreading. Should be in every planting if you wish real beauty. 2-year, 6-foot trees, \$2.25 each.

SUBHIRELLA. Weeping double flowering cherry. Its graceful habits of growth and profusion of large double delicately colored pink blossoms in early spring make it a favorite among the weeping cherries. 5 to 6 ft., stems, 2-year grafted heads, \$2.75 each.

Other Desirable Flowering and Ornamental Trees and Shrubs

JAPANESE BLOOD LEAF MAPLE. We offer this rare and beautiful tree in grafted stock. A good dwarf tree with rich purplish red leaves. All plants are selected to type. 18 to 24 inch, \$2.50 each; \$20.00 for 10.

PAUL'S SCARLET THORN (*Crataegus Oxycantha Splendens*). Flowers deep crimson-scarlet, very double. Most attractive trees for specimen planting or groups. Three to four foot size, \$1.25 each.

BECHTEL'S DOUBLE FLOWERING CRAB (*P. Augustifolia*). One of the most beautiful of the flowering crabs; tree medium size, covered in early spring with large, double, fragrant flowers of a delicate pink color. 3 to 4 feet, 75c each; \$7.00 for 10; 2 to 3 feet, 60c each.

JUDAS TREE or RED BUD (*C. Canadensis*). A medium sized tree with large, irregular head and perfect heart-shaped leaves. The profusion of delicate reddish-pink blossoms with which it is covered in early spring before the foliage appears make it one of the finest ornamental trees. 3 to 4 feet, 50c each.

DOGWOOD, WHITE FLOWERING (*Cornus Florida*). Large white flowers appear in the spring before the leaves. Scarlet fruits are borne in the autumn and the leaves turn to a deep red. 3 to 4 feet, 50c; 4 to 5 ft., 80c.

DOGWOOD (Pink Flowering). A colored form of the native species Dogwood. Same habits of growth, period of bloom and general behavior; bright, deep rose-colored blossoms. Nice 2 to 3 feet trees, \$1.00 each; \$9.00 for 10; 3 to 4 feet, \$1.50 each; \$13.50 for 10.

MAGNOLIA SOULANGEANA. One of the best known of the deciduous Magnolias. Perfectly hardy and a very beautiful plant when in bloom. Blossoms are large purplish-pink, and white and usually appear on the plant just before the leaves come out. Should be transplanted in Early Spring for best results. 2-3 ft. Light Plants, \$1.50 each.

Weeping Ornamental Trees

TEA'S WEEPING MULBERRY (*Morus Tartarica Pendula*). A graceful hardy tree, forming a umbrella-shaped head, with willowly branches drooping to the ground; foliage small, lobed, and fresh, glossy green. First-class 2-year heads, 5 to 6 foot stems, \$2.00 each.

WEEPING WILLOW, BABYLONIAN (*S. Babylonica*). The well-known common weeping willow; makes a large tree covered with drooping branches. 6 to 8 ft., \$1.00 each.

CUT LEAF WEEPING BIRCH. One of the most beautiful weeping trees now offered. Pyramidal in growth habit. Dark green leaves and shiny white bark. 6 to 8 foot trees, \$1.60 each.

PLEASE NOTE

We have many additional varieties of Evergreens, Shade Trees and Flowering Shrubs in larger and specimen sizes, which are not listed in this catalog. We will be very glad to quote prices, if you will submit variety and grade of stock wanted.

"EVERY TREE AND PLANT GROWING DUE TO
VIGOROUS HEALTHY STOCK SHIPPED"

Rocky Mount, N. C.
March 12, 1937

Gentlemen:

Last Fall I sent you an order for sixty miscellaneous fruit trees together with an order for a number of small fruit plants. I followed your directions for planting very carefully and I am glad to be able to advise you now that I did not lose a single tree or plant. I do not give myself credit for these remarkable results but feel that it can only be due to the vigorous and healthy stock you shipped me.

Thanks for getting my little orchard and fruit garden off to a wonderful start.

Ronald E. Stevens

"BOYSENBERRY AND STRAWBERRY PLANTS
WELL ROOTED AND IN FINE CONDITION"

Marcella, Arkansas
March 15, 1937

Gentlemen:

I am writing in regard to the Berry Plants. We received the Boysenberries three weeks ago and set them same day. I have never seen finer rooted plants of any kind. Received the Strawberry Plants one week ago, and have them set on good strong berry land and in fine shape. They were also fine and reached here in good condition.

E. E. Martin

SHADE TREES

We give special prices for street and park planting using fifty trees or more. Write to us, giving quantities and grades desired.



NORWAY MAPLE

BIRCH WHITE (*Betula Alba*). Erect growing. Branches slightly drooping and attractive bark which is almost white. 6 to 8 feet, \$1.00 each.

CHINESE ELM. Tree upright, extreme end of branches drooping. Very dense, making good shade. Fast growing and resistant to drought and cold. 5 to 6 feet, \$1.00 each; 6 to 8 feet, \$1.25 each.

ELM, AMERICAN WHITE (*U. Americana*). A magnificent tree growing 80 to 100 feet high with drooping, spreading branches. 8 to 10 feet, \$1.50 each; 6 to 8 feet, \$1.00 each; \$9.00 for 10.

MULBERRY, NEW AMERICAN. Large fruit; black; delicious flavor; very attractive lawn tree, large leaves. Rapid grower, hardy. 6 to 8 feet, \$1.00 each.

MAPLE, NORWAY (*A. Platanoides*). A large, handsome tree, with broad, deep green foliage; has a very compact growth. A valuable tree for parks, lawns or streets. 6 to 8 feet, \$1.25 each; \$10.00 for 10; 8 to 10 feet, \$1.75 each; \$15.50 for 10; 10 to 12 feet, \$2.50 each; 12 to 14 feet, \$3.50 each.

MAPLE, SILVER-LEAFED or SOFT (*A. Dasycarpum*). A rapid growing tree of large size, irregular, rounded form; foliage bright green above and silver beneath; a favorite street and park tree. 6 to 8 feet, 50c each; 8 to 10 feet, 80c each; 10 to 12 feet, \$1.00 each; \$9.00 for 10; 12 to 14 feet, \$1.50 each.

MAPLE, SUGAR or HARD (*A. Saccharum*). A well-known native tree valuable both for the production of sugar and wood; very desirable. 6 to 8 feet, \$1.00 each; 8 to 10 feet, \$1.50 each; 10 to 12 feet, \$2.00 each; 12 to 14 feet, \$2.50 each.

ORIENTAL PLANE, or EUROPEAN SYCAMORE (*P. Orientalis*). A rapid-growing, erect tree with bright green foliage; much more esteemed than the American variety as a shade tree, very desirable for parks, streets and lawns. 8 to 10 feet, \$1.50 each; \$13.00 for 10.

POPLAR, LOMBARDY. Grows to immense height. Used for roadside planting or to break the monotony of low, round-top trees. Also beautiful as a screen or windbreak. 6 to 8 feet, 75c each; 4 to 6 feet, 50c each; \$4.00 for 10; \$30.00 for 100.

SCHWEDLER'S PURPLE LEAVED MAPLE. Probably our best, large growing purple leaved tree, of the sugar maple type. 6 to 8 feet, \$1.75 each; \$16.00 for 10.

TULIP TREE (*L. Tulipifera*). A magnificent rapid-growing tree with light green, glossy fiddle-shaped leaves and greenish-yellow, tulip-shaped flowers. 8 to 10 feet, \$1.50 each; 6 to 8 feet, \$1.25 each.

CLIMBING VINES

COVER THOSE BARE, UNSIGHTLY WALLS AND TRELLISES WITH BEAUTIFUL CLIMBING VINES—WE LIST A CLIMBING VINE FOR EVERY PURPOSE

PURPLE WISTERIA. Flowers light purple and blue in early spring, borne in large drooping clusters. Well adapted for arbor plantings. Price, 2-year strong plants, 40c each; \$3.50 per 10.

WHITE WISTERIA. Resembles the purple variety, but with white flowers. Hardy and very desirable. Price, 2-year strong plants, 40c each; \$3.50 per 10.

CLEMATIS PANICULATA (Small Flowering Clematis). A great novelty from Japan. This variety of Clematis has proven to be one of the most desirable, useful and beautiful of hardy garden vines. Price, 2-year, 40c each; \$3.00 for 10.

CLEMATIS JACKMANI (Large Flowering Clematis). It is a strong grower, and produces a mass of intense violet-purple flowers 4 to 6 inches in diameter from July until October. 2-year, 70c each; \$6.00 for 10.

HALL'S JAPAN HONEYSUCKLE (*L. Halleana*). A strong, vigorous vine with pure white flowers, changing to yellow; foliage remains green well into winter; very fragrant and covered with flowers almost the entire season. 2-year strong plants, 30c each; \$2.50 for 10.

ENGLISH IVY, HEDERA HELIX. This popular evergreen vine with medium size dark green leaves is extensively used in this country for covering brick and stone walls and dwellings. 2-year, 30c each; \$2.50 for 10.

BOSTON IVY. Foliage handsome in summer, changing to crimson-scarlet in autumn. Clings to walls and fences; fine for brick and stone. 2-year strong plants, 30c each; \$2.50 for 10.

KUDZU VINE. Large foliage and dense shade, growing 50 feet in one season. Flowers plentiful in Aug-

ust; rosy-purple, pea-shaped—in small racemes. Good porch vine wherever it is able to withstand the cold winters. 2-year, 40c each; \$3.00 for 10.

SILVER LACE VINE. A quick growing climbing vine that can certainly be recommended for its thriftiness and beauty. The foliage is heavy, and it is literally covered with white, silvery blossoms from early August until fall. 60c each; \$5.00 for 10.



SILVER LACE VINE

HARDY EVERGREENS

EACH PLANT A BEAUTY, OUR PRICES LOWER THAN EVER



GLOBE ARBORVITAE

ARBORVITAE (American). Very hardy, grows rapidly, forms a beautiful hedge, very dense. 3 to 4 feet, \$1.50 each; 4 to 5 feet, \$2.00 each.

ARBORVITAE (Pyramidalis). A superb, hardy sort, very compact habit and grows in a perfect column. 18 to 24 inch, \$1.00 each; 24 to 30 inch, \$1.25 each.

ARBORVITAE GLOBE (Thuja Globosa). A perfect globe when well grown, the spread usually equaling the height. Foliage of light green. 12 to 15 inch, \$1.00 each; 15 to 18 inch, \$1.35 each.

ARBORVITAE, BERCKMAN'S GOLDEN (Biota Anrea Nana). Beautiful conical form, very dense and compact. A dwarf type with golden foliage. 10 to 12 inch, 90c each; 15 to 18 inch, \$1.35 each.

CRIPPS GOLDEN CYPRESS, (Ret. Obtusa Crispi). One of our finest, slow growing, intense yellow evergreens. Can be sheared readily. 10 to 12 inch, 80c each.

SAVIN JUNIPER. Its branches are spreading, dense, thickly covered with branchlets and heavily clothed with short, tufted foliage. 15 to 18 inch, 90c each; 18 to 24 inch size, \$1.25 each.

IRISH JUNIPER. Very erect forming a column of deep green foliage; a general favorite for its beauty and hardihood. 18 to 24 inch, 90c each; 24 to 30 inch, \$1.35 each.

PFITZERIANA JUNIPER. Very hardy, valuable spreading variety, with silvery green color. Both the main stems and lateral shoots have a light, feathery appearance. 15 to 18 inch, 90c each.

SPINY GREEK JUNIPER (J. excelsa stricta). An unusually attractive dwarf pyramidal form with very compact bluish-green foliage. Vigorous in growth, and not particular as to soil. 15 to 18 inch, \$1.00 each; 18 to 24 inch, \$1.50 each.

ANDORA JUNIPER. Grows close to the ground. During summer has a silver reflex to the otherwise green foliage. In winter it turns a purplish cast. 15 to 18 inch, 75c; 18 to 24 inch, \$1.25 each; \$10.00 for 10.

TAXUS CUSPIDATA (Japanese Yew). One of the hardiest of Yews. Bushy, upright, spreading nature, with rich green foliage. A beautiful, medium-sized specimen, well suited for foundation planting. Price 18 to 24 inch, \$1.50 each; 24 to 30 inch, \$1.75

HEMLOCK. An elegant, pyramidal tree, with drooping branches and delicate dark foliage like that of the Yew; beautiful lawn tree and makes a highly ornamental hedge. 24 to 30 in., \$1.25 each; 30 to 36 inch, \$1.50 each; 36 to 42 inch, \$2.00.

Hardy Broad-Leaved Evergreens

RHODODENDRON CAROLINA (Carolinum). This hardy Rhododendron with clear, pink flowers borne in great masses is the first of the Rhododendrons to bloom. Heavy Plants, 2 to 3 feet, \$2.00 each.

RHODODENDRONS CATAWBA (Catawbiense). Medium, large-growing Rhododendron and very hardy. Valuable for foundation work in shady places. Follows the Carolina in blooming, large clusters of rosy lavender flowers. Heavy plants, 2 to 3 feet, \$2.00 each.

RHODODENDRON ROSEBAY (Maximum). The favorite of many. Almost pure white flowers borne in great profusion late in the spring. Large, dark green foliage is unusually attractive. Grows more compact than other Rhododendrons; extremely hardy. 2 to 3 feet, \$2.00 each.

MAGNOLIA GRANDIFLORA. Our most beautiful evergreen trees. Immense, pure white flowers in mid-summer are very fragrant. Natural pyramidal growth, large, dark green foliage, very handsome. Not hardy North of southern New York. 3 to 4 feet, \$2.00 each.

AMERICAN HOLLY. The Christmas Holly. Its bright green, spiny leaves and brilliant scarlet berries make it one of our handsomest evergreen shade trees. Nursery grown, 2 to 3 feet, \$1.50 each; 3 to 4 feet, \$2.00 each.

ABELIA GRANDIFLORA. Foliage dark green, glossy, its arching branches have a distinct tinge of red. From May until Frost this plant is covered with pinkish-white, bell-shaped flowers. 18 to 24 in. 60c each; \$5.00 for 10; 2 to 3 ft., \$1.00 each; \$7.50 for 10

NANDINA DOMESTICA (Heavenly Bamboo). A very showy shrub of medium height with large clusters of small red berries in the autumn. Its dark green foliage assumes a gorgeous orange red or crimson color in winter. Thrives well in any well-drained, loamy soil, and is very hardy. One of the plants which is

used in all the better class of landscape work. 18-24 in., \$1.25 each.

SCOTCH BROOM. A most pleasing and attractive shrub. The bright green of the trunk and branches makes this shrub look like an evergreen. Flowers rich cream in color cover the branches abundantly. Medium early and continues to bloom for about six weeks. 18 to 24 in., heavy, 3 yr., \$1.00 each.

BOXWOOD

BOXWOOD SEMPERVIRENS. A compact grower, thrives in any soil, and does well in shady places. 12 to 15 inch, \$1.00 each; \$9.00 for 10.

SUFFRUTICOSA (True Dwarf Box). For edging the borders of flower beds or for planting along walks. Retains its dwarf size, never growing tall. 4 to 6 inch, \$2.25 for 10; \$20.00 per 100; 6 to 8 inch, 35c each; \$36.00 per 100.

Hardy Azaleas

AMOENA. A dense, dwarf-growing evergreen shrub. Semi-double flowers of bright, cheerful rosy-purple, produced in great numbers. 12 to 15 inch, \$1.25 each; 10 to 12 inch, \$1.00 each.

HINODEGRI. Is of broad, spreading habit; with beautiful evergreen foliage and many fiery-red, single flowers. Bushy plants, 10 to 12 inches, \$1.00 each; 12 to 15 inch, \$1.25 each.

CALENDULACEA (Flame Azalae). The blossoms range from flame color through shades of red and yellow, remain in bloom for several weeks. It is not an evergreen. 18 to 24 inch, \$1.00 each; \$9.00 for 10.

Successful Planting, Pruning, Care

Be sure to remove label before tree begins to grow or it will be fatally injured through strangulation.

In presenting these instructions to our patrons, we would earnestly request that they give the most careful attention to the details. They have been compiled with a view of making them as simple as possible. Having fulfilled our part of the contract by delivering first-class stock in good condition, with full instructions how to care for it, the fault is not ours if any of our customers should lose a portion of their stock. Experience has taught us that purchasers frequently lose Nursery stock through neglect; and we have taken the precaution to send a copy of our Transplanting Directions to every customer, so that none may claim that they do not know how to plant and care for their stock.

We guarantee to deliver the stock in good condition, and could we plant and care for it for the first three months, would willingly insure the growth of every tree and shrub sent out. We seldom lose a plant, even during the summer for fall delivery, and the stock is out of the ground for many weeks. Anything that is cultivated in the earth cannot live without nourishment and care.

CARE OF STOCK

The bundles should be opened immediately, the roots dipped in water, then heeled in moist ground, so that the mellow earth will come in contact with the roots and thoroughly protect them from the air, having the earth tramped solid about them.

When ready to plant take up only a few at a time, puddle the roots, and do not allow them to lie exposed to the sun or air.

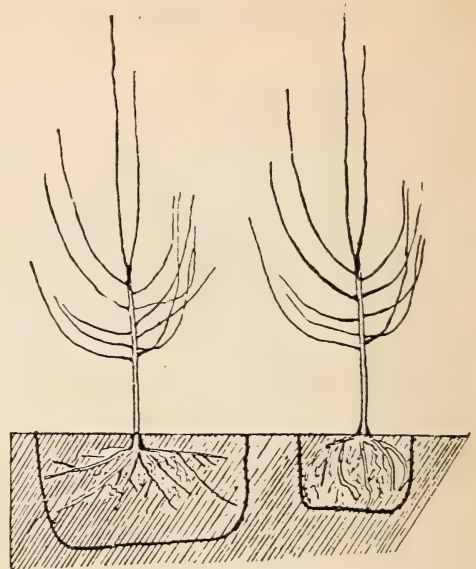
The ground should be carefully prepared by deep plowing and firming down with a disc and harrow.

PLANTING

The holes for planting must be large enough to receive the roots freely, without cramping or bending them from their natural position. All broken or mutilated portions of the roots must be cut off so as to leave the ends smooth and sound. All trees should be planted two or three inches deeper than they stood in the nursery row; pack the soil very firmly about the roots by tramping with the feet or post tamper, being careful not to bark or break the roots. Leave three inches of the surface soil loose to serve as a mulch. If the ground is very dry apply one to two pails of water before this soil mulch is in place, and after the water has soaked away it can then be placed over the moist soil. Never put manure so as to come in contact with the roots of any plant or tree.

PRUNING

Apple and Pear—Select from three to five of the branches to form the permanent head of the tree. These branches should be well distributed around the trunk, and at a safe distance apart up and down the trunk. If two branches come out, one exactly opposite the other, forming a crotch, a split may occur at this weak point in later life when the tree is full of fruit. Shorten these selected branches to about five buds, cutting the branches just above a bud that points outward. Remove all the other branches close to the trunk, leaving no stub longer than one-eighth to one-quarter inch. Also shorten back two-thirds the central leader of the tree, if one exists, else the tree assumes a too upright growth for best results in later life.



Almost Sure to Live

Almost Sure to Die

Cherry—Five or six good limbs, well distributed around the trunk, will be sufficient to form a well balanced top. The limbs left after pruning should not be cut back so severely as recommended for some other classes.

Plum—Cut back all branches to about two or three buds. After the tree has grown for a year, remove all but four or five branches, but do not cut them back. These buds will form the permanent framework for the top and subsequent growth may be pruned to meet the requirements or taste of the planter.

Peach—These should be planted immediately on delivery; or, if not prepared to do so, the roots should be buried in the ground. They will not stand exposure to the sun and air, and many are lost simply for the want of care. As soon as planted, cut back all side branches to within two or three inches of the main stem. Make this the invariable practice, and never deviate from it if you wish to save your trees. The growth will be much more rapid and vigorous in consequence of this pruning, and by strictly adhering to it, and by immediate planting or covering the roots in the soil, very few, if any, trees will be lost. Peaches like all other stock we deliver, will be in fine condition, having been carefully handled and kept from exposure by us. If you do not follow our directions and meet with loss, the fault will be entirely with you.

Grapes—These should be planted ten to twelve inches deep in holes large enough to admit roots without curling them, pressing soil solid about roots. Cut vines back to within three or four buds of the roots. Keep the ground clean by cultivating; if impossible to cultivate, mulch. Prune in February or early March, before there are any signs of new growth—hence the importance of annual and intelligent pruning.



Newly set 2-year
Apple ready to be
pruned



Same Apple
Tree pruned



Newly set Peach
ready to be
pruned



Same Peach pruned
Prune 1-year Apple
same way

Asparagus—Prepare ground by deep plowing or spading. To have it ready early it should be planted on light soil. The sprouts are not usually cut for the market until the second year after planting, except to mow down the canes in the fall or spring. Plant from four to five inches deep, covering with only three inches of soil at first, and cover the remainder as the plants grow. The rows should be five feet apart, with the plants set two feet apart in the row. Broadcast about five bushels of salt and three hundred pounds of Nitrate of Soda to the acre in March and give it a good top dressing of stable manure in November.

Rhubarb—Prepare ground as for Asparagus. Set the plants with crown or eye two inches under ground. Plant three feet apart each way. Mulch in winter. Give clean cultivation the same as for any other crop.

FOR ROSES OR GRAPES

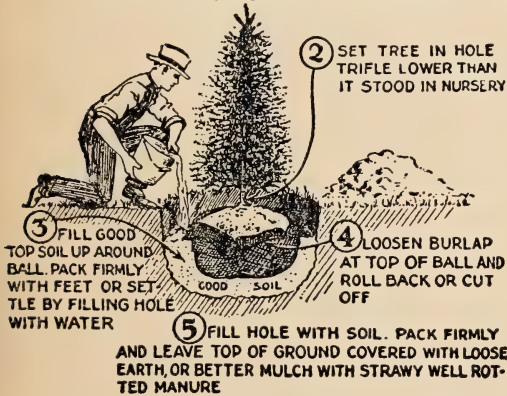


Planted too shallow

Planted just right

How to Plant Evergreens

- 1) Dig hole a foot larger and deeper than ball of earth. Provide good, loamy top soil to fill around ball.



Barberry-Spirea—Should be planted in the same manner as shrubs, either in trenches for hedge or as groups or individual specimens. Cut back and thin out one-half of top wood.

SHADE TREES

Ornamentals—Dig holes large enough to accommodate all roots without bending or cramping. Fill the hole with good top dirt and firm it hard. When the hole is three-fourths full allow a bucket or more of water to seep away around the roots, after which the hole may be entirely filled. It is well to mulch the tree immediately to prevent drying out. **Prune all limbs back to five or seven good buds**, even though the appearance of the tree is impaired by such treatment. Water trees during the summer months and give them plenty of attention until they have become well established. Large sizes of shade trees can often be staked to advantage until their roots have obtained good anchorage in the soil.

FALL PLANTING

When set in autumn, a mound of earth, a foot or more in height, must be raised about the trees. This is very essential, as it keeps them from being swayed by the winds or thrown out by the frost during the winter. It should be removed in the spring.

In sections where the winters are extremely severe, trees procured in the fall can be best cared for by covering the roots with earth during the winter and planting them in the spring.

To insure success, select a spot where no water will stand during the winter, having no grass near to invite mice. Dig a trench deep enough to admit one layer of roots, and sloping enough to permit the tree to lie at an angle of not more than 30 degrees with the ground. Having placed one end of the roots in this trench, cover them with mellow earth extending well up on the tree and see that this is firmly packed. Then add another layer of trees, overlapping the first, continuing as at first until they are all heeled in. As soon as this is done, cover the tops so with evergreen boughs that they will be thoroughly protected from winds.

SPRAYING

There are four distinct types of troubles to combat, i. e.: Chewing insects, sucking insects, scale insects and fungous diseases. Chewing insects are controlled with a stomach poison, some form of arsenic (lead arsenate), sucking insects (lice or aphids) by body contact poison (nicotine), or miscible oil (kerosene emulsion), and fungous diseases by lime-sulphur solution or Bordeaux mixture. Be sure you know what you are spraying for, since arsenate of lead will not control lice or aphids, nor will nicotine or kerosene emulsion control apple worms, and neither of these will have any effect on apple scab or other fungous diseases. Lime-sulphur is used as a dormant spray for scale, insects and also for fungous. In spraying the apple, keep in mind the two main apple troubles, the codling moth and apple scab, and, in controlling these, most other troubles are immediately controlled. Lead arsenate and lime-sulphur or Bordeaux mixture are the sprays to use. For further information write your State Department.

Distance for Planting—Square Method

Distances for planting different kinds of fruit trees, etc., square method:

- Peach.** 20 to 26 feet apart each way.
- Standard Apple.** 25 to 40 feet apart each way.
- Cherry (sour).** 22 to 36 feet apart each way.
- Cherry (sweet).** 24 to 40 feet apart each way.
- Standard Pear.** 24 to 40 feet apart each way.
- Plum.** 20 to 24 feet apart each way.
- Pecans and Black Walnuts.** 40 ft. to 80 ft.
- English Walnut.** 30 ft. to 40 ft.
- Filberts.** 6 ft. to 8 ft.
- Grape Vines.** 8 to 10 feet apart, 8 feet apart in row.
- Blackberries.** Rows 6 feet apart, 4 to 6 feet apart in row.
- Raspberries and Dewberries.** Rows 4 feet apart, 4 to 5 feet apart in row.
- Strawberries Field Culture.** Rows 3½ to 4 feet apart, 15 to 30 inches apart in row.
- Strawberries Garden Culture.** Rows 24 to 30 inches apart, 12 to 18 inches in row.
- Asparagus (field grown).** Rows 5 feet apart, 18 to 24 inches apart in row.
- Asparagus (in beds).** Rows 2 feet apart, 12 to 18 inches in row.

To find number of trees or plants per acre, use the rule below.

NUMBER OF TREES OR PLANTS TO THE ACRE (Square System)

RULE—Multiply the distance in feet between the rows by the distance the plants are; number of square feet for each plant, which, divided into the number of square feet in an acre (43,560), will give the number of plants or trees to the acre.

Distance	No. of Trees	Distance	No. of Trees	Distance	No. of Trees
1 foot apart each way.....	43,560	9 feet apart each way.....	537	17 feet apart each way.....	150
2 feet apart each way.....	10,890	10 feet apart each way.....	435	18 feet apart each way.....	134
3 feet apart each way.....	4,840	11 feet apart each way.....	360	19 feet apart each way.....	120
4 feet apart each way.....	2,722	12 feet apart each way.....	305	20 feet apart each way.....	108
5 feet apart each way.....	1,745	13 feet apart each way.....	257	25 feet apart each way.....	69
6 feet apart each way.....	1,210	14 feet apart each way.....	222	30 feet apart each way.....	48
7 feet apart each way.....	888	15 feet apart each way.....	193	35 feet apart each way.....	35
8 feet apart each way.....	680	16 feet apart each way.....	170	40 feet apart each way.....	27

If planted in beds or groups the ground should be spaded deeply and well worked. If shrubs are set as individual specimens they should be planted the same as trees.

Set shrubs at the same depth as they stood in the nursery row, or with their crowns at about the surface of the ground. Water the plants well during the hot, dry weather and keep the ground well stirred around them. Most shrubs require judicious pruning at planting time, and subsequently, when shrubs are planted, it is advisable to cut them back from one-half to two-thirds, with but few exceptions.

HEDGES

Privet—Dig trench twelve inches deep or more and set the plants four to six inches deeper than they stood in the nursery row, or deep enough so the lower branches will be four to six inches under the ground. Such deep planting will make a compact hedge down to the ground line, but if the plants are set shallow there will always be undesirable open spaces at the base of the hedge. Some planters set Privet in a double row, eight to ten inches apart each way, which makes a very dense hedge. Cut Privet back to six inches when planting to promote thick new growth at the lower part of the plant.

HOW TO ORDER FROM BOUNTIFUL RIDGE NURSERIES

5% Cash Discount for Orders Received Before April 1st

EXCEPT ON STRAWBERRY PLANTS WHICH ARE NET AT PRICES LISTED

FREE DELIVERY ON ALL ORDERS OF \$50.00 OR MORE UP TO 500 MILES FROM OUR NURSERY, EXCEPT ON STRAWBERRY PLANTS

OUR SHIPPING SEASON

We pack and ship all through the winter to Southern States. Our regular spring shipping and packing season usually opens here about the 15th of February and continues until May 10th. Our fall shipping season opens about October 15th and continues to Northern points until December 1st.

OUR TERMS

Our terms are cash except in large orders when satisfactory reference is given; then one-third the amount of the order must be sent and balance on arrival of trees at depot. On early orders one-third the amount can be sent in and balance a few days before shipment. Prices in this catalog are for the present season, spring of 1938 only.

GRADING AND OUR GUARANTEE

We guarantee every tree to be as represented in grade and quality, and if upon arrival you do not find our trees to be exactly as we say they are, return them to us securely packed and we will refund to you every dollar you have paid us for them. This is as fair as we can offer.

Do not confuse this well graded stock with stock offered to you at a lower price with only height mentioned. Our stock is graded both in height and thickness, the only true way to grade nursery stock.

ORDER EARLY

We earnestly request our patrons to send their orders in early and specify when they wish them shipped. We pride ourselves on making prompt delivery, but sometimes in our rush seasons we cannot get the orders shipped on the exact time, and we must ask our customers' indulgence for a week or so. We are keeping close check on weather conditions in every part of the country, and shipment will be made just as promptly as possible and in proper season. Often we are compelled to delay fall shipments until the stock is sufficiently mature to make it hardy. If time of shipment is left to us we can assure our customers of receiving stock in perfect condition.

DISCOUNTS

5% Discount for Cash with Order before April 1st except on strawberry plants which are net at prices listed. No discount after April 1st. Free delivery on all orders of \$50.00 or more up to 500 miles from our nursery, except on strawberry plants. Spring of 1938 only.

PLEASE READ THESE INSTRUCTIONS CAREFULLY BEFORE ORDERING

Write to us if in doubt.

HOW TO REMIT

Remittance should be made either by Post Office money order, registered letter, or by check on your bank.

SMALL ORDERS

Because of the high cost of labor, packing material, implements and land, we cannot accept orders for less than \$2.00, except on seeds.

MISTAKES

We use every precaution that it is humanly possible to avoid mistakes and believe that we are as near free from them as any Nurseryman in the United States; but in the event any of our stock should prove untrue to name under which it is labeled or sold, we will replace the original order or refund the amount paid for such stock. Further than this we are not responsible.

RATES

1 to 10 trees at the each rate; 10 to 50 at the ten rate; 50 to 300 at the 100 rate; and 300 to 600 at the 300 rate; 600 or more at the 1000 rate.

Write for prices on quantities of 1,000 or more.

All boxing, baling and packing free.

RECEIVING STOCK IN COLD WEATHER

In the event that it should turn cold after your stock has been shipped to you and there is a possibility that there is frost in the box in which the stock is shipped, put the box in a place where the temperature is above freezing—a cellar or a frost-proof building, and do not disturb for 5 to 7 days, at which time stock can be removed from the box in first-class condition. Under no circumstances should you open a box when you think there is frost in it, for if the air strikes nursery stock in frozen condition it will kill it. But if allowed to thaw out in the box, the stock will not be injured.

OUR REFERENCES

As to our responsibility, we refer you to the Salisbury National Bank, Salisbury, Md., Farmers & Merchants Bank, Salisbury, Md., and to any of our thousands of customers throughout the country that you might know or whose name you find in this catalog, and the various State Departments in the Eastern U. S.

EVERY
SHIPMENT
CERTIFIED
FREE
FROM
DISEASE

UNIVERSITY OF MARYLAND

COLLEGE PARK, MARYLAND

STATE HORTICULTURAL DEPARTMENT

CERTIFICATE OF INSPECTION

Duplicate of Number 23

Date: Sept. 21, 1937.

THIS IS TO CERTIFY, That on the 14th day of September, 1937 we examined the Nursery stock of the Bountiful Ridge Nurseries growing in their nurseries at Princess Anne, County of Somerset, State of Maryland, in accordance with the laws of Maryland, 1898, Chapter 289, Section 58, and that said nurseries and premises are apparently free, so far as can be determined by inspection, from the San Jose Scale, Peach Yellows, Pear Blight and other dangerously injurious insect pests and plant diseases.

THIS CERTIFICATE is valid until September 30, 1938, unless sooner revoked, and does not include nursery stock not grown within this State, unless such stock is previously covered by Certificate and accepted by the State Entomologist and State Pathologist.

ERNEST N. CORY, State Entomologist

C. E. TEMPLE, State Pathologist

G. S. LANGFORD, Chief Inspector

WELL
GROWN
HEALTHY
STOCK
GROWS
ONE ORDER
OF OUR
PRODUCTS
WILL
BE CON-
VINCING

In addition to the above Certificate every shipment going outside the infested area of the Japanese Beetle has a certificate of the U. S. Department of Agriculture showing the shipment is free from Japanese Beetle.



This seal on the label of your Strawberry Plants is your guarantee of true-to-name, thrifty, productive, dependable plants.



FAIRFAX

Aristocrats of the Strawberry World.

These four strawberries of superior merit, ripening from early to late, are fast gaining in popularity and do well wherever planted. We recommend them to all who wish varieties which give heavy yields of large high quality fruit to command top prices. They are truly magnificent in appearance and examples of productiveness.

Plant them this year for extra money next season.



CATSKILL



DORSETT



CHESAPEAKE

OUTSTANDING CHAMPIONS in the Field of NEW FRUITS

BLAXTAYMAN
TRADE MARK REG.

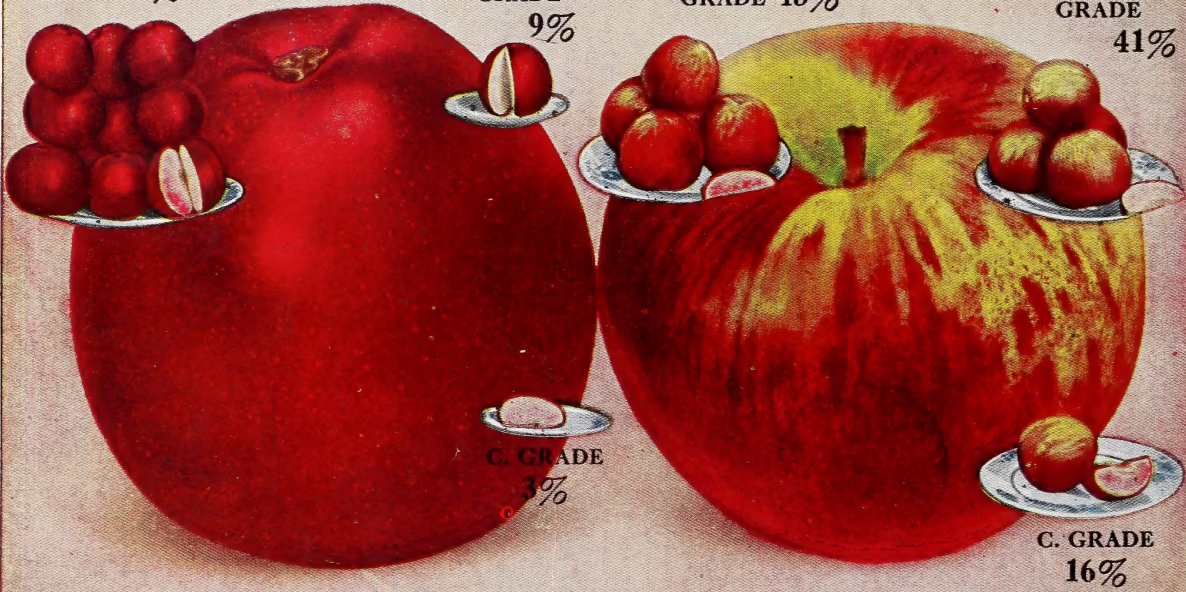
STAYMAN WINESAP

EXTRA FANCY
GRADE 88%

FANCY
GRADE
9%

EXTRA FANCY
GRADE 43%

FANCY
GRADE
41%



AVERAGE COLOR and GRADES

The BLAXTAYMAN Scores in 1937. Pronounced by fruit growers and apple buyers the Most Beautiful Staymans Type Apple ever produced. It dominates all other improved strains of the Stayman by its appealing, brilliant, cherry red color.



Early |
Color!

RICHARED
TRADE MARK REG. U.S. PAT. OFF.
The DELICIOUS *supreme*

ORDINARY
DELICIOUS

Late |
Color!

The RICHARED is the King of all improved strains of the Delicious Apple. It colors without stripes a beautiful bright red. It is the fruit growers choice. IT PAYS TO PLANT THE BEST.